

SERIES SCVO

PARTS AND OPERATER MANUAL

SHATTERTILL CULTIVATORS FOR VINEYARD AND ORCHARD

Domries Enterprises,Inc

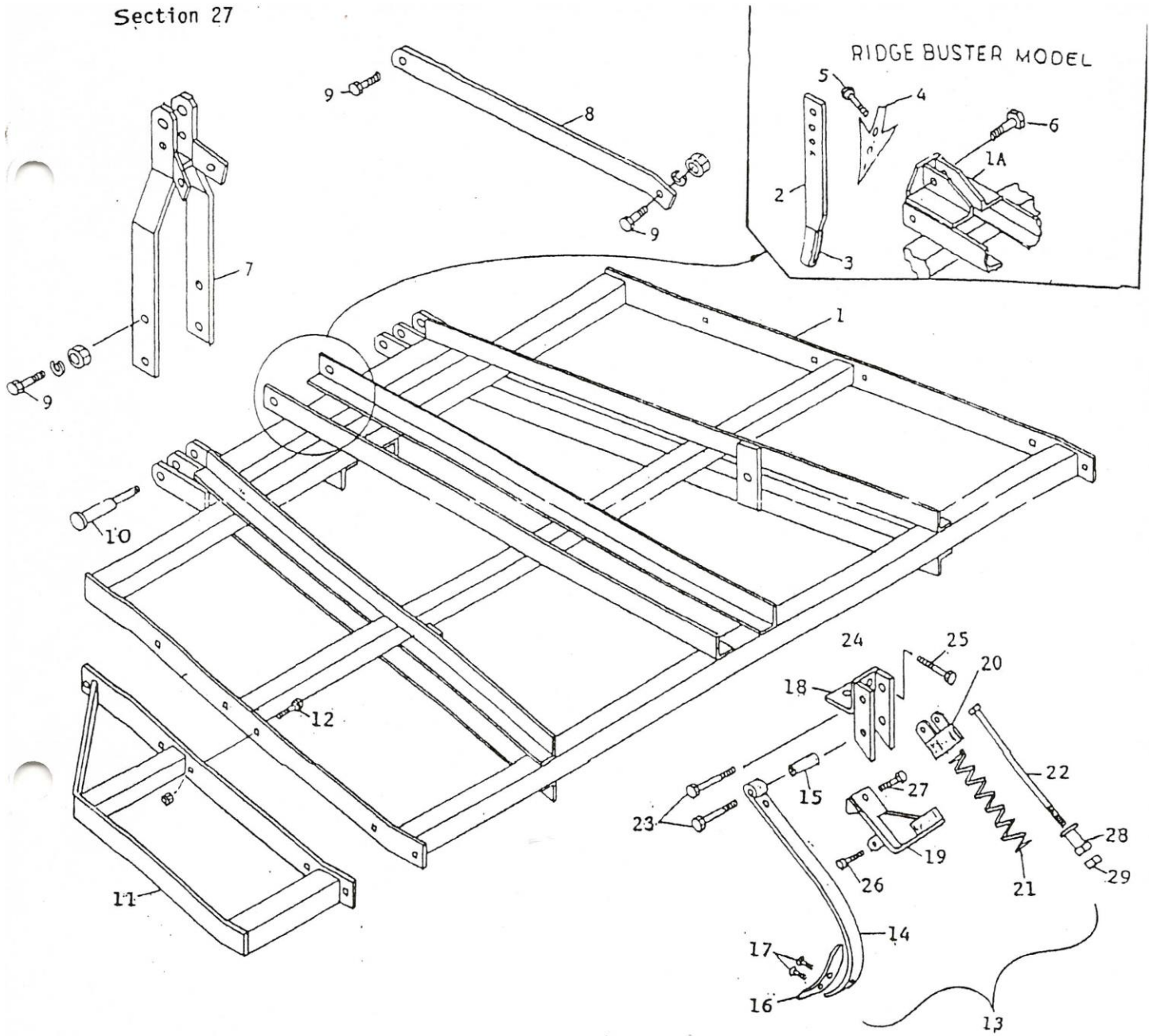
12281 Rd 29

Madera,Ca 93638

Phone # (559)673-9143 Fax # (559) 673-4110

Visit Our web-Site at www.domriesentinc.com

Section 27



Sheet SC-1200
Shattertill Cultivator
SC Series
Domries Enterprises, Inc.
12281 Road 29
Madera, California
93638

Section 27

Domries
Farm Machinery
Steel FabricationSC Series - 3pt. Lift
Shattertill Cultivator
Parts List

Ref No	Part Number	Description	Wt.
1	SCP-1	Main Frame Standard - 6 ft.	310
	SCP-2	Main Frame Standard - 7 ft.	330
	SCP-3	Main Frame Standard - 8 ft.	350
	SCP-4	Main Frame Standard - 10 ft.	370
	SCP-5	Main Frame Standard - 12 ft.	400
1a	SCP-6	Main Frame Ridge Buster Model - 6 ft.	344
	SCP-7	Main Frame Ridge Buster Model - 7 ft.	362
	SCP-8	Main Frame Ridge Buster Model - 8 ft.	380
	SCP-9	Main Frame Ridge Buster Model - 10 ft.	400
	SCP-10	Main Frame Ridge Buster Model - 12 ft.	425
2	SCP-15	Ridge Buster Shank	20
3	SCP-16	Shank "U" (Weld On)	2
4	SCP-17	Shank Shovel	8
5	SCP-18	Plow Bolt 7/16 x 3 for Shovel	.3
6	SCP-19	Mach. Bolt 5/8 x 2 3/4 for Shovel	.3
7	SCP-20	"A" Frame	33
8	SCP-21	"A" Frame Brace 2 per Mach.	16
9	SCP-22	Bolt 5/8 x 1 3/4 - "A" Frame and Brace	.3
10	XLD-29	Lift Pin Cat. # 1 and # 2	2
11	SCP-24	Extension Frame 1 ft. R.H.	36
	SCP-25	Extension Frame 1 ft. L.H.	36
	SCP-26	Extension Frame 1 1/2 ft. R.H.	45
	SCP-27	Extension Frame 1 1/2 ft. L.H.	45
12	SCP-28	Carriage Bolt 1/2 x 1 1/2 Extension Mtg.	.3
13	SCP-29	Complete Shattertill Shank Assembly	28
14	SCP-30	Spring Steel Shank Only 1/2 x 1 3/4 w/Rolled Eye	7
15	SCP-31	Bushing - For Shank Rolled Eye	.1
16	SCP-32	Point	1.4
17	SCP-33	Plow Bolt 7/16 x 1 3/4 Grade-5 2 per Point each	.3
18	SCP-34	Weldment - Shank Housing	5
19	SCP-35	Housing - Rear Spring Cup & Frame	4.5
20	SCP-36	Cup - Upper Cup w/Ears	1
21	SCP-37	Spring - 2 1/2 od x 11" Long	3.5
22	SCP-38	Bolt - Spring Retainer 1/2 x 12 1/2	1

Section 27

Domries
Farm Machinery
Steel FabricationSC Series - 3pt. Lift
Shattertill Cultivator
Parts List

Ref No	Part Number	Description	Wt.
23	SCP-39	Bolts - Shank & Cup - $\frac{1}{2}$ x $3\frac{1}{4}$, Grade-8	.3
24	SCP-40	Clamp Plate and Stud Bolt	1
25	SCP-41	Bolt - $\frac{1}{2}$ x $4\frac{1}{4}$, Grade 8, Clamp Bolt	.3
26	SCP-42	Bolt - $\frac{3}{8}$ x $2\frac{3}{4}$ - Lower Spring Cup Frame	.3
27	SCP-43	Bolt - $\frac{1}{2}$ x $1\frac{1}{2}$ - Shank to Cup Frame, Grade 5	.3
28	SCP-44	Nut - $\frac{1}{2}$ "	.3
29	SCP-45	Jam Nut - For Spring Bolt	.3



DOMRIES ENTERPRISES, INC.
12281 Road 29, Madera CA 93638 • (P) 559-673-9143 • (F) 559-673-4110

WARRANTY

Under this warranty Domries' obligation shall be limited to repairing or replacing, free of charge to the original purchaser, any defective part. Each part is subject to our assessment, and must show evidence of a manufacturing defect.

Product will be returned to Domries, routed through the dealer from whom the purchase was made. The cost of the repair or replacement shall not be higher than the purchase price of the product, excluding tax, shipping, and installation charges.

A claim for warranty must be made with a Domries Warranty Form with a work order number.

An authorized work order number is **REQUIRED** prior to any field/repair work to be done by Domries.

RETURN GOODS

Domries reserves the right of requiring the prepaid return of any parts claimed to be defective. However, **NO** parts shall be returned **without** Domries warranty form with a work order number. Goods shall be returned to such location as shall be designated by Domries.

Domries will at its discretion, either repair, replace, or freight outbound product from Domries factory. Domries will inspect all parts for defectiveness in materials and/or workmanship. Wear and tear that is determined to be defective, are subject to an adjustment based upon useful life.

REPAIR

Domries will not accept any charges other than its direct Dealer shop labor costs and parts required to repair such parts and/or workmanship at the Dealers place of business. The **WARRANTY** specifically excludes any charges for delivery, transportation, and/or shipping costs.

If the dealer is requested by the customer to travel or haul the machine to its shop or repair shop for the purpose of performing a warranty obligation or free inspection, it would be for the customer's convenience, and the cost of such a trip is to be paid by the customer. Any arrangement whereby the Dealer agrees to absorb all or a part of the cost is to be made **SOLELY** between the Dealer and the Customer (to be considered a courtesy to the customer by their Dealer).

LIMITED WARRANTY

Outside purchased equipment and accessories (not of Domries manufacture) are warranted only to the extent of the original manufacturer's warranty to Domries. Examples of limited items include, Hydraulic cylinders and hoses, Bearings, Disc Blades, Wheels, Tires, Tubes, and Seals.

NO WARRANTY

1. New product that has been subjected to operation in excess of recommended capacities, misused, negligence, lack of maintenance, an accident or have been ***altered/repared in any manner not authorized by Domries.***
2. Sharp turns while machine/cutting parts are in the ground void warranty, with the exception of a drag disc.

Domries shall in no event be responsible for any delay or any other consequential or indirect damage in connection with fulfilling any obligation under this WARRANTY.

Domries reserves the right to make change at any time in designs, materials and/or specifications of its product without becoming liable or obligated in any way to make similar changes in previously manufactured products.

This ***WARRANTY IS IN LIEU OF ALL OTHER WARRANTIES COVERING DOMRIES PRODUCTS*** and no other warranties expressed or implied are made or authorized by Domries Enterprises, Inc.

DEALER/SALESMAN: _____ **DATE:** _____

DOMRIES REP.: _____ **DATE:** _____