

SERIES OFX STUBBLE DISC

**PARTS
&
OPERATOR
MANUAL**

**OFX
SERIES
CUTTING WIDTHS
11'6"
TO
20'2"**

Domries Enterprises, Inc.

12281 Road 29

Madera, California 93638

Phone (559) 673-9143 Fax (559) 673-4110

Visit our Web-Site at

DOMRIES ENTERPRISES, INC.

12281 Road 29

Madera, California 93638

Phone: (559) 673-9143 • Fax (559) 673-4110

Visit our NEW Web-site at www.domriesentinc.com

IMPORTANT! PLEASE READ!

TO OUR CUSTOMER – USER’S RESPONSIBILITY- WARRANTY

TO OUR CUSTOMER

The following pages and illustrations are printed to help supply you with the knowledge to better operate and service your new DOMRIES equipment.

We are proud to have you as a customer and feel you will be proud to be a DOMRIES owner.

Any piece of equipment needs and must have a certain amount of service and maintenance to keep it in top running condition. We have attempted to cover all the adjustments required to fit most conditions; however, there may be times special care must be taken to fit a condition.

Study this operator’s manual carefully and become acquainted with all the adjustments and operating procedures before attempting to operate your new equipment. Remember, it is a machine and has been designed and tested to do an efficient job in most operating conditions and will perform in relation to the service it receives.

If special attention is required for some conditions, ask your DOMRIES dealer; his Parts and Service Organization will be glad to help and answer any question on operation and service of your new machine.

ATTENTION! BECOME ALERT!

YOUR SAFETY IS INVOLVED

This symbol is used to call your attention to safety precautions that should be followed by the operator to avoid accidents. When you see this symbol – Heed Its Warning.

USER’S RESPONSIBILITY

It is the responsibility of the user to read the Operator’s Manual and understand the safe and correct operating procedures as pertains to the operation of the product, and to lubricate and maintain the product according to the maintenance schedule in the Operator’s Manual.

The user is responsible for inspecting his machine and for having parts repaired or replaced when continued use of the product would cause damage or excessive wear to the other parts. It is the user’s responsibility to deliver his machine to a DOMRIES dealer, for service or replacement of defective parts which are covered by the standard warranty. When requesting warranty service, you present your copy of delivery record.

MODEL# _____

SERIAL# _____



ATTENTION! BECOME ALERT!

YOUR SAFETY IS INVOLVED!

This Symbol is used to call your attention to safety precautions. That should be followed by the operator to avoid accidents. When you see this – Heed Its Warning.

Many hours of lost time and much suffering is caused by the failure to practice simple safety rules.

1. **READ** this manual carefully to acquaint your – self with the Disk Harrow. Opening unfamiliar equipment can cause accidents.
2. **Lower Implement** if possible, when adjusting maintenance work; otherwise **BLOCKS IT SECURELY** at a workable height.
3. **When Implement** and tractor is parked always lower disk to the ground and place a **FLAG OR OTHER WARNING DEVICE** on each corner as someone could run or bump into the implement.
4. Implement should be **DETACHED ONLY** in an area where Children **DO NOT PLAY**.
5. **DO NOT** wear loose fitting clothing that could catch on various parts.
6. Machinery should be **OPERATED ONLY** by those who are **RESPONSIBLE AND DELEGATED** to do so.
7. **ONLY ONE PERSON** – the operator – should be permitted on the tractor when implement is in operation, he should be thoroughly familiar with tractor and implement.
8. **MAKE CERTAIN** that everyone is clear before starting tractor and implement combination.
9. **BEFORE WORKING** under the any hydraulically controlled unit **MAKE SURE** it is **SECURELY BLOCKED**.
10. The **RATE OF SPEED** on hillsides or curves should be regulated so there is no danger of tipping.
11. **DO NOT** drive too close to the edge of a ditch or creek.
12. **REDUCE SPEED** when transporting unit to avoid bouncing and momentary loss of steer ability.
13. **MAKE CERTAIN** tractor is equipped with sufficient front-end weight to counter-balance the plow weight and maintain stability of front of tractor
14. **DO NOT** attempt to operate tractor and implement unless you are in the driver seat.
15. **ALWAYS** place transmission in **PARK or NEUTRAL, LOCK BRAKES, STOP ENGINE AND REMOVE START KEY** before dismounting from the tractor.
16. **NEVER** stand between tractor and disc when hitching.
17. **PROVIDE** a first aid kit. Treat all scratches, cuts, etc. with proper antiseptic immediately.
18. If **DECALS** become damaged or come off, they should be replaced immediately.
19. **REMEMBER** that safe operation is no accident.

ON HIGHWAY OPERATION

1. Use the **SLOW-MOVING** vehicle emblem in daytime and approved warning lights at night, or during other periods of poor visibility, to prevent highway accidents.
2. **COMPLY** with Local highway regulation concerning moving machinery on highways.
3. **MAINTAIN** complete control of machines at all times when traveling on the highway
4. Due to the width of implement, **USE EXTRA CAUTION** on highways, far lanes and when approaching gates

**OFX
SERIES**



**WHEEL TYPE
OFFSET DISC HARROW**

STUBBLE DISC



**CUTTING WIDTH
11'6"
TO
20'5"**



DOMRIES ENTERPRISES, INC

12281 Road 29

Madera, California 93638

Office (559) 673-9143 Fax (559) 673-4110

Visit our website @ www.domries.com



OFX-SPECIFICATIONS

MODEL	WIDTH OF CUT	NO. OF BLADES	NO. OF BEARINGS	WORKING WEIGHTS			APPROX. DRAWBAR POWER			TRANS. CUBES	
				MACHINE-PER	BLADES-PER FT. OF CUT		4 MPH	6 MPH	LBS. PULL	C/F	C/M
OFX-2022	11'6"	20	8	12270	593	1067	118	178	11040	289	8.1
OFX-2222	12'8"	22	8	13329	601	1045	130	1966	11620	289	8.2
OFX-2422	13'9"	24	8	13844	577	1007	141	213	12680	327	9.3
OFX-2622	14'10"	26	10	14767	569	996	152	229	13740	366	10.4
OFX-2822	16'6"	28	12	15504	554	969	164	247	14800	404	11.4
OFX-3022	17'1"	30	12	15915	531	932	175	264	15850	443	12.5
OFX-3222	18'2"	32	12	16446	514	905	186	281	16900	481	13.6
OFX-3422	19'3"	34	12	17008	500	882	198	298	18000	527	14.9
OFX-3622	20'5"	36	13	18047	501	884	210	316	19020	573	16.2

* COMPUTED WITH 32 X 32 NOTCHED DISC BLADES. BLADE CLEANERS. HYD CYL, HOSES AND TIRES

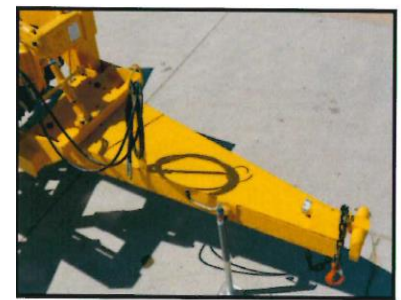
** DRAWBAR POWER HAS BEEN COMOUTED TO TIT AN AVERAGE IN THE SPECTRUM OF SOIL CONDITIONS, OPERATING SPEED, CUTTING ANGLE AND WEIGHT ADDED TO MACHINE.



HYD. LIFT SYSTEM.
DEPTH CONTROL RISE AND LEVELING UNIT



DEPTH CONTROL
THREADED CRANK GIVES DEPTH OF CUT SETTINGS



HITCH
ALLOWS SHORTER TURNS BEHIND DUAL
WHEEL AND TRACK TYPE TRACTORS



TONGUE
SINGLE LIP IS STANDARD,
DOUBLE LIP AND TONGUE PIVOT
DROP OPTIONAL.

OPTIONS

- WEAR PLATES
- BLADE CLEANERS
- BLADE SIZE AND THICKNESSES
- BOLT ON FURROW FILLER
- HOSE KIT
- TRUNION MOUNTED TAPERED ROLLER BEARING



GANG BEAMS
THREE 4" X 6" HEAVY WALL TUBE

DOMRIES ENTERPRISES, INC

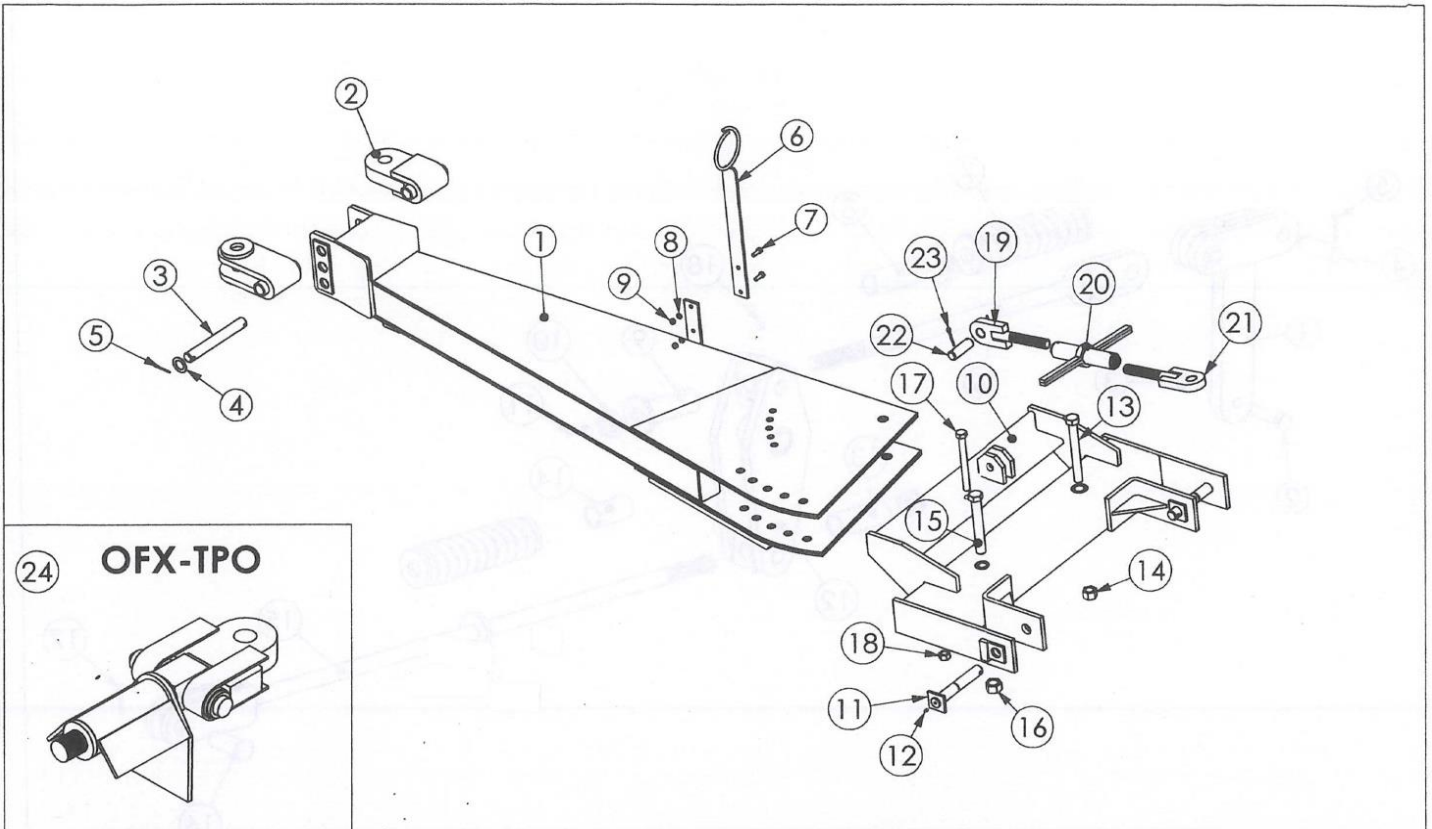
12281 Road 29

Madera, California 93638

Office (559) 673-9143 Fax (559) 673-4110

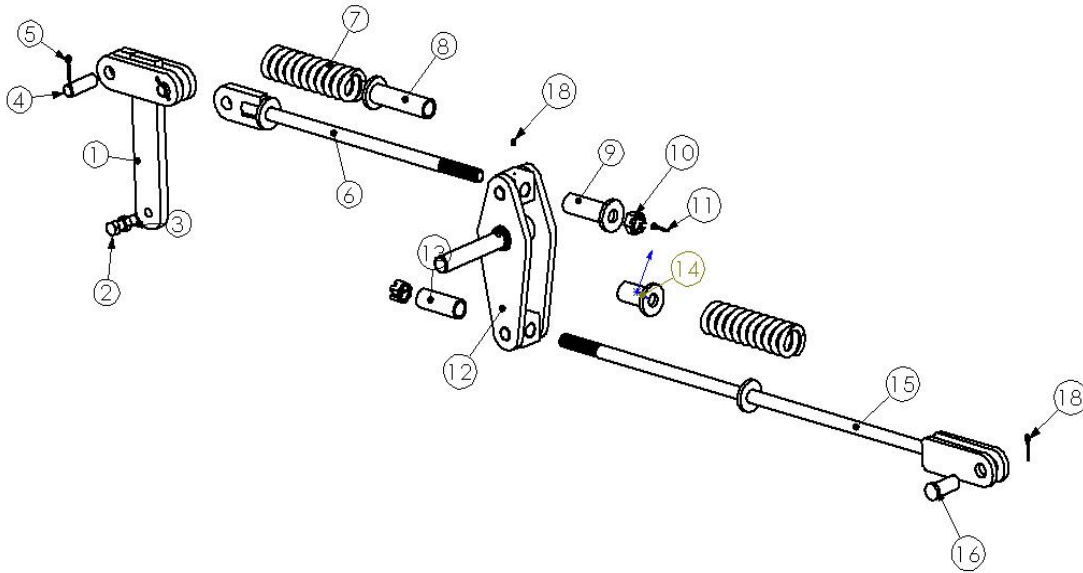
Visit our website @ www.domries.com





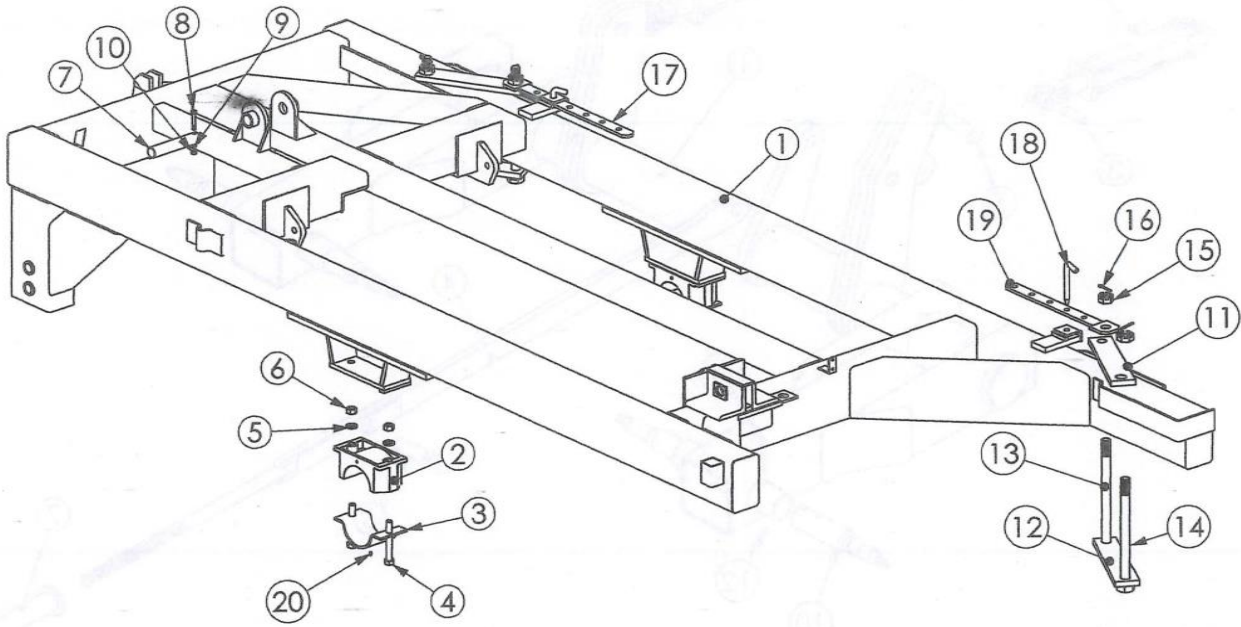
HITCH, DRAW BAR ASSEMBLY

REF #	PART #	DESCRIPTION	WT/LB.
1	FX-502	HITCH DRAW BAR	725.0
2	FX-503	TONGUE - SINGLE	61.5
	FX503C	TONGUE - CLEVIS	60.0
3	FX-596	PIN - TONGUE	7.4
4	FW158	FLAT - WASHER - 1 5/8" nom.	0.4
5	CP126	COTTER PIN - 1/2" X 6" LG.	0.7
6	FX-582	HOSE GUIDE	10.0
7	CS12114-5	BOLT - 1/2" NC. X 1 1/4" LG. GR. 5	0.1
8	LW12	LOCK WASHER - 1/2" nom.	0.1
9	N12	NUT - 1/2" NC.	0.1
10	FX-501	CROSS MEMBER HITCH	395.0
11	FX-543	PIN - HITCH	9.5
12	7000	GREASE ZERK	0.1
13	CS11210-5	BOLT - 1 1/2" NC. X 10" LG. GR. 5	4.5
14	N112	NUT - 1 1/2" NC.	0.9
15	CS11411-8	BOLT - 1 1/4" NC. X 11" LG. GR. 8	6.5
16	N114	NUT - 1 1/4" NC.	0.6
17	CS110-8	BOLT - 1" NC. X 10" LG. GR. 8	2.5
18	N1	NUT - 1" NC.	0.1
19	FX-504	TURNBUCKLE BOLT - R.H. THRD.	12.3
20	FX-505	BODY - TURNBUCKLE	14.2
21	FX-506	TURNBUCKLE BOLT - L.H. THRD.	12.3
22	FX-595	PIN - ROCKER	2.5
23	CP156212	COTTER PIN - 5/16" X 2 1/2" LG.	0.1
24	OFX-TPO	TONGUE PIVOT (OPTIONAL)	52.0



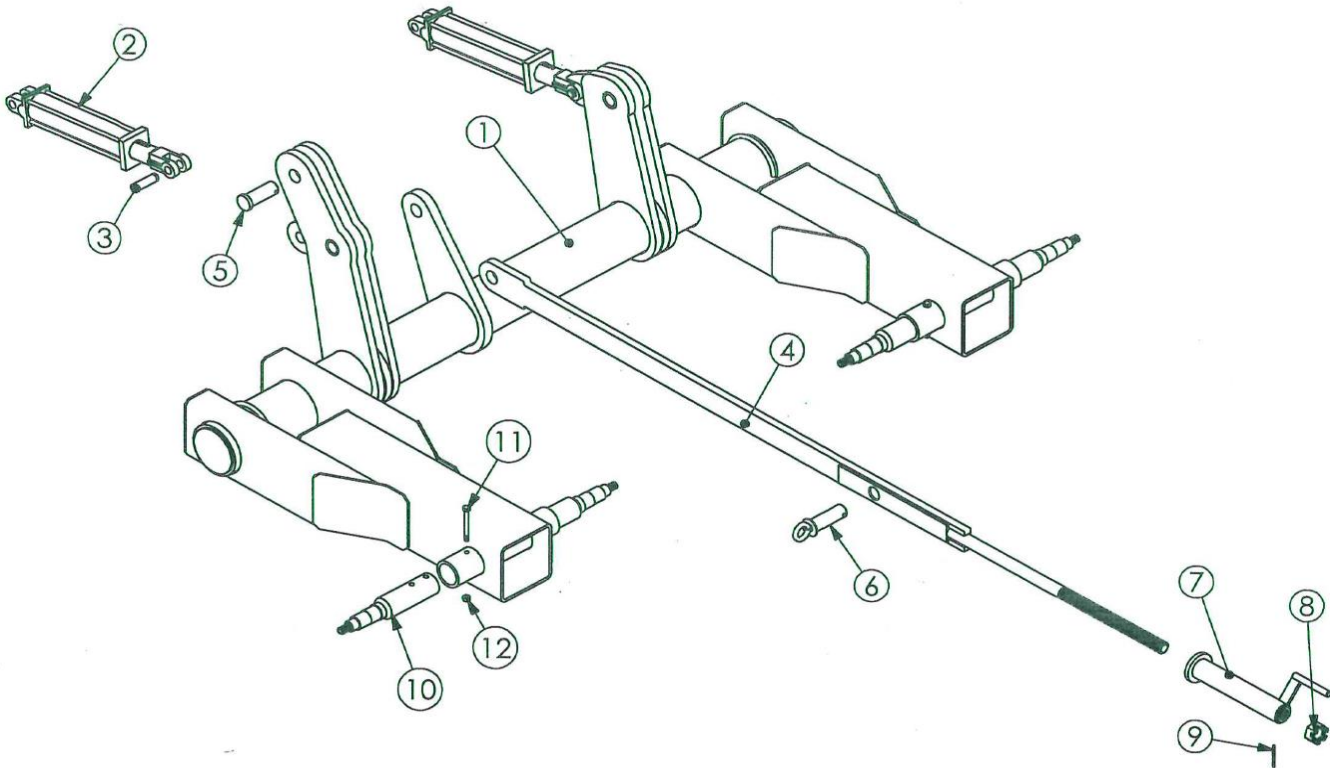
LEVELING ASSEMBLY

REF #	PART #	DESCRIPTION	WT/LB.
1	FX-507	LEVER HAMMER	55.0
2	CS1312-5	BOLT - 1" NC. X 3 1/2" LG. GR. 5	N/A
3	LN1	LOCK NUT - 1"	N/A
4	FX-595	PIN - ROCKER	2.5
5	CP516212	COTTER PIN - 5/16" X 2 1/2" LG.	0.1
6	FX-508	LEVELING ROD - FRONT	27.5
7	FX-509	SPRING	14.2
8	FX-510-L	FLANGE TUBE - LONG	6.7
9	FX-510-S	FLANGE TUBE - SHORT	3.7
10	SN112	SLOTTED NUT - 1 1/2"	N/A
11	CP14212	COTTER PIN - 1/4" X 2 1/2" LG.	0.1
12	FX-513	LEVER WELDMENT - SWIVEL	87.7
13	FX-515-L	SPACER TUBE - LONG	3.3
14	FX-515-S	SPACER TUBE - SHORT	3"
15	FX-516	LEVELING ROD - REAR	52.1
16	FX-602	PIN - LEVELING ROD - REAR	2.5
17	CP516212	COTTER PIN - 5/16" X 2 1/2" LG.	0.1
18	1641	GREASE ZERK	N/A
19	FX-591	PIN	



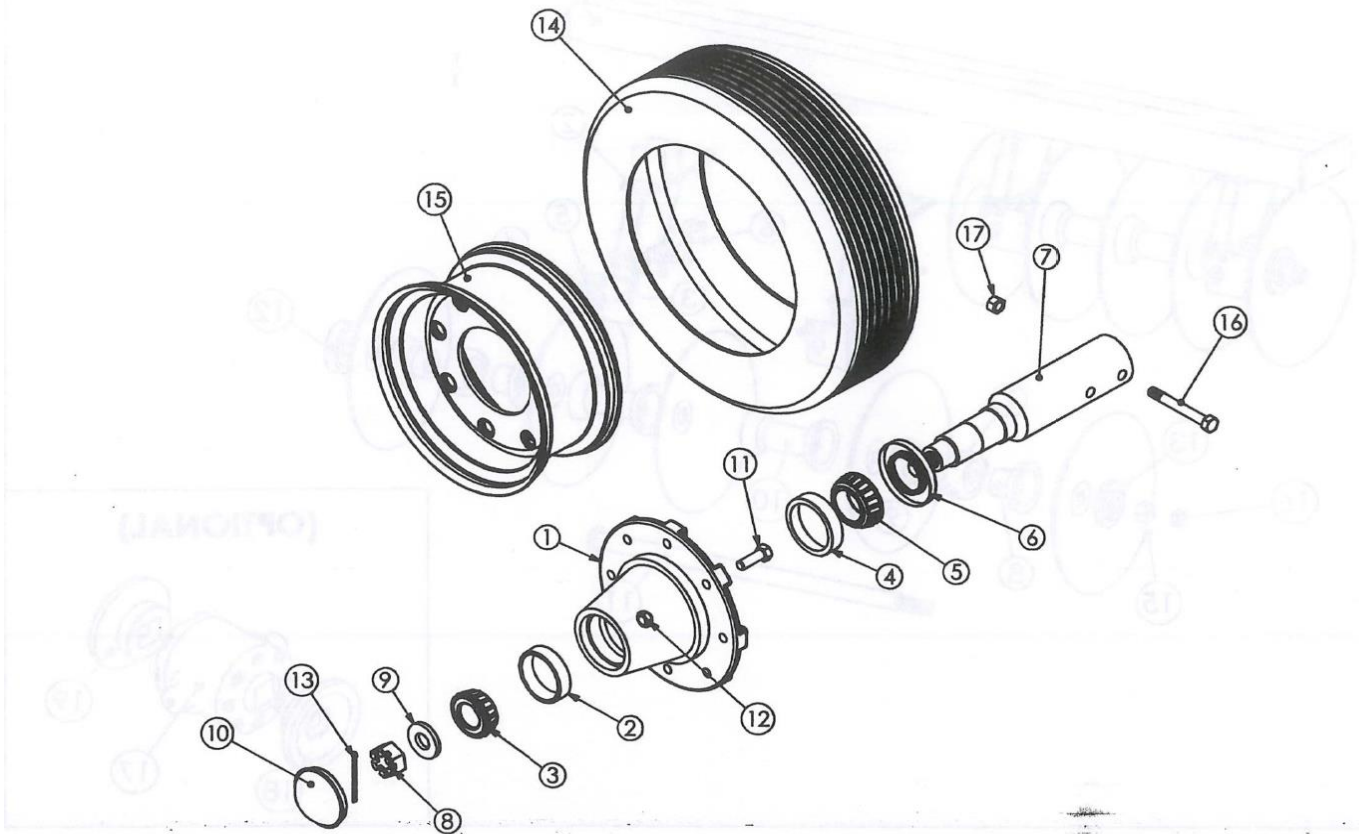
MAIN FRAME

REF #	PART #	DESCRIPTION	WT/LB.
1	FX-514	MAIN FRAME	3,561.0
2	FX-548	BOLCK - AXLE MTG.	58.9
3	FX-549	CAP - AXLE	13.5
4	CS18-5	BOLT - 1" NC. X 8" LG. GR. 5	2.5
5	LW1	LOCK WASHER - 1"	0.03
6	N1	NUT - 1"	0.08
7	FX-591	PIN - ROCKER	9.4
8	CS12314-5	BOLT - 1/2" NC. X 3 1/4" LG. GR. 5	0.3
9	LW12	LOCK WASHER - 1/2"	0.1
10	N12	NUT - 1/2"	0.1
11	FX-544	TOP STRAP TO GANG	20.7
12	FX-544B	BOTTOM STRAP TO GANG	21.1
13	FX-550	BOLT - GANG, LONG (22" OA.)	11.3
14	FX-551	BOLT - GANG, SHORT (21 1/2" OA.)	10.3
15	SN112	SLOTTED NUT - 1 1/2" NC., HEX	0.8
16	CP14212	COTTER PIN - 1/4" X 2 1/2" LG.	0.01
17	FX-545	SET BAR - FRONT	N/A
18	FX-547	J - PIN	1.7
19	FX-546	SET BAR - REAR	N/A
20	ON-1613B	GREASE ZERK	N/A



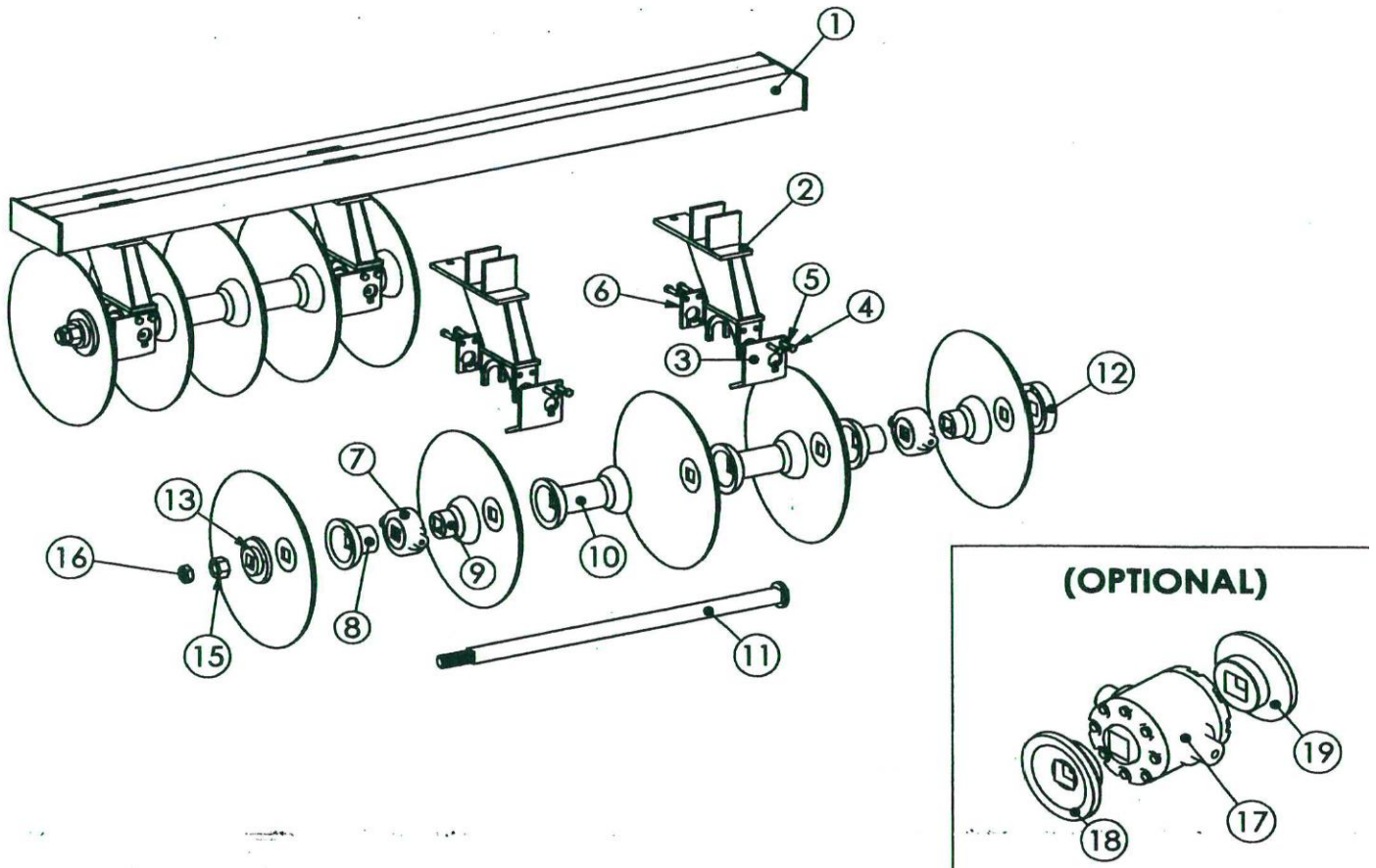
OFX - AXLE

REF #	PART #	DESCRIPTION	WT/LB.
1	FX-517	AXLE (OFX)	752.0
2	ON-53	HYD. CYL. 4" BORE X 16" STR.	57.0
3	ON-55	PIN - W/RETAINER - HYD. CLY.	0.9
4	FX-540	ROD - DEPTH CONTROL	93.5
5	FX-597	PIN - DEPTH CONTROL	2.5
6	FX-593	PIN - TRANSPORT, OFX	3.0
7	FX-541	CRANK - DEPTH CONTROL	7.5
8	SN112	SLOTTED NUT - 1 1/2"	0.8
9	CP14212	COTTER PIN - 1/4" X 2 1/2" LG.	N/A
10	FX-518	SPINDLE - SLIP IN (OFX)	16.4
11	CS12412-5	BOLT - 1/2" NC. X 4 1/2" LG. GR. 5	0.4
12	LN12	LOCK NUT - 1/2" NC.	0.1



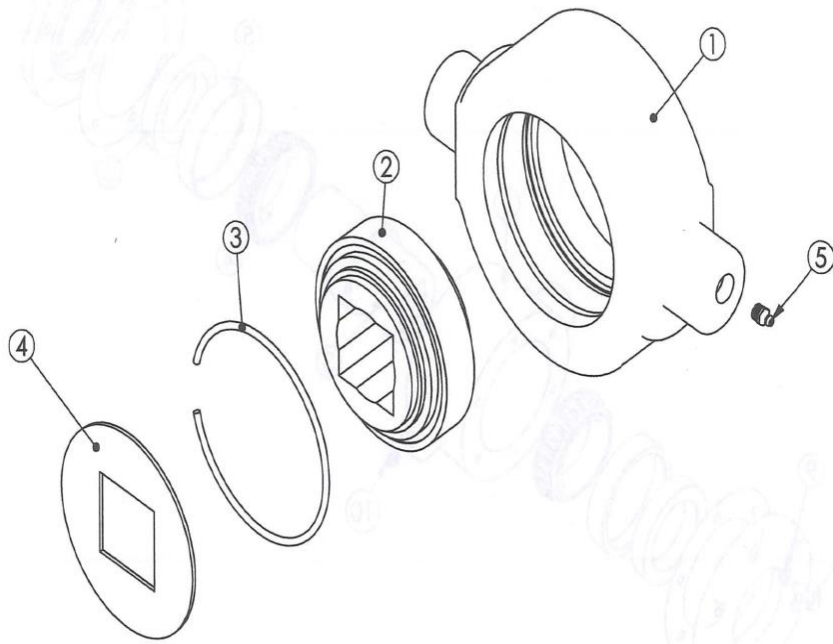
SPINDLE ASSEMBLY

REF #	PART #	DESCRIPTION	WT/LB.
1	RPO-163	HUB W/ CUPS	10.0
2	RPO-147	BEARING CUP - OUTER	0.1
3	RPO-148	BEARING CONE - OUTER	0.3
4	RPO-145	BEARING CUP - INNER	0.2
5	RPO-146	BEARING CONE - INNER	0.4
6	RPO-144	OUTER SEAL	0.1
7	FX-518	SLIP IN SPINDLE	9.0
8	SN78F	SLOTTED NUT	0.1
9	RPO-159	SPINDLE WASHER	0.01
10	RPO-151	DUST CAP	0.2
11	RPO-168	LUG BOLT - (1/2" NG X 1" LG.)	0.1
12	N916-F	NUT - 9/16"	N/A
13	CP3162	COTTER PIN 3/16" X 2" LG.	N/A
14	FX-534	TIRE - 7.60-15, RIB 6 PLY.	24.0
15	FX-533	WHEEL 16 X 10, 8 (9/16)	40.0
16	CS12412-5	BOLT - 1/2" NC. X 4 1/2" GR.	N/A
17	LN-12	LOCK NUT - 1/2"	N/A



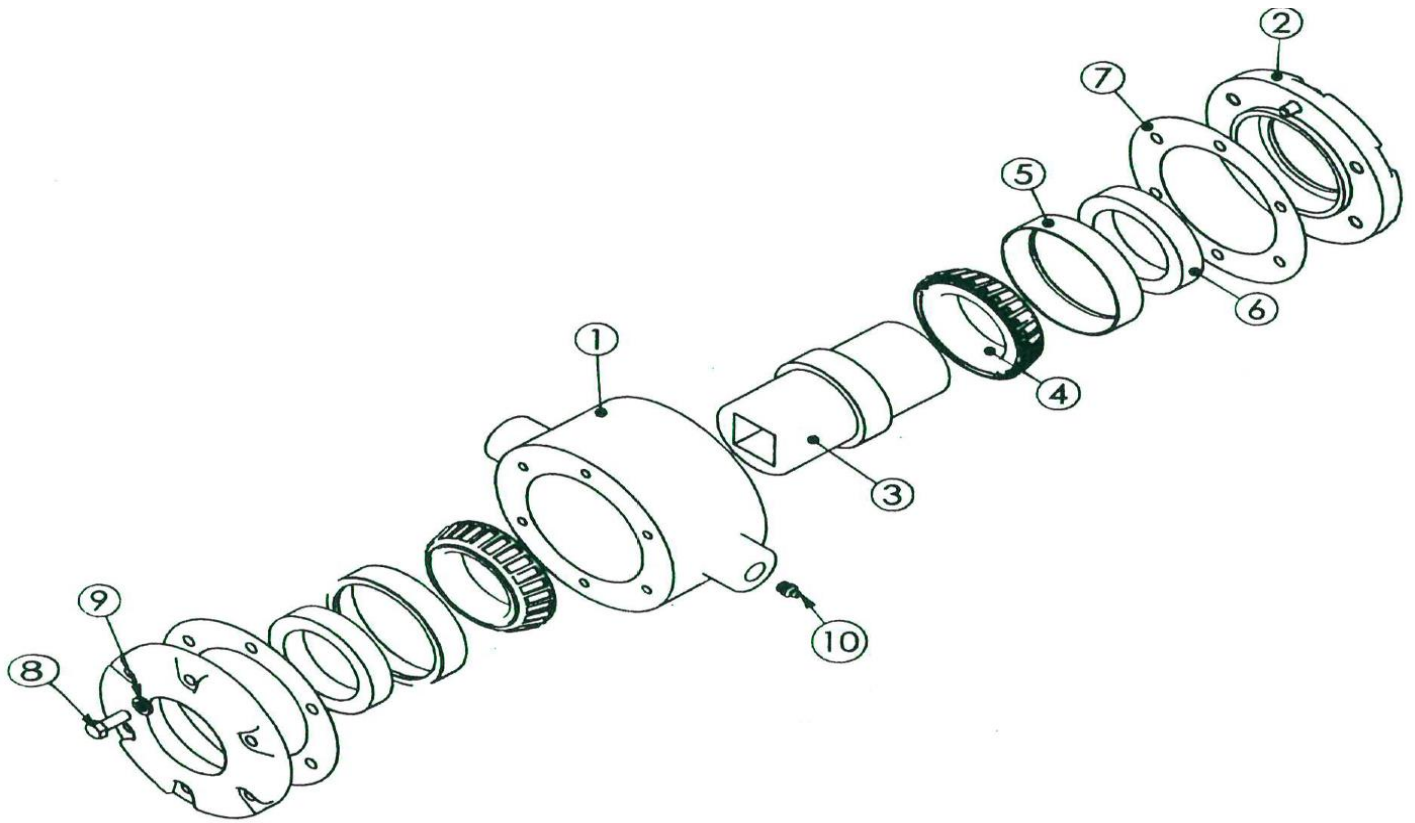
GANG ASSEMBLY

REF #	PART #	DESCRIPTION	WT/LB.
1	OFX GANG FRAME	STATE WHICH MODEL OF DISC	N/A
2	FX-568	MTG. BRKT. - FRONT RISER	105.0
	FX-569	MTG. BRKT. - REAR RISER	105.0
3	FX-575-F	BRG. STRAP W/GUARD - FRONT GANG	N/A
	FX-575-R	BRG. STRAP W/GUARD - REAR GANG	N/A
4	CS34234-5	BOLT - 3/4" NC. X 2 3/4" LG. GR. 5	N/A
5	LW34	LOCK WASHER - 3/4" NOM.	N/A
6	FX-576	BRG. STRAP - SHORT	N/A
7	FX-572A-KIT	BEARING ASSY. - 2 1/4" SQ.	N/A
8	FX-577	HALF SPOOL - CCV, 2 1/4" SQ.	N/A
9	FX-578	HALF SPOOL - CVX, 2 1/4" SQ.	N/A
10	FX-579	SPACER SPOOL - 2 1/4" SQ.	N/A
11	GANG ROD - 2 1/4"	STATE WHICH MODEL OF DISC	N/A
12	FX-451	EXT. WASHER - CCV, 2 1/4" SQ.	N/A
13	FX-565	END WASHER - CVX, 2 1/4" SQ.	N/A
14	FX-581	END WASHER - CCV, 2 1/4" SQ.	N/A
15	N214	NUT - 2 1/4"	N/A
16	JN214	JAM NUT - 2 1/4"	N/A
17	OFX-572-KIT	TRUNNION MTD. TAPERED ROLLER BRG. (OPTIONAL)	N/A
18	FX-612	HALF SPOOL - CCV, 2 1/4" SQ.	N/A
19	FX-613	HALF SPOOL - CVX, 2 1/4" SQ.	N/A



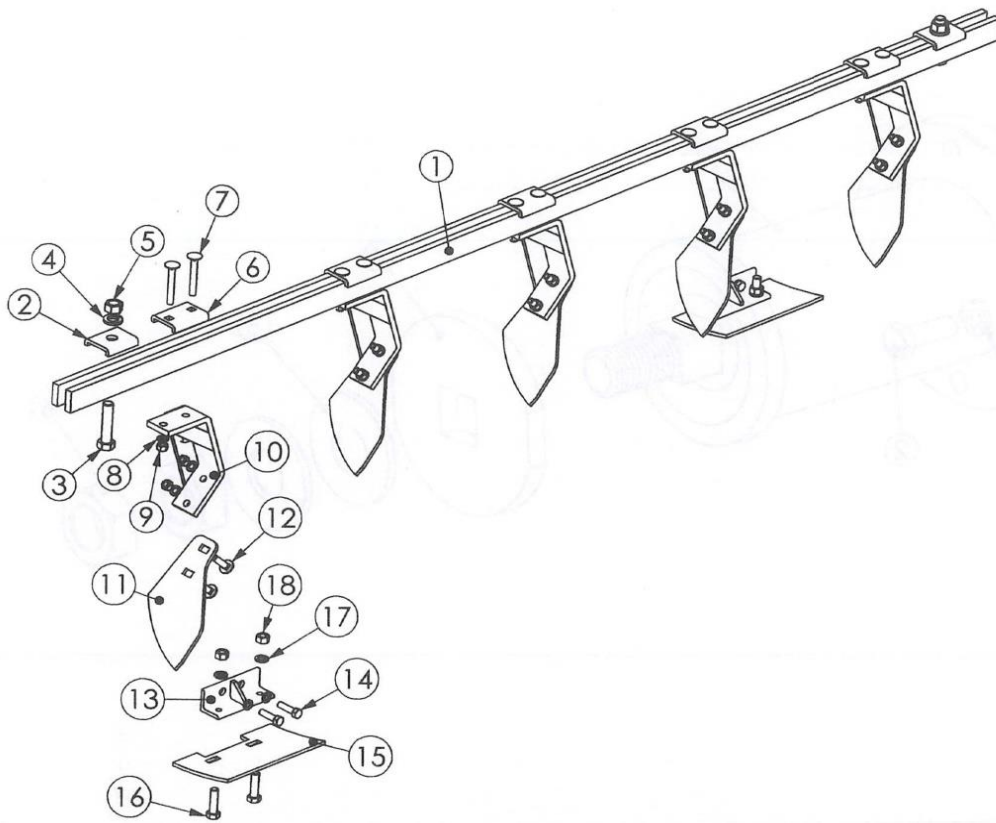
FX-572A-KIT

REF #	PART #	DESCRIPTION	WT/LB.
1	RPO-82	BRG. HOUSING - 2 1/4" SQ.	N/A
2	RPO-111D	BEARING - GNG, 2 1/4" SQ. (DOMESTIC)	N/A
	RPO-111I	BEARING - GNG, 2 1/4" SQ. (IMPORT)	N/A
3	RPO-110	RETAINING RING	N/A
4	RPT-542	BRG. SHIELD - LRG. 2 1/4"	N/A
5	7000	GREASE ZERK	N/A



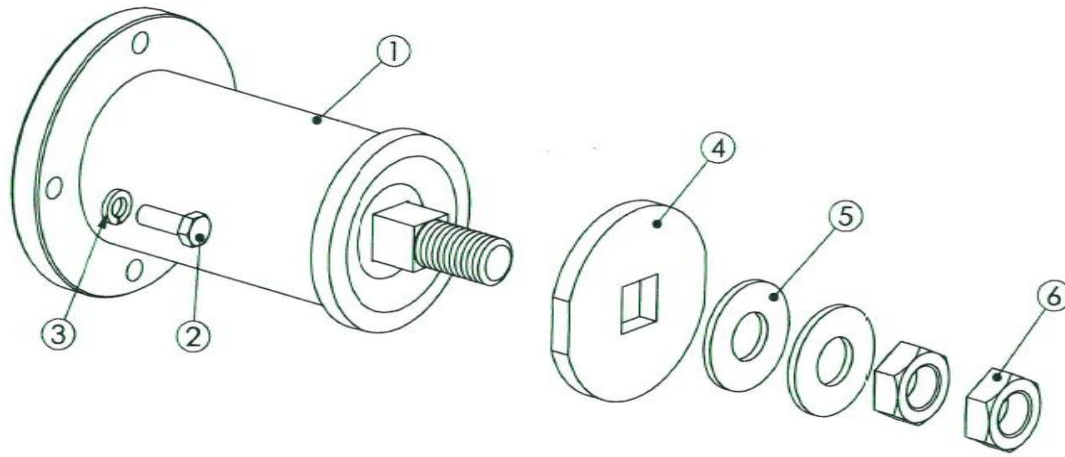
TAPERED ROLLER BEARING ASSEMBLY

REF #	PART #	DESCRIPTION	WT/LB.
1	FX-TR-BRG-02	BEARING HOUSING TAPER ROLLER	N/A
2	FX-TR-BRG-03	END CAP	8.4
3	FX-TR-BRG-01	INSERT - 2 1/4" SQ. 9" LG.	12.5
4	FX-645	BRG. CONE	3.5
5	FX-644	BRG. CUP	2.3
6	FX-646	SEAL	0.8
7	FX-TR-BRG-07	GASKIT	0.1
8	CS12134-5	BOLT - 1/2" NC. X 1 3/4" LG. GR. 5	N/A
9	LW12	LOCK WASHER - 1/2"	N/A
10	7000	GREASE ZERK	0.1



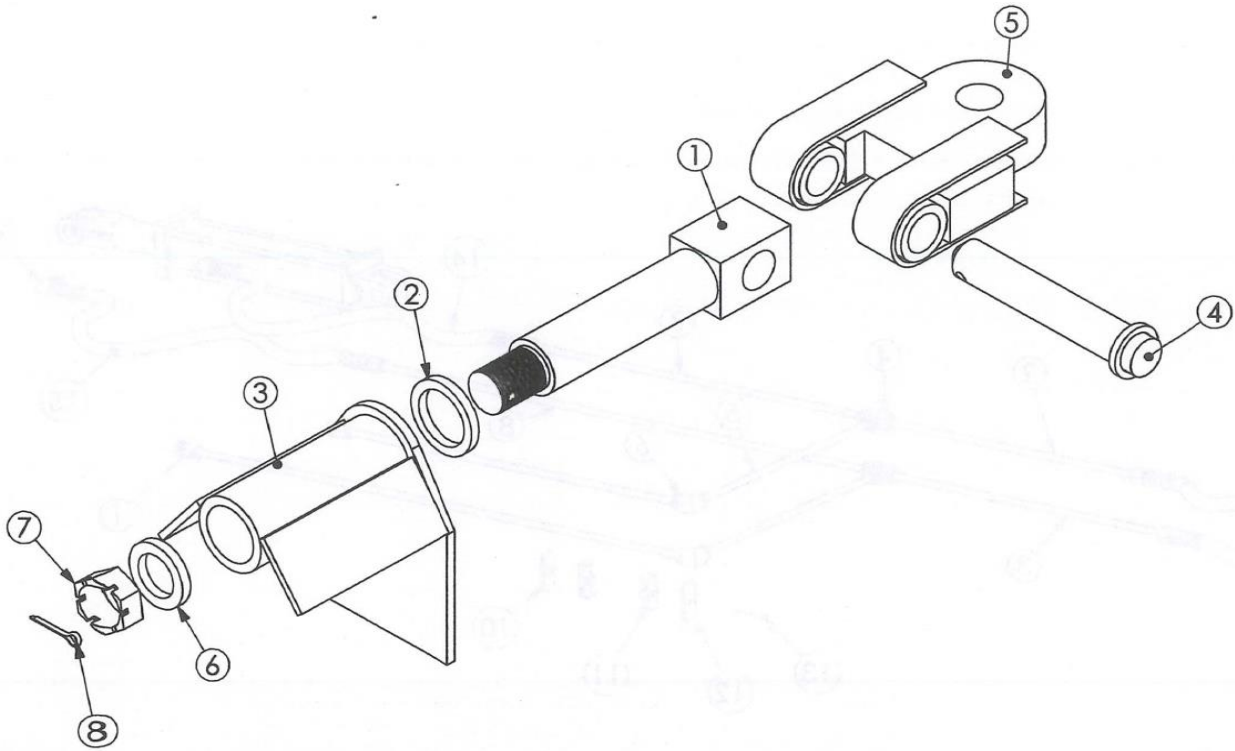
CLEANER ASSEMBLY

REF #	PART #	DESCRIPTION	WT/LB.
1	OFX	CLEANER BAR (INDICATE MODEL OF DISC)	N/A
2	FX-307	CAP - CLEANER BAR	N/A
3	CS1412-5	BOLT - 1" NC. X 4 1/2" LG. GR. 5	N/A
4	LW1	LOCK WASHER - 1"	N/A
5	N1	NUT - 1"	N/A
6	FX-305	CAP - CLEANER ARM	N/A
7	CB58412	CARRIAGE BOLT - 5/8" NC. X 4 1/2" LG. GR. 5	N/A
8	LW58	LOCK WASHER - 5/8"	N/A
9	N58	NUT - 5/8"	N/A
10	FX-300-F	CLEANER ARM - FRONT	N/A
	FX-300-R	CLEANER ARM - REAR	N/A
11	RPO-130	BLADE - SCRAPER	N/A
12	CB582-5	CARRIAGE BOLT - 5/8" NC. X 2" LG.	N/A
13	FXSL-229	HOLDER, THRASH PLATE	N/A
14	CS58214	BOLT - 5/8" NC. X 2 1/4" LG.	N/A
15	FX-592	THRASH PLATE, 14" SPACING	N/A
16	CS34234-5	BOLT - 3/4" NC. X 2 3/4" LG. GR. 5	N/A
17	LW34	LOCK WASHER - 3/4"	N/A
18	N34	NUT - 3/4"	N/A



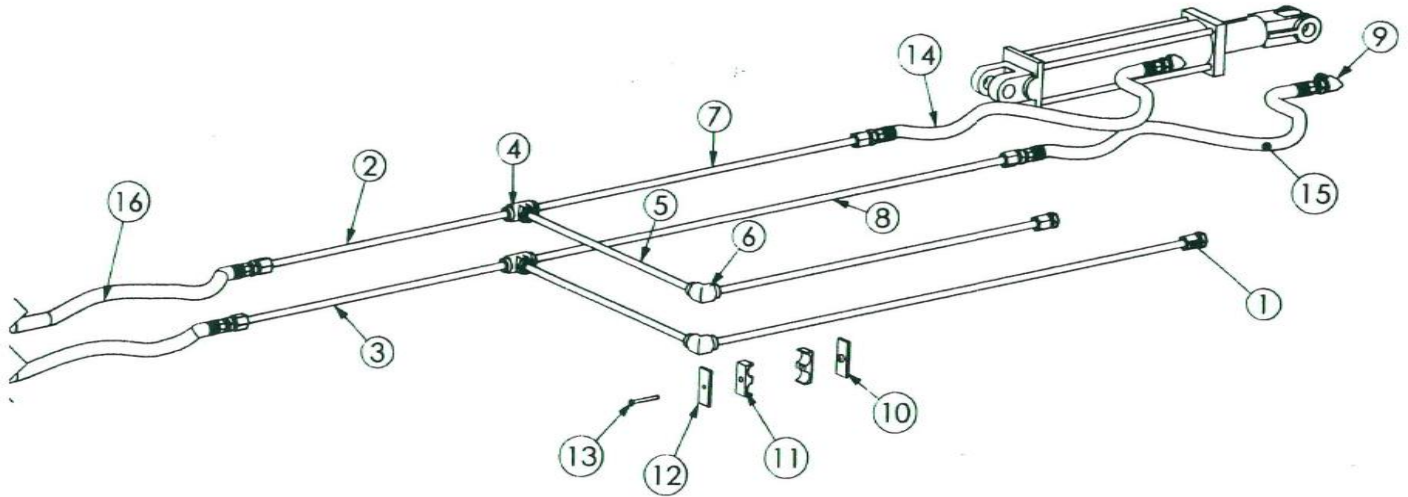
EXT. SPOOL KIT

REF #	PART #	DESCRIPTION	WT/LB.
1	RPO-447	EXTENSION SPOOL	N/A
2	CS58134-5	BOLT - 5/8" NC. X 1 3/4" LG.	N/A
3	LW58	LOCK WASHER - 5/8"	N/A
4	RPO-445	FLANGE - EXT. SPOOL	N/A
5	FW112	FLAT WASHHER - 1 1/2"	N/A
6	JN112	JAM NUT - 1 1/2"	N/A



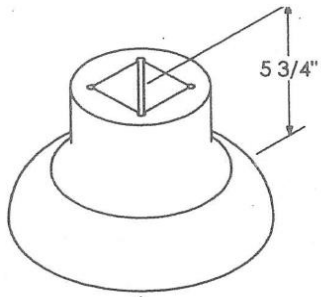
FX-TPO ASSEMBLY

REF #	PART #	DESCRIPTION	WT/LB.
1	FX-TPO-01	SWIVEL HITCH PIVOT PIN	36.0
2	FX-TPO-02	WASHER, TRUST-TOP	1.2
3	FX-TPO-03	BUSHING - WELD ON	9.25
4	FX-TPO-04	PIN - 2" DIA.	12.0
5	FX-TPO-05	TONGUE - SINGLE	61.5
6	FX-TPO-06	WASHER - THREADS	1.2
7	SN214	SLOTTED NUT - 2 1/4"	3.0
8	CP383	COTTER PIN - 3/8" X 3" LG.	N/A

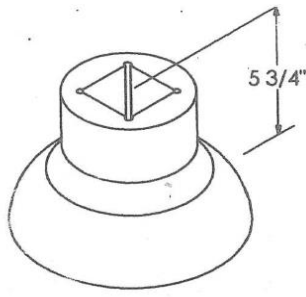


PIPES & FITTING ASSEMBLY

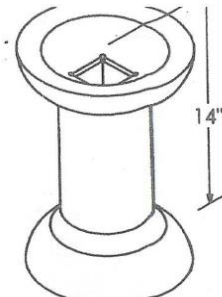
REF #	PART #	DESCRIPTION	WT/LB.
1	FP-FPX-8-8	FEMALE PIPE - FEMALE PIPE SWIVEL	N/A
2	FX-590	HYD. PIPE LINE (21" LG.)	N/A
3	FX-589	HYD. PIPE LINE (23" LG.)	N/A
4	FPT-8	TEE - FITTING	N/A
5	FX-585	HYD. PIPE LINE (18 1/2" LG.)	N/A
6	FP-FP90-8-8	ELBOW - FITTING	N/A
7	FX-583	HYD. PIPE LINE (28 1/8" LG.)	N/A
8	FX-584	HYD. PIPE LINE (41 1/2" LG.)	N/A
9	MP-FPX-90-8-8	FITTING - 90 DEGREES ON CYLINDER	N/A
10	WPT-3	WELD CLAMP - CLAMP	N/A
11	H3222/222	CLAMP - HYD. PIPE	N/A
12	CPT-3	COVER PLATE - CLAMP	N/A
13	BCPT-3	BOLT - CLAMP	N/A
14	FX-606	HYD. HOSE TO CYLINDER (COMES W/FITTINGS) 20" LG.	N/A
15	JJ-94	HYD. HOSE TO CYLINDER (COMES W/FITTINGS) 24" LG.	N/A
16	FX-607	HYD. HOSE TO TRACTOR (COMES W/FITTINGS) 13' 4" LG.	N/A



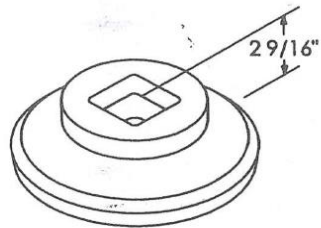
**FX-577
CONCAVE**



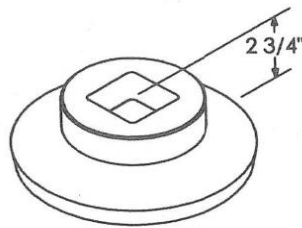
**FX-578
CONVEX**



**FX-579
SPACER SPOOL**



**FX-612
CONCAVE**



**FX-613
CONVEX**

OFX - SPOOLS

REF #	PART #	DESCRIPTION	WT/LB.
1	FX-577	HALF SPOOL - CCV, 2 1/4" SQ.	N/A
2	FX-578	HALF SPOOL - CVX, 2 1/4" SQ.	N/A
3	FX-579	SPACER SPOOL - 2 1/4" SQ.	N/A
4	FX-612	HALF SPOOL - CCV, 2 1/4" SQ.	N/A
5	FX-613	HALF SPOOL - CVX, 2 1/4" SQ.	N/A

Domries Enterprises, Inc.

12281 Road 29
Madera, CA 93637



Phone (559) 673-9143

Fax (559) 673-4110

www.domreisentinc.com

WARRANTY

Domries warrant's all products of its manufacture to be free of defects in material and workmanship under normal usage and maintenance for the period of one year from the date of delivery to the original purchaser.

RETURN GOODS

Domries shall have the option of requiring the prepaid return of any parts claimed defective, however, no parts shall be returned without Domries warranty form with good authorized number. Goods shall be returned to such location as shall be designed by Domries.

Domries will at its option, either repair or replace, F.O.B. Domries factory. Such parts as appear to Domries upon inspection, to have been defective in materials and/or workmanship. Wearing parts that are determined to be defective are subject to an adjustment based upon useful life.

REPAIRS

Any field or repairs must have the authorized repair number from Domries before any work is done. Claim for warranty must be made with a Domries warranty form and repair number.

Domries will not accept any charged other than its direct Dealer shop labor costs and part required to remedy such parts and/or workmanship at its Dealer place of business. The WARRANTY specifically excludes any charges for delivery, transportation, and/or shipping cost.

If the dealer is requested by the customer to travel or haul the machine to his shop or repair shop for the purpose of performing a warranty obligation or free inspection, it would be for the customers' convenience, and the cost of such a trip is to be paid by the customer. Any arrangement whereby the Dealer agrees to absorb all or a part of the cost is to be made between the Dealer and the customer. To be considered a courtesy to the Customer by their Dealer.

LIMITED WARRANTY

Outside purchase equipment and accessories (not of Domries manufacture) are warranted only to the extent of the original manufacturer's warranty to Domries.

Item Limited - Hydraulic cylinders and hose - Bearings - Disc Blades - Wheals - Tires - Tubes - Seals.

No Warranty shall be paid by Domries before the part or parts and labor have been paid to Domries by the manufacturer. Domries shall then compensate the dealer or customer.

NO WARRANTY

(1) New product that has been subjected to operation in excess in recommended capacities, misused, negligence, lack of maintenance or accident or have been altered or repaired in any manner not authorized by Domries.

(2) Sharp turns while machine is ground void warranty, with the exception of a drag disc.

Domries shall in no event be responsible for any delay or any other consequential or indirect damage in connection with fulfilling any obligation under this WARRANTY.

Domries reserves the right to make changes at any time in designs, materials and/or specifications of its product without becoming liable or obligated in any way to make similar changes in previously manufactured products.

This WARRANTY IS IN LIEU OF ALL OTHER WARRANTIES COVERING DOMRIES PRODUCTS and no other Warranties express or implied are made or authorized by Domries Enterprises, Inc.

This WARRANTY BECAME EFFECTIVE with shipments made on or after August 1st 1998