

# SERIES OF MX-W

## PARTS & OPERATOR MANUAL

# Wheel Type Offset Disc Harrow Semi Stubble Disc Wing Fold

Domries Enterprises, Inc

12281 Rd 29

Madera, Ca 93638

Phone#(559) 673-9143 Fax#(559) 673-4110

Visit our Web-Site at [www.domriesentinc.com](http://www.domriesentinc.com)



## ATTENTION! BECOME ALERT!

### YOUR SAFETY IS INVOLVED!

This Symbol is used to call your attention to safety precautions. That should be followed by the operator to avoid accidents. When you see this – Heed Its Warning.

Many hours of lost time and much suffering is caused by the failure to practice simple safety rules.

1. **READ** this manual carefully to acquaint your – self with the Disk Harrow. Opening unfamiliar equipment can cause accidents.
2. **Lower Implement** if possible, when adjusting maintenance work; otherwise **BLOCKS IT SECURELY** at a workable height.
3. **When Implement** and tractor is parked always lower disk to the ground and place a **FLAG OR OTHER WARNING DEVICE** on each corner as someone could run or bump into the implement.
4. Implement should be **DETACHED ONLY** in an area where Children **DO NOT PLAY**.
5. **DO NOT** wear loose fitting clothing that could catch on various parts.
6. Machinery should be **OPERATED ONLY** by those who are **RESPONSIBLE AND DELEGATED** to do so.
7. **ONLY ONE PERSON** – the operator – should be permitted on the tractor when implement is in operation, he should be thoroughly familiar with tractor and implement.
8. **MAKE CERTAIN** that everyone is clear before starting tractor and implement combination.
9. **BEFORE WORKING** under the any hydraulically controlled unit **MAKE SURE** it is **SECURELY BLOCKED**.
10. **The RATE OF SPEED** on hillsides or curves should be regulated so there is no danger of tipping.
11. **DO NOT** drive too close to the edge of a ditch or creek.
12. **REDUCE SPEED** when transporting unit to avoid bouncing and momentary loss of steer ability.
13. **MAKE CERTAIN** tractor is equipped with sufficient front-end weight to counter-balance the plow weight and maintain stability of front of tractor
14. **DO NOT** attempt to operate tractor and implement unless you are in the driver seat.
15. **ALWAYS** place transmission in **PARK or NEUTRAL, LOCK BRAKES, STOP ENGINE AND REMOVE START KEY** before dismounting from the tractor.
16. **NEVER** stand between tractor and disc when hitching.
17. **PROVIDE** a first aid kit. Treat all scratches, cuts, etc. with proper antiseptic immediately.
18. If **DECALS** become damaged or come off, they should be replaced immediately.
19. **REMEMBER** that safe operation is no accident.

## ON HIGHWAY OPERATION

1. Use the **SLOW-MOVING** vehicle emblem in daytime and approved warning lights at night, or during other periods of poor visibility, to prevent highway accidents.
2. **COMPLY** with Local highway regulation concerning moving machinery on highways.
3. **MAINTAIN** complete control of machines at all times when traveling on the highway
4. Due to the width of implement, **USE EXTRA CAUTION** on highways, far lanes and when approaching gates

# IMPORTANT! PLEASE READ!

## TO OUR CUSTOMER – USER’S RESPONSIBILITY- WARRANTY

### TO OUR CUSTOMER

The following pages and illustrations are printed to help supply you with the knowledge to better operate and service your new DOMRIES equipment.

We are proud to have you as a customer and feel you will be proud to be a DOMRIES owner.

Any piece of equipment needs and must have a certain amount of service and maintenance to keep it in top running condition. We have attempted to cover all the adjustments required to fit most conditions; however, there may be times special care must be taken to fit a condition.

**Study this operator’s manual carefully and become acquainted with all the adjustments and operating procedures before attempting to operate your new equipment.** Remember, it is a machine and has been designed and tested to do an efficient job in most operating conditions and will perform in relation to the service it receives.

If special attention is required for some conditions, ask your DOMRIES dealer; his Parts and Service Organization will be glad to help and answer any question on operation and service of your new machine.

### ATTENTION! BECOME ALERT!

### YOUR SAFETY IS INVOLVED

This symbol is used to call your attention to safety precautions that should be followed by the operator to avoid accidents. When you see this symbol – Heed Its Warning.

### USER’S RESPONSIBILITY

It is the responsibility of the user to read the Operator’s Manual and understand the safe and correct operating procedures as pertains to the operation of the product, and to lubricate and maintain the product according to the maintenance schedule in the Operator’s Manual.

The user is responsible for inspecting his machine and for having parts repaired or replaced when continued use of the product would cause damage or excessive wear to the other parts. It is the user’s responsibility to deliver his machine to a DOMRIES dealer, for service or replacement of defective parts which are covered by the standard warranty. When requesting warranty service, you present your copy of delivery record.

**MODEL#** \_\_\_\_\_

**SERIAL#** \_\_\_\_\_



# WHEEL TYPE OFFSET DISC HARROWS

OFNX-W  
OFMX-W  
SERIES

**STUBBLE DISC  
WING FOLD**



**DOMRIES ENTERPRISES, INC**

12281 Road 29

Madera, California 93638

Office (559) 673-9143 Fax (559) 673-4110

Visit our website @ [www.domries.com](http://www.domries.com)



# OFMX-W SPECIFICATIONS (86" FRAME)

## 10" SPACING

MODEL	WIDTH CUT	NO. OF BLADES	WORKING WEIGHTS			APPROX. DRAWBAR POWER		
			MACHINE-PER	BLADE-PER	FT. OF CUT	4 MPH.	6 M.P.H	LBS. PULL
OFMX-W-1010-4882	22'0"	48	12,447	259	565	188	250	14,065
OFMX-W-1010-5284	23'10"	52	13,536	261	586	198	271	15,295
OFMX-W-1010-5882	26'7"	58	14,625	252	547	231	305	16,526

## 12" SPACING

MODEL	WIDTH CUT	NO. OF BLADES	WORKING WEIGHTS			APPROX. DRAWBAR POWER		
			MACHINE-PER	BLADE-PER	FT. OF CUT	4 MPH.	6 M.P.H	LBS. PULL
OFMX-W-1212-4882	22'0"	44	19,693	447	895	250	337	22,056
OFMX-W-1212-5284	24'0"	48	21,951	457	914	270	368	24,585
OFMX-W-1212-5882	26'0"	52	24,125	463	927	290	391	27,020

## OPTIONS

- BLADE CLEANERS
- BLADE EDGE & THICKNESS
- DURA FACED BLADES
- BOLT ON FURROW FILLER
- BOLT ON REAR UTILITY HITCH
- BOLT ON BLADE EXTENSIONS
- BLADE SPACING (10 1/2" AND 12")

## FEATURES

- TRUNNION REGREASABLE BALL BEARINGS
- 1 3/4" SQ. HI CARBON STEEL GANG RODS
- HYDRAULIC CYLINDERS, HYDRAULIC HOSES-STANDARD EQUIPMENT.
- LEVELING LINKAGE  
KEEPS DISC LEVEL IN ALL STAGES
- GANG ANGLED SET BARS  
WITH NON SLIP SET BARS AND DROP PINS

## DOMRIES ENTERPRISES, INC

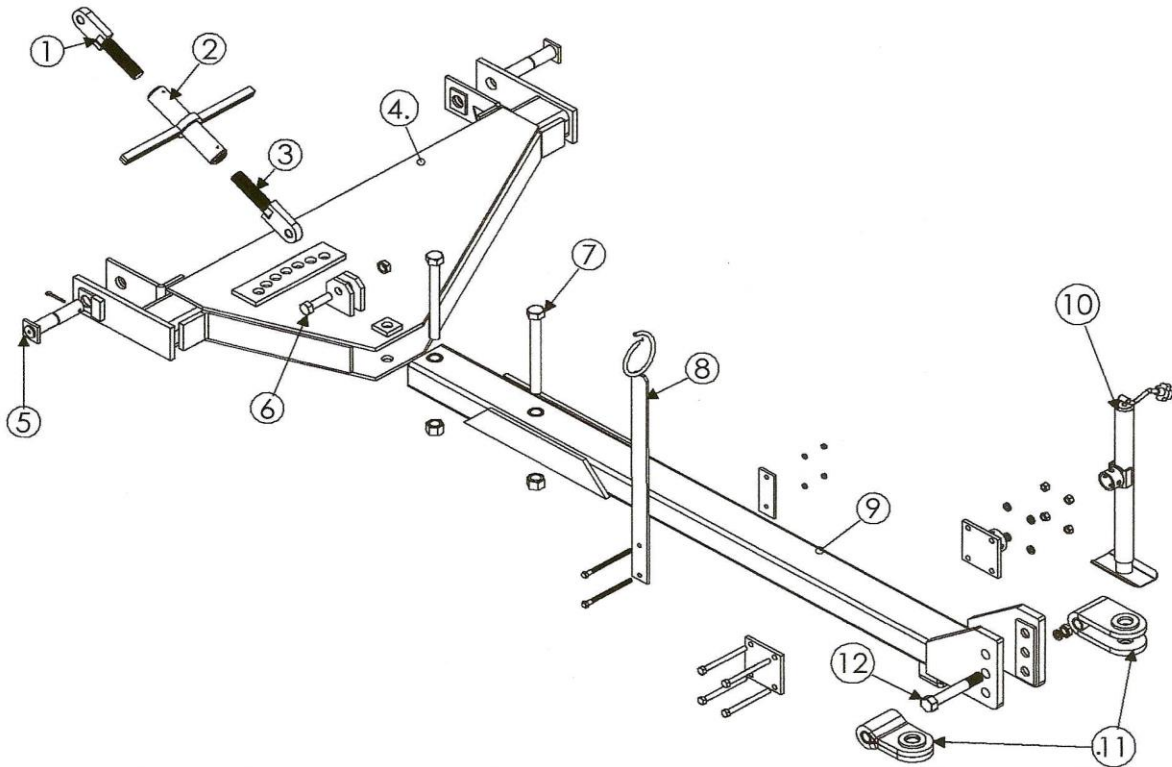
12281 Road 29

Madera, California 93638

Office (559) 673-9143 Fax (559) 673-4110

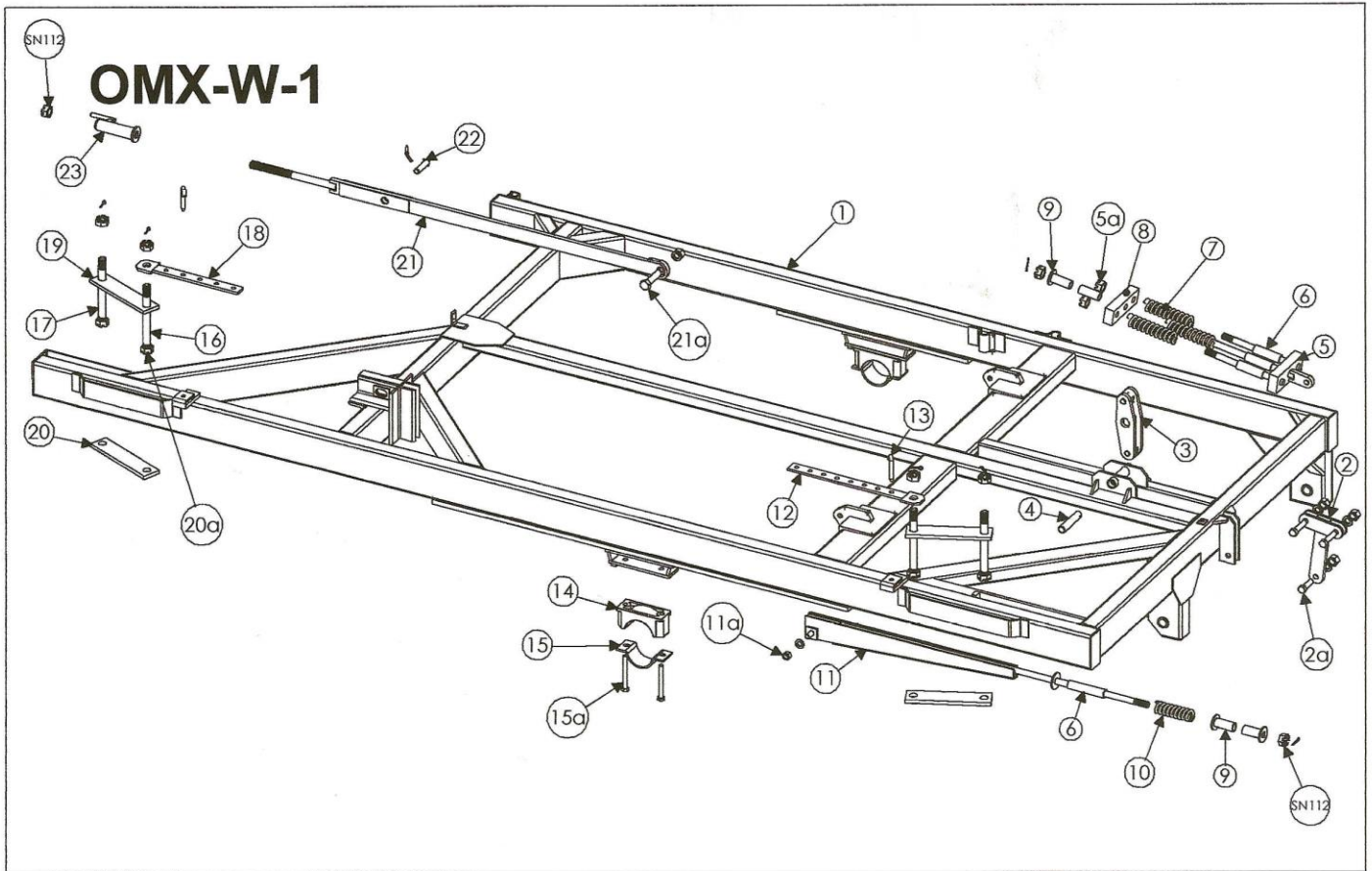
Visit our website @ [www.domries.com](http://www.domries.com)





## HITCH ASSEMBLY

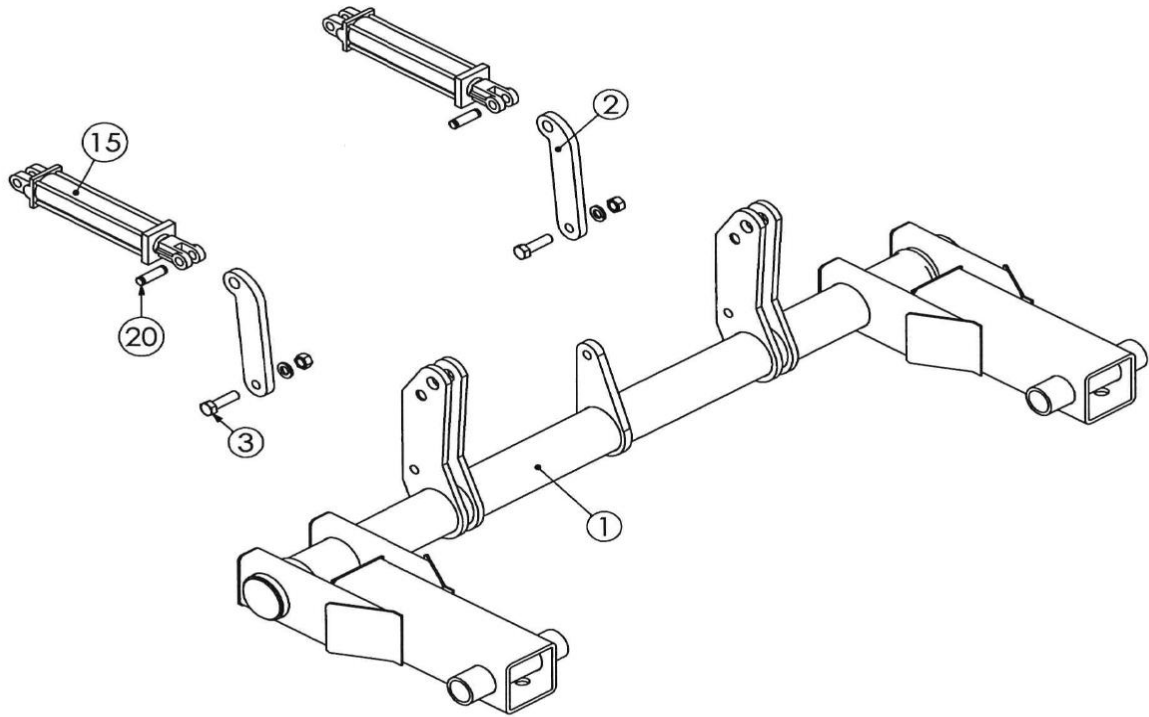
REF #	PART #	DESCRIPTION	WT/LB.
1	OX-9	BOLT - TURNBUCKLE, R.H. THRD.	6.5
2	OX-10	BODY - TURNBUCKLE	14.75
3	OX-11	BOLT - TURNBUCKLE, L.H. THRD.	6.5
4	OM-5	CROSS MEMBER - HITCH	490.0
5	ON-61	PIN - HITCH	5.5
6	CS1312-5	BOLT - 1" X 3 1/2" LG. GR. 5	1.1
	LN1	LOCK NUT - 1"	.1
7	SC11412-8	BOLT - 1 1/4" X 12" LG. GR. 8	N/A
	N114	NUT - 1 1/4"	N/A
8	ON-139	HOSE GUIDE W/CLAMP	12
	CS12712-5	BOLT - 1/2" X 7 1/2" LG. GR. 5	N/A
	LW12	LOCK WASHER - 1/2"	N/A
	N12	NUT - 1/2"	N/A
9	OX-7ME	DRAW BAR - HITCH, HVY	250.0
10	OX-138	HITCH JACK - 5000 LBS. (INC. MOUNTING PARTS)	17.0
	CS588-5	BOLT - 5/8" X 8" LG. GR. 5	N/A
	LW58	LOCK WASHER - 5/8"	N/A
	N58	NUT - 5/8"	N/A
11	OX-8	TONGUE SINGLE, HVY.	24
	OX-8C	TONGUE CLEVIS, HVY.	23.5
12	OX-126	BOLT - HITCH TONGUE	3.7
	LW114	LOCK WASHER - 1 1/4"	N/A
	N114	NUT - 1 1/4"	N/A



## MAIN FRAME ASSEMBLY

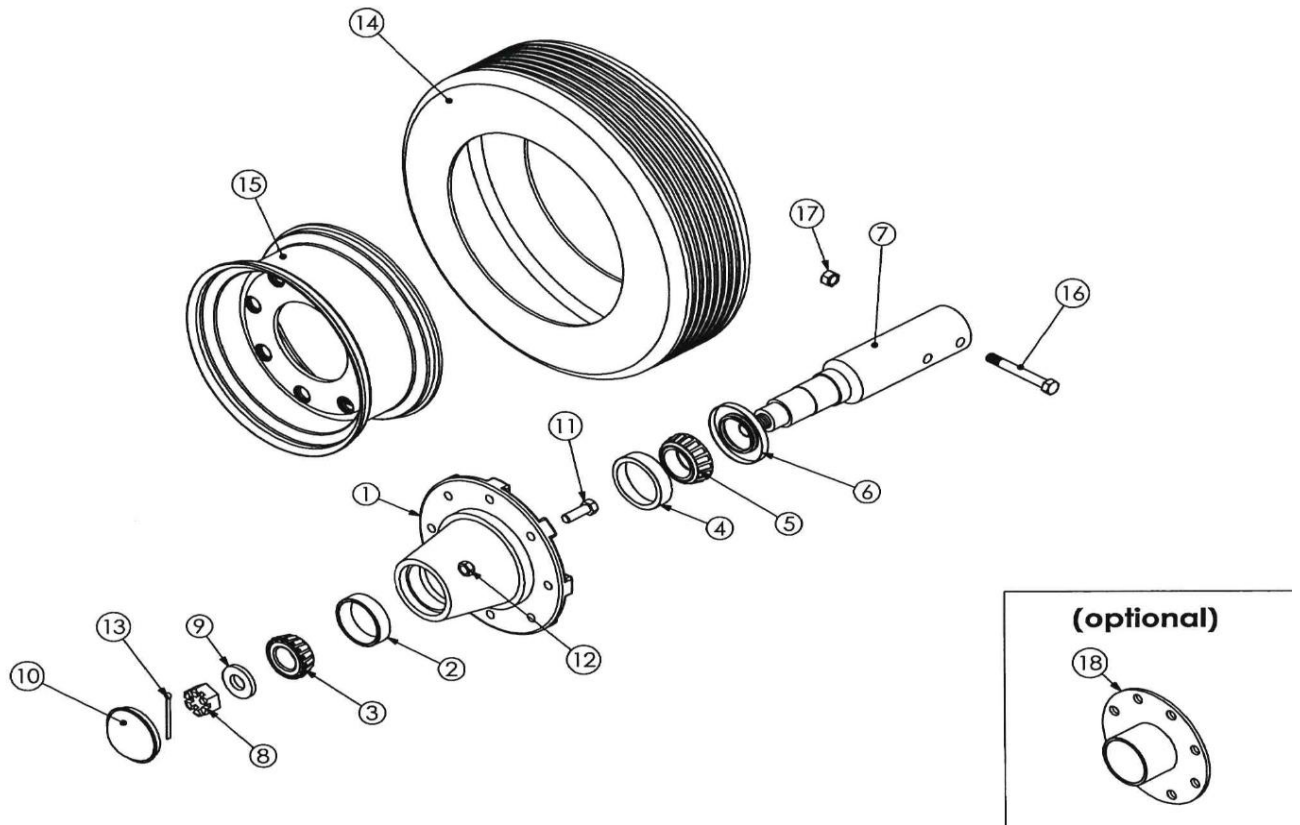
REF #	PART #	DESCRIPTION	WT/LB.
1	OMX-W-1	MAIN FRAME - 86" (WING DISC)	
2	ON-12	HAMMER - LEVELING	26.3
2a	CS1312-5	BOLT - 1" X 3 1/2" LG. GR. 5	
	LN1	LOCK NUT - 1"	
3	ON-18	LEVER - SWIVEL	26.3
4	ON-134	PIN - ROCKER	4.0
5	ONX-13	LEVELING ROD - DUAL SPRING	64.0
5a	SN112	SLOTTED NUT - 1 1/2" COTTER PIN	
6	ON-150	TUBE CRUSH SPRING	2.5
7	OX-14 (ON-14)	LEVELING SPRING	7.0
8	OX-50	BLOCK - RETAINER	20.0
9	OX-15	TUBE FLANGE	1.8

REF #	PART #	DESCRIPTION	WT/LB.
10	OX-14S	SPRING - LEVELING	11.7
11	OMX-22	LEVELING ROD - REAR	67.0
11a	CS114-5	BOLT - 1 1/4" X 4" LG. GR. 5	1.2
	LN1	LOCK NUT - 1 1/4"	0.1
12	OX-64	SET BAR - ANGLE, FRNT. GNG.	11.2
13	ON-67	PIN - J	2.0
14	ON-68	BLOCK AXLE MNTG.	29.1
15	ON-69	CAP - AXLE MTG.	9.0
15a	CS78712-5	BOLT - 7/8" X 7 1/2" LG. GR. 5	1.5
	LW78	LOCK WASHER - 7/8"	N/A
	N78	NUT - 7/8"	N/A
16	ON-70	GANG FRAME BOLT (LONG) 2 PER DISC	10.0
17	ON-71	GANG FRAME BOLT (SHORT) 6 PER DISC	10.1
18	OX-66	SET BAR - ANGLE, REAR GNG.	9.0
19	OW-1-21	STRAP - GANG TO FRAME, TOP	13.0
20	OW-1-22	STRAP - GANG TO FRAME BOTTOM	14.0
20a	SN112	SLOTTED NUT - 1 1/2"	0.8
21	OMX-58	ROD - DEPTH CONTROL	79.9
21a	CS114-5	BOLT - 1 1/4" X 5" LG. GR. 5	2.3
	LW114	LOCK WASHER - 1 1/4"	N/A
	N114	NUT - 1 1/4"	N/A
22	OX-140	PIN - TRANSPORT	3.9
	BLD-33	KLICK PIN	0.2
23	ON-60	CRANK DEPTH CONTROL	5.0
	SN112	SLOTTED NUT - 1 1/2"	0.8



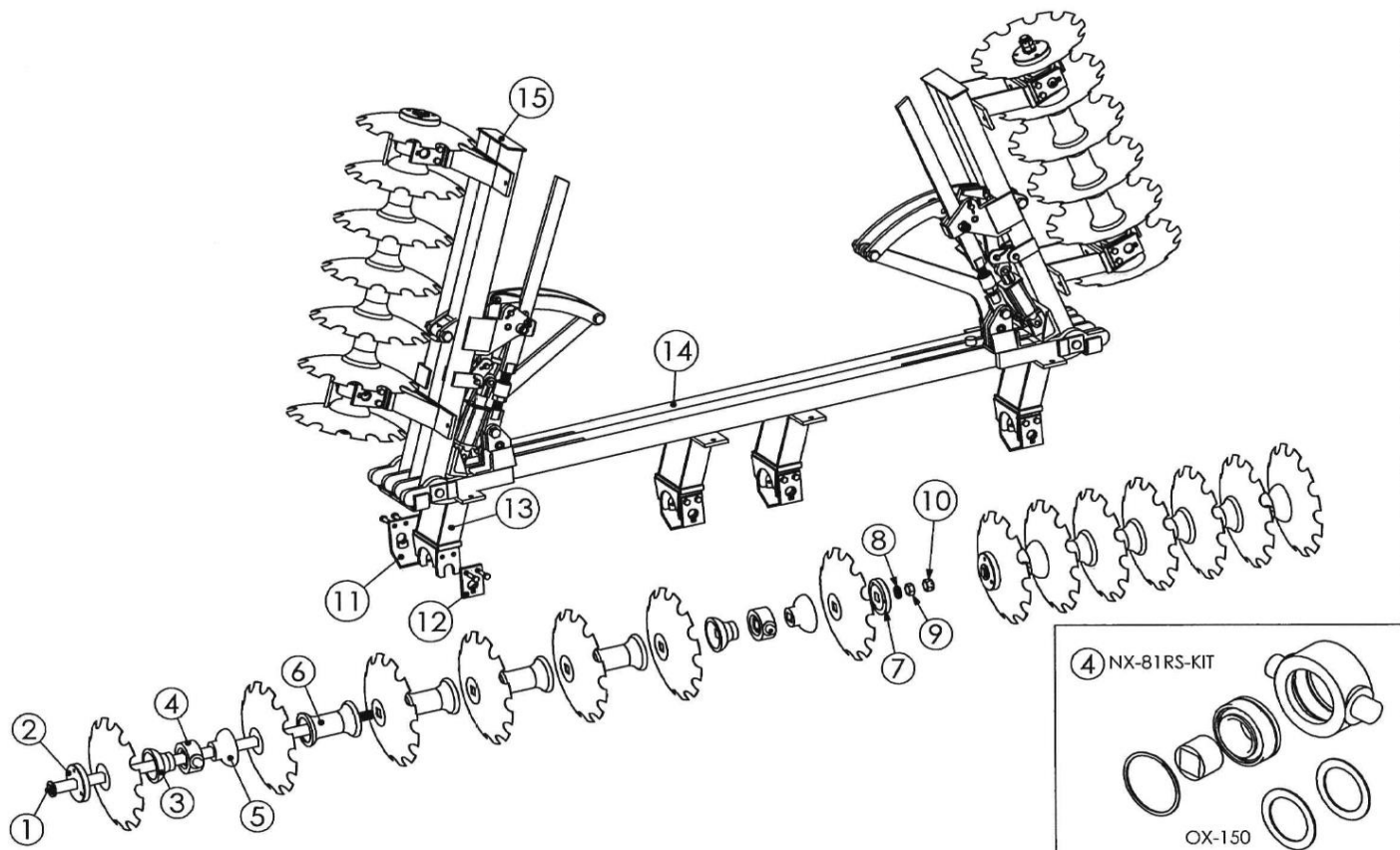
## AXLE ASSEMBLY

REF #	PART #	DESCRIPTION	WT/LB.
1	OM-25	AXLE	459.0
2	ON-56	AXLE SCISSOR	14.0
3	CS1312-5	BOLT - 1" NC. X 3 1/2" LG. GR. 5	1.1
	LW1	LOCK WASHER - 1"	N/A
	N1	NUT - 1"	N/A
4	ON-53	HYD. CYLINDER 4" BORE X 16" STR.	57.0
5	ON-55	PIN W RETAINER (HYD. CYL.)	0.9



## SPINDLE ASSEMBLY

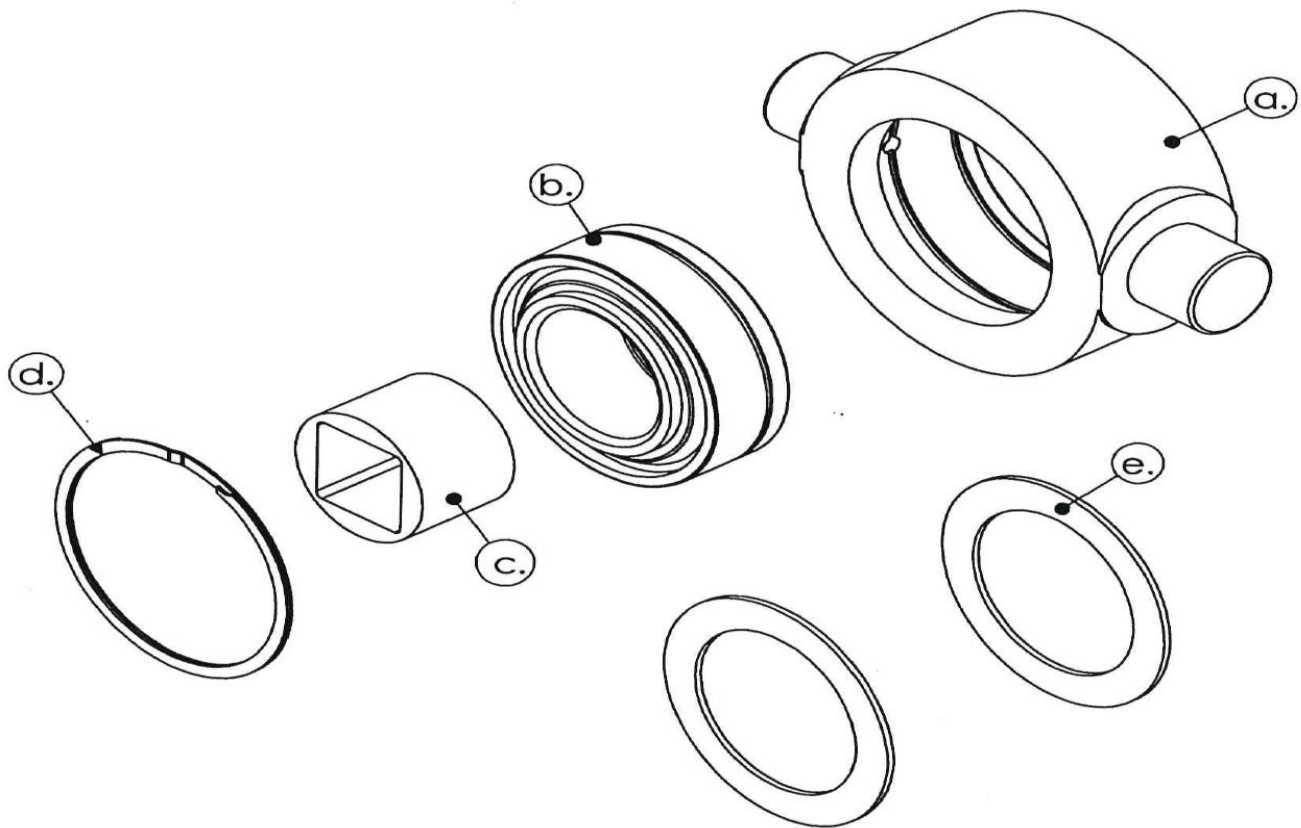
1	RPO-163	HUB W/ CUPS	10.0
2	RPO-147	BEARING CUP - OUTER	0.1
3	RPO-148	BEARING CONE - OUTER	0.3
4	RPO-145	BEARING CUP - INNER	0.2
5	RPO-146	BEARING CONE - INNER	0.4
6	RPO-144	OUTER SEAL	0.1
7	FX-518	SLIP IN SPINDLE	9.0
8	SN78F	SLOTTED NUT	0.1
9	RPO-159	SPINDLE WASHER	0.01
10	RPO-151	DUST CAP	0.2
11	RPO-168	LUG BOLT - (1/2") NG X 1" LG.)	0.1
12	N916-F	NUT 9/16"	N/A
13	CP3162	COTTER PIN 3/16" X 2" LG.	N/A
14	FX-534	TIRE - 7.60-15. RIB 6 PLY.	24.0
15	FX-533	WHEEL 15 X 6, 8 (1/2)	23.0
16	CS12412-5	BOLT - 1/2" NC. X 4 1/2" GR.	N/A
17	LN-12	LOCK NUT - 1/2"	N/A
18	FX-532	DUST PROTECTOR - PR, WHEEL HUBS W/LUG NUTS	15.7



## OFMX-W GANG ASSEMBLY

REF #	PART #	DESCRIPTION	WT/LB.
1	NX-101-10 1/2	GANG ROD - 1 3/4" SQ. 4 BLD. 10 1/2" SPC.	42.4
	NX-102-10 1/2	GANG ROD - 1 3/4" SQ. 5 BLD. 10 1/2" SPC.	45.2
	NX-103-10 1/2	GANG ROD - 1 3/4" SQ. 6 BLD. 10 1/2" SPC.	51.2
	NX-104-10 1/2	GANG ROD - 1 3/4" SQ. 7 BLD. 10 1/2" SPC.	60.6
	NX-105-10 1/2	GANG ROD - 1 3/4" SQ. 8 BLD. 10 1/2" SPC.	70.0
2	OX-101-12	GANG ROD - 1 3/4" SQ. 4 BLD. 12" SPC.	N/A
	OX-102-12	GANG ROD - 1 3/4" SQ. 5 BLD. 12" SPC.	N/A
	OX-103-12	GANG ROD - 1 3/4" SQ. 6 BLD. 12" SPC.	N/A
	OX-104-12	GANG ROD - 1 3/4" SQ. 7 BLD. 12" SPC.	N/A
	OX-105-12	GANG ROD - 1 3/4" SQ. 8 BLD. 12" SPC.	N/A
3	FXSL-106	EXT. WASHER - CCV., 1 3/4" SQ.	17.0
4	NX-84-10 1/2	HALF SPOOL - CVX, 1 3/4" SQ. 10 1/2" SPC.	17.8
	NX-84-12	HALF SPOOL - CVX, 1 3/4" SQ. 12" SPC.	N/A
5	NX-81RS-KIT	GNG. BEARING ASSY. - 1 3/4" SQ. RELUBE	19.4
6	NX-83	HALF SPOOL - CCV., 1 3/4" SQ. 10 1/2" & 12" SPC.	17.8
7	NX-82-10 1/2	SPACER SPOOL - 1 3/4" SQ. 10 1/2" SPC.	38.2
	NX-82-12	SPACER SPOOL - 1 3/4" SQ. 12" SPC.	N/A

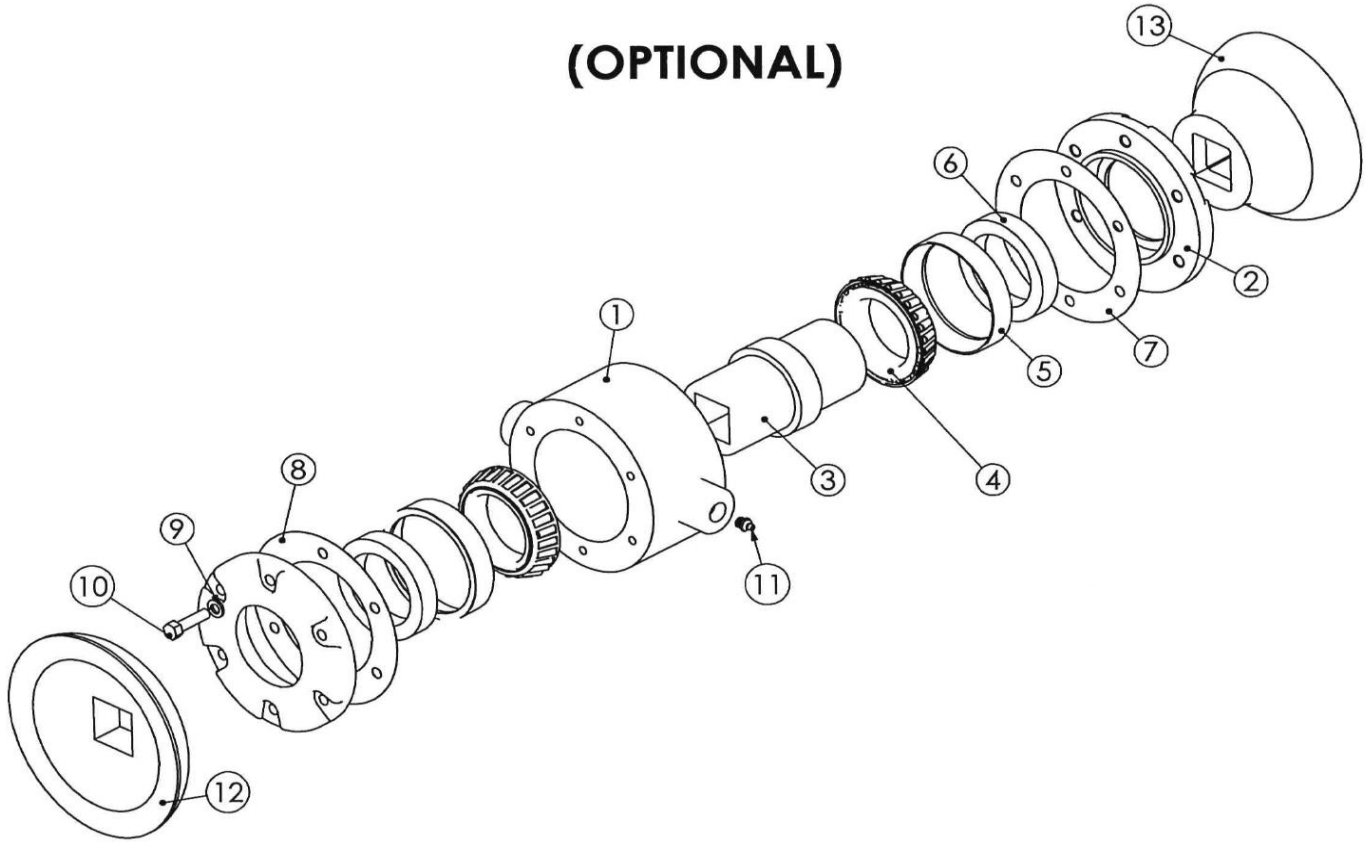
REF #	PART #	DESCRIPTION	WT/LB.
7	FXSL-154	EXT. WASHER - CVX, 1 3/4" SQ.	
8	LW134	LOCK WASHER - 1 3/4"	
9	JN1334	JAM NUT - 1 3/4"	
10	N134	NUT - 1 3/4"	
11	FXSL-223F	BRG. STRAP CAP W/GUARD (FRONG GANG)	
	FXSL-223R	BRG. STRAP CAP W/GUARD (REAR GANG)	
	CS34214-5	BOLT - 3/4" NC. X 2 1/4" LG. GR. 5	
	LW34	LOCK WASHER - 3/4"	
	N34	NUT - 3/4"	
12	FXSL-222	BRG. STRAP CAP 1 3/4" SQ. (SHORT)	
	CS34234-5	BOLT - 3/4" NC., X 2 3/4" LG. GR. 5	
	LW34	LOCK WASHER - 3/4"	
	N34	NUT - 3/4"	
13	FXSL-224	BRACKET - BRG. FRONT	
	FXSL-225	BRACKET - BRG. REAR	
	FXSL-224-32	BRACKET - BRG. FRONT (USING 32" BLDS.)	
	FXSL-225-32	BRACKET - BRG. REAR (USING 32" BLDS.)	
14	OM2-01F	GANG FRAME FRONT CENTER 10 1/2" SPC.	
	OM2-01R	GANG FRAME REAR CENTER 10 1/2" SPC.	
15	OM2-28	WING - RIGHT HAND FRONT, 4 BLD. 10 1/2" SPC.	
	OM2-29	WING - LEFT HAND REAR, 4 BLD. 10 1/2" SPC.	
	OM2-30	WING - RIGHT HAND FRONT, 5 BLD. 10 1/2" SPC.	
	OM2-31	WING - LEFT HAND FRONT, 5 BLD. 10 1/2" SPC.	
	OM2-32	WING - RIGHT HAND REAR, 5 BLD. 10 1/2" SPC.	
	OM2-33	WING - LEFT HAND REAR, 5 BLD. 10 1/2" SPC.	
	OM2-34	WING - RIGHT HAND FRONT, 6 BLD. 10 1/2" SPC.	
	OM2-35	WING - LEFT HAND FRONT, 6 BLD. 10 1/2" SPC.	
	OM2-36	WING - RIGHT HAND REAR, 6 BLD. 10 1/2" SPC.	
	OM2-37	WING - LEFT HAND REAR, 6 BLD. 10 1/2" SPC.	
	OM2-38	WING - RIGHT HAND FRONT, 7 BLD. 10 1/2" SPC.	
	OM2-39	WING - LEFT HAND FRONT, 7 BLD. 10 1/2" SPC.	
	OM2-40	WING - RIGHT HAND REAR, 7 BLD. 10 1/2" SPC.	
	OM2-41	WING - LEFT HAND REAR, 7 BLD. 10 1/2" SPC.	
	OM2-42	WING - RIGHT HAND FRONT, 8 BLD. 10 1/2" SPC.	
	OM2-43	WING - LEFT HAND FRONT, 8 BLD. 10 1/2" SPC.	
	OM2-44	WING - RIGHT HAND REAR, 8 BLD. 10 1/2" SPC.	
	OM2-45	WING - LEFT HAND REAR, 8 BLD. 10 1/2" SPC.	
	OM2-46	WING - RIGHT HAND FRONT, 9 BLD. 10 1/2" SPC.	
	OM2-47	WING - LEFT HAND FRONT, 9 BLD. 10 1/2" SPC.	
	OM2-48	WING - RIGHT HAND REAR, 9 BLD. 10 1/2" SPC.	
	OM2-49	WING - LEFT HAND REAR, 9 BLD. 10 1/2" SPC.	
	OM2-50	WING - RIGHT HAND FRONT, 10 BLD. 10 1/2" SPC.	
	OM2-51	WING - LEFT HAND FRONT, 10 BLD. 10 1/2" SPC.	
	OM2-52	WING - RIGHT HAND REAR, 10 BLD. 10 1/2" SPC.	
	OM2-53	WING - LEFT HAND REAR, 10 BLD. 10 1/2" SPC.	



## NX-81-RS-KIT

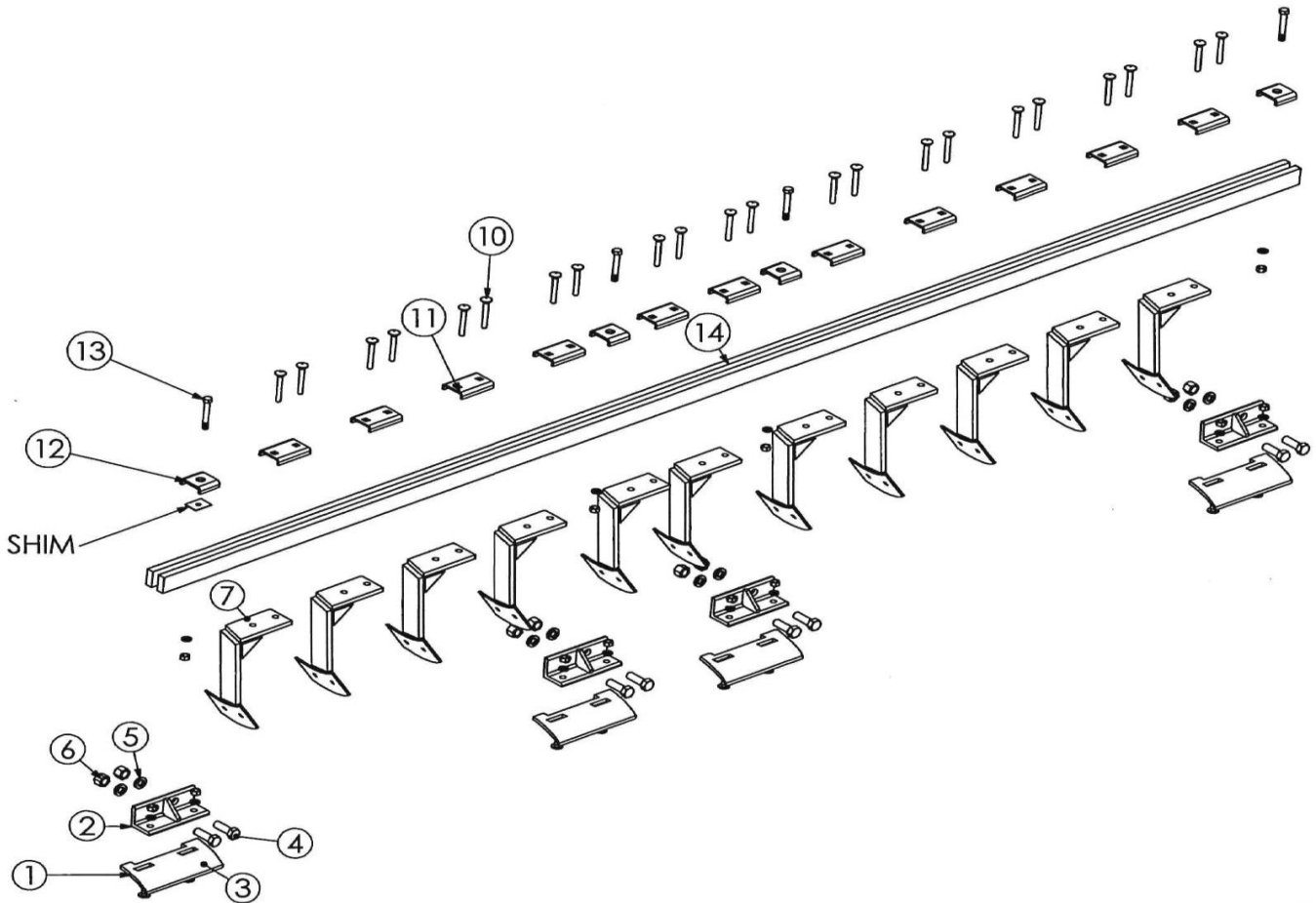
REF #	PART #	DESCRIPTION	WT/LB.
1	NX-81RS-KIT	GNG. BRG ASSY. - 1 3/4" SQ RELUBE	19.4
a.	OFNX-81-1 3/4"	BRG. HOUSING W/(Z) OX-150 BRG. SHIELDS	15.0
b.	RPT-502	BEARING GNG.	5.0
c.	RPT-501 (NX-80)	INSERT - 1 3/4" SQ. X 2" LG.	1.6
d.	RPT-510	RETAINING RING - GNG. BRG.	0.7
e.	OX-150	BRG. - SHIELDS	0.3

**(OPTIONAL)**



## TAPERED ROLLER BEARING ASSEMBLY

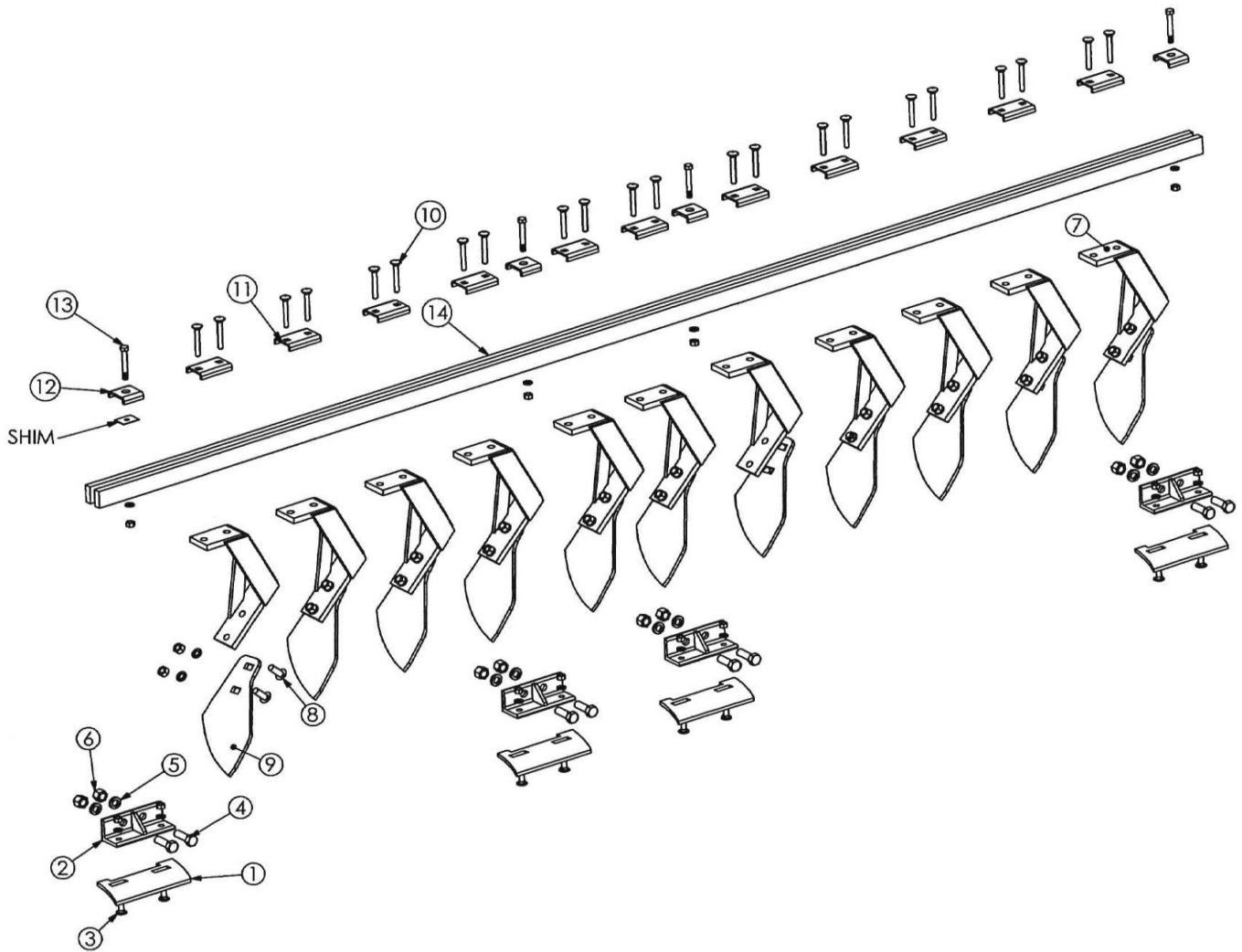
REF #	PART #	DESCRIPTION	WT/LB.
	FX-W-80R- 1 3/4-KIT	TRUNION MOUNTED TAPERED ROLLER BEARING ASSY.	N/A
	FX-W-80R- 1 3/4-OPT.	TRUNION MOUNTED TAPERED ROLLER BEARING ASSY.	N/A
1	OFS-1	BEARING HOUSING - TAPER ROLLER	N/A
2	OFS-2	END CAP	4.4
3	OFS-4	INSERT - 1 3/4" SQ. X 6" LG.	5.51
4	OFS-5	BRG. CONE	1.3
5	OFS-6	BRG. CUP	0.4
6	OFS-7	SEAL	0.4
7	OX-145	GASKIT .010 THK.	0.01
9	CS381-5	BOLT - 3/8" NC. X 1" LG.	N/A
10	LW38	LOCK WASHER - 3/8"	N/A
11	7000	GREASE ZERK	0.1
12	FXSL-227	HALF SPOOL - CCV, 1 3/4" 12" SPACING	10.8
13	FXSL-228	HALF SPOOL - CVX, 1 3/4" 12" SPACING	15.2



## CLEANER ASSEMBLY, 28" d. BLDS

REF #	PART #	DESCRIPTION	WT/LB.
1	FXSL-230	THRASH PLATE - 10 1/2" SPACING	5.8
	FXSL-231	THRASH PLATE - 12" SPACING	1.0
2	FXSL-229	HOLDER - THRASH PLATE	N/A
3	CB12112-5	CARRIAGE BOLT - 1/2" NC. X 1 1/2" LG. GR. 5	0.2
	LW12	LOCK WASHER - 1/2"	0.1
	N12	NUT - 1/2"	0.1
4	CS58214-5	BOLT - 5/8" NC. X 2 1/4" LG. GR. 5	0.3
5	LW58	LOCK WASHER - 5/8"	0.1
6	N58	NUT - 5/8"	0.1
7	OFHX-300-F	CLEANER ARM - FRONT (WHEN USING 28" DISC BLADES ONLY)	10.0
	OFHX-300-R	CLEANER ARM - REAR (WHEN USING 28" DISC BLADES ONLY)	10.0
8	CB381-5	CARRIAGE BOLT - 3/8" NC. X 1" LG. GR. 5	0.1
	LW38	LOCK WASHER - 3/8"	0.1
	N38	NUT - 3/8"	0.1
9	OF-309	BLADE CLEANER	2.0

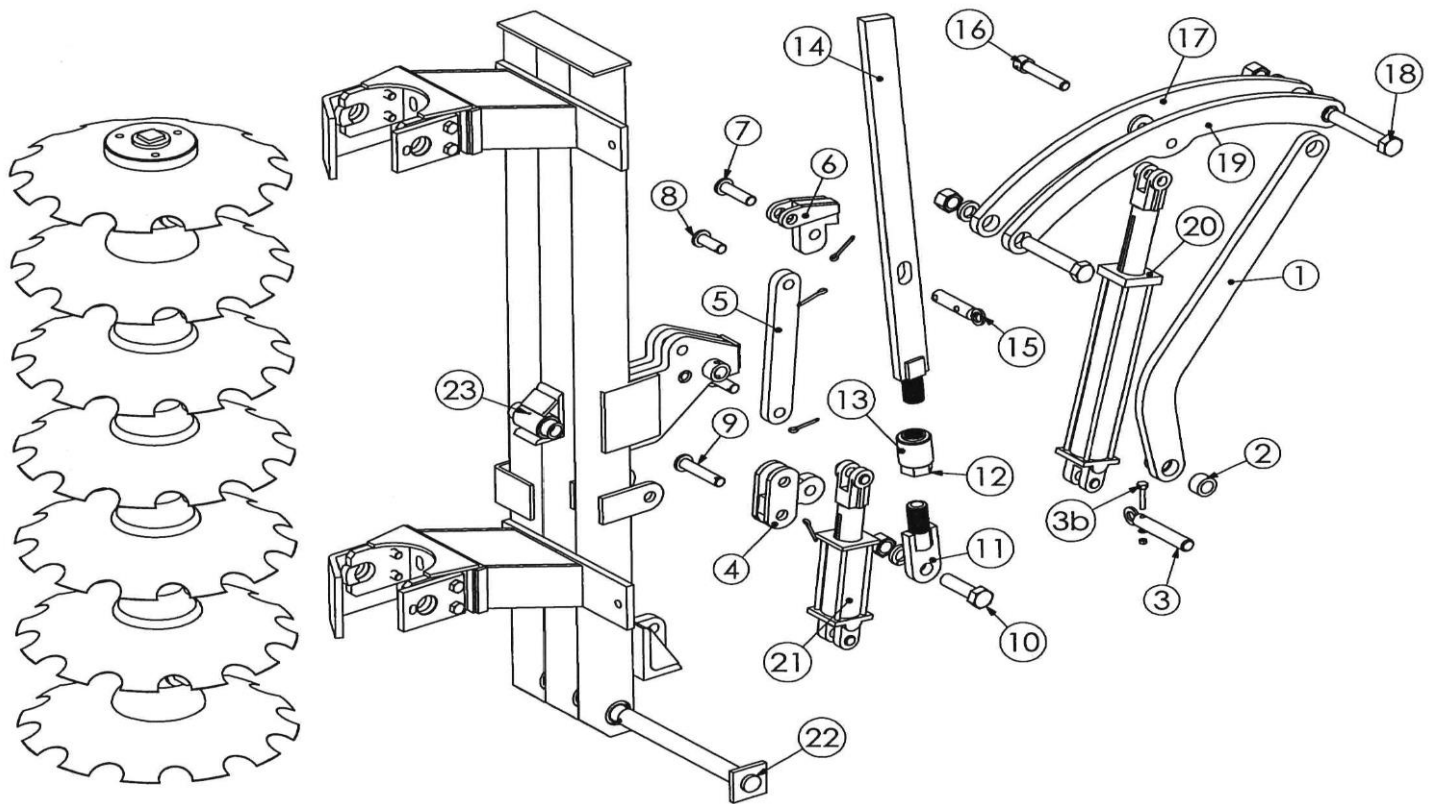
REF #	PART #	DESCRIPTION	WT/LB.
10	CB12312-5	CARRIAGE BOLT - 1/2" NC. X 3 1/2" LG. GR. 5	N/A
	LW12	LOCK WASHER - 1/2"	N/A
	N12	NUT - 1/2"	N/A
11	OF-305	CAP CLEANER ARM	0.5
12	OF-307	CAP - CLEANER ARM (STANDARD)	0.5
	OF-307-W	CAP CLEANER W/SHIM (CENTER GANGS ONLY)	0.07
13	CS34412-5	BOLT - 3/4" NC. X 4 1/2" LG. GR. 5	N/A
	LW34	LOCK WASHER - 3/4"	N/A
	N34	NUT - 3/4"	N/A
14	MWC-1	CLEANER BAR - CENTER GANG (WING DISC) 133" LG.	N/A
	OMC-4	CLEANER BAR - 4 BLADE, 10 1/2" SPC. 44" LG.	N/A
	ONC-5	CLEANER BAR - 5 BLADE, 10 1/2" SPC. 55" LG.	N/A
	OMC-6	CLEANER BAR - 6 BLADE, 10 1/2" SPC. 66" LG.	N/A
	OMC-7	CLEANER BAR - 7 BLADE, 10 1/2" SPC. 77" LG.	N/A
	OMC-8	CLEANER BAR - 8 BLADE, 10 1/2" SPC. 88" LG.	N/A
	OMC-9	CLEANER BAR - 9 BLADE, 10 1/2" SPC. 99 LG.	N/A
	OMC-10	CLEANER BAR - 10 BLADE, 10 1/2" SPC. 110 LG.	N/A
			N/A
		OPTIONAL CLEANER ASSY.	
	OFHX-300A-F	CLEANER ASSY. - HVY. DTY. (USE W/28" D BLD.)	N/A
	OFHX-300A-R	CLEANER ASSY. - HVY. DTY. (USE W/28" D BLD.)	N/A



## CLEANER ASSEMBLY, 32d. BLDS.

REF #	PART #	DESCRIPTION	WT/LB.
1	FXSL-231	THRASH PLATE - 12" SPACING	N/A
2	FXSL-229	HOLDER - THRASH PLATE	4.0
3	CB12112-5	CARRIAGE BOLT - 1/2" NC. X 1 1/2" LG. GR. 5	0.2
	LW12	LOCK WASHER - 1/2"	0.1
	N12	NUT - 1/2"	0.1
4	CS58214-5	BOLT - 5/8" NC. X 2 1/4" LG. GR. 5	0.3
5	LW58	LOCK WASHER - 5/8"	0.1
6	N58	NUT - 5/8"	0.1
7	FXSL-300-F	CLEANER ARM - FRONT	13.2
	FXSL-300-R	CLEANER ARM - REAR	13.2
8	CB58134-5	CARRIAGE BOLT - 5/8" NC. X 1 3/4" LG. GR. 5	0.1
	LW58	LOCK WASHER - 5/8"	0.1
	N58	NUT - 5/8"	0.1
9	RPO-130	BLADE CLEANER	N/A

REF #	PART #	DESCRIPTION	WT/LB.
10	CB58412-5	CARRIAGE BOLT - 5/8" NC. X 4 1/2" LG. GR. 5	N/A
	LW58	LOCK WASHER - 5/8"	N/A
	N58	NUT - 5/8"	N/A
11	OF-305	CAP CLEANER ARM	0.5
12	OF-307	CAP - CLEANER ARM (STANDARD)	0.5
	OF-307-W	CAP CLEANER W/SHIM (CENTER GANGS ONLY)	0.07
13	CS34412-5	BOLT - 3/4" NC. X 4 1/2" LG. GR. 5	N/A
	LW34	LOCK WASHER - 3/4"	N/A
	N34	NUT - 3/4"	N/A
14	MWC-1	CLEANER BAR - CENTER GANGS - 10 1/2" & 12" SPC.	N/A
	OMC-4	CLEANER BAR - 4 BLADE, 12" SPC. 49" LG.	N/A
	ONC-5	CLEANER BAR - 5 BLADE, 12" SPC. 61" LG.	N/A
	OMC-6	CLEANER BAR - 6 BLADE, 12" SPC. 73" LG.	N/A
	OMC-7	CLEANER BAR - 7 BLADE, 12" SPC. 85" LG.	N/A
	OMC-8	CLEANER BAR - 8 BLADE, 12" SPC. 97" LG.	N/A
		OPTIONAL CLEANER ASSY.	
	OFHX-300A-F	CLEANER ASSY. - HVY. DTY. (USE W/28" D BLD.)	N/A
	OFHX-300A-R	CLEANER ASSY. - HVY. DTY. (USE W/28" D BLD.)	N/A



## GANG WING ASSEMBLY

REF #	PART #	DESCRIPTION	WT/LB.
1	MW1-24	CONTROL ARM	38.5
2	MW1-27	SPACER BUSHING - CONTROL & PIVOT ARM	N/A
3	MW1-28	PIN LOCK DONW	2.5
3b	CS38212-5	BOLT - 3/8" NC. X 2 1/2" LG. GR. 5	N/A
	LW38	LOCK WASHER - 3/8"	N/A
	N38	NUT - 3/8"	N/A
4	MW1-33	PIVOT - BRACKET - LOCK DOWN	9.0
5	MW1-32	LINK - LOCK DOWN	10.5
6	MW1-29	LOCK DOWN TOGGLE	7.5
7	MW1-35	PIN - LOCK DOWN	1.0
	CP-5163	COTTER PIN - 5/16" X 3" LG.	N/A
8	MW1-34	PIN - LOCK DOWN	1.0
	CP5163	COTTER PIN - 5/16" X 3" LG.	N/A
9	MW1-36	PIN - LOCK DOWN	1.0
		COTTER - 5/16" X 3" LG.	N/A

REF #	PART #	DESCRIPTION	WT/LB.
10	CS114412-5	BOLT - 1 1/4" NC. X 4 1/2" LG. GR. 5	N/A
	LW114	LOCK WASHER - 1 1/4"	0.1
	N114	NUT - 1 1/4"	0.6
11	MW1-07	BOLT - TURN BUCKLE L.H. THRDS.	4.5
12	JN112	JAM NUT - 1 1/2"	0.6
	7000	GREASE ZERK	N/A
13	MW1-08	TURN BUCKLE - BODY	4.2
14	MW1-06	BOLT - TURN BUCKLE R.H. THRDS.	26.5
15	MW1-25	PIN - TRANSPORT W/CABLE	N/A
16	MW1-09	PIN - HYD. CYL. TO PIVOT ARMS	1.9
	CP5163	COTTER PIN - 5/16" X 3" LG.	N/A
17	MW1-11	PIVOT - ARM LEFT HAND	33.3
18	CS114712-5	BOLT - 1 1/4" NC. X 7 1/2" LG. GR. 5	3.2
19	MW1-12	PIVOT - ARM RIGHT HAND	33.3
20	JJ-90	HYD. CYLINDER - 3" DIA. X 12" STRK. (W/PINS)	30.0
21	MW1-37	HYD. CYLINDER - 2 1/4" DIA. X 4" STRK. LOCK CYL.	N/A
22	MW1-10	PIN - WING PIVOT	12.1
23	1641	GREASE ZERK - 1/4" - 28	N/A

THIS PAGE INTENTIONALLY LEFT BLANK



# DOMRIES ENTERPRISES, INC.

12281 Road 29, Madera CA 93638 • (P) 559-673-9143 • (F) 559-673-4110

---

---

## WARRANTY

---

---

Under this warranty Domries' obligation shall be limited to repairing or replacing, free of charge to the original purchaser, any defective part. Each part is subject to our assessment, and must show evidence of a manufacturing defect.

Product will be returned to Domries, routed through the dealer from whom the purchase was made. The cost of the repair or replacement shall not be higher than the purchase price of the product, excluding tax, shipping, and installation charges.

A claim for warranty must be made with a Domries Warranty Form with a work order number.

An authorized work order number is **REQUIRED** prior to any field/repair work to be done by Domries.

### RETURN GOODS

Domries reserves the right of requiring the prepaid return of any parts claimed to be defective. However, **NO** parts shall be returned **without** Domries warranty form with a work order number. Goods shall be returned to such location as shall be designated by Domries.

Domries will at its discretion, either repair, replace, or freight outbound product from Domries factory. Domries will inspect all parts for defectiveness in materials and/or workmanship. Wear and tear that is determined to be defective, are subject to an adjustment based upon useful life.

### REPAIR

Domries will not accept any charges other than its direct Dealer shop labor costs and parts required to repair such parts and/or workmanship at the Dealers place of business. The **WARRANTY** specifically excludes any charges for delivery, transportation, and/or shipping costs.

If the dealer is requested by the customer to travel or haul the machine to its shop or repair shop for the purpose of performing a warranty obligation or free inspection, it would be for the customer's convenience, and the cost of such a trip is to be paid by the customer. Any arrangement whereby the Dealer agrees to absorb all or a part of the cost is to be made **SOLELY** between the Dealer and the Customer (to be considered a courtesy to the customer by their Dealer).

### LIMITED WARRANTY

Outside purchased equipment and accessories (not of Domries manufacture) are warranted only to the extent of the original manufacturer's warranty to Domries. Examples of limited items include, Hydraulic cylinders and hoses, Bearings, Disc Blades, Wheels, Tires, Tubes, and Seals.

**NO WARRANTY**

1. New product that has been subjected to operation in excess of recommended capacities, misused, negligence, lack of maintenance, an accident or have been ***altered/repared in any manner not authorized by Domries.***
2. Sharp turns while machine/cutting parts are in the ground void warranty, with the exception of a drag disc.

Domries shall in no event be responsible for any delay or any other consequential or indirect damage in connection with fulfilling any obligation under this WARRANTY.

Domries reserves the right to make change at any time in designs, materials and/or specifications of its product without becoming liable or obligated in any way to make similar changes in previously manufactured products.

This ***WARRANTY IS IN LIEU OF ALL OTHER WARRANTIES COVERING DOMRIES PRODUCTS*** and no other warranties expressed or implied are made or authorized by Domries Enterprises, Inc.

**DEALER/SALESMAN:** \_\_\_\_\_ **DATE:** \_\_\_\_\_

**DOMRIES REP.:** \_\_\_\_\_ **DATE:** \_\_\_\_\_