

H.W.O. SERIES

**PARTS
AND
OPERATER
MANUAL**

**HEAVY
DUTY
LOW
PROFILE
FOR
ORCHARD
AND
OPEN
FEILD**

Domries Enterprises, Inc

12281 Rd 29

Madera, California 93638

Phone (559) 673-9143

Fax (559) 673-4110

Visit our Web-Site at www.domriesentinc.com

IMPORTANT! PLEASE READ!

TO OUR CUSTOMER – USER’S RESPONSIBILITY- WARRANTY

TO OUR CUSTOMER

The following pages and illustrations are printed to help supply you with the knowledge to better operate and service your new DOMRIES equipment.

We are proud to have you as a customer and feel you will be proud to be a DOMRIES owner.

Any piece of equipment needs and must have a certain amount of service and maintenance to keep it in top running condition. We have attempted to cover all the adjustments required to fit most conditions; however, there may be times special care must be taken to fit a condition.

Study this operator’s manual carefully and become acquainted with all the adjustments and operating procedures before attempting to operate your new equipment. Remember, it is a machine and has been designed and tested to do an efficient job in most operating conditions and will perform in relation to the service it receives.

If special attention is required for some conditions, ask your DOMRIES dealer; his Parts and Service Organization will be glad to help and answer any question on operation and service of your new machine.

ATTENTION! BECOME ALERT!

YOUR SAFETY IS INVOLVED

This symbol is used to call your attention to safety precautions that should be followed by the operator to avoid accidents. When you see this symbol – Heed Its Warning.

USER’S RESPONSIBILITY

It is the responsibility of the user to read the Operator’s Manual and understand the safe and correct operating procedures as pertains to the operation of the product, and to lubricate and maintain the product according to the maintenance schedule in the Operator’s Manual.

The user is responsible for inspecting his machine and for having parts repaired or replaced when continued use of the product would cause damage or excessive wear to the other parts. It is the user’s responsibility to deliver his machine to a DOMRIES dealer, for service or replacement of defective parts which are covered by the standard warranty. When requesting warranty service, you present your copy of delivery record.

MODEL# _____

SERIAL# _____



ATTENTION! BECOME ALERT!

YOUR SAFETY IS INVOLVED!

This Symbol is used to call your attention to safety precautions. That should be followed by the operator to avoid accidents. When you see this – Heed Its Warning.

Many hours of lost time and much suffering is caused by the failure to practice simple safety rules.

1. **READ** this manual carefully to acquaint your – self with the Disk Harrow. Opening unfamiliar equipment can cause accidents.
2. **Lower Implement** if possible, when adjusting maintenance work; otherwise **BLOCKS IT SECURELY** at a workable height.
3. **When Implement** and tractor is parked always lower disk to the ground and place a **FLAG OR OTHER WARNING DEVICE** on each corner as someone could run or bump into the implement.
4. Implement should be **DETACHED ONLY** in an area where Children **DO NOT PLAY**.
5. **DO NOT** wear loose fitting clothing that could catch on various parts.
6. Machinery should be **OPERATED ONLY** by those who are **RESPONSIBLE AND DELEGATED** to do so.
7. **ONLY ONE PERSON** – the operator – should be permitted on the tractor when implement is in operation, he should be thoroughly familiar with tractor and implement.
8. **MAKE CERTAIN** that everyone is clear before starting tractor and implement combination.
9. **BEFORE WORKING** under the any hydraulically controlled unit **MAKE SURE** it is **SECURELY BLOCKED**.
10. **The RATE OF SPEED** on hillsides or curves should be regulated so there is no danger of tipping.
11. **DO NOT** drive too close to the edge of a ditch or creek.
12. **REDUCE SPEED** when transporting unit to avoid bouncing and momentary loss of steer ability.
13. **MAKE CERTAIN** tractor is equipped with sufficient front-end weight to counter-balance the plow weight and maintain stability of front of tractor
14. **DO NOT** attempt to operate tractor and implement unless you are in the driver seat.
15. **ALWAYS** place transmission in **PARK or NEUTRAL, LOCK BRAKES, STOP ENGINE AND REMOVE START KEY** before dismounting from the tractor.
16. **NEVER** stand between tractor and disc when hitching.
17. **PROVIDE** a first aid kit. Treat all scratches, cuts, etc. with proper antiseptic immediately.
18. If **DECALS** become damaged or come off, they should be replaced immediately.
19. **REMEMBER** that safe operation is no accident.

ON HIGHWAY OPERATION

1. Use the **SLOW-MOVING** vehicle emblem in daytime and approved warning lights at night, or during other periods of poor visibility, to prevent highway accidents.
2. **COMPLY** with Local highway regulation concerning moving machinery on highways.
3. **MAINTAIN** complete control of machines at all times when traveling on the highway
4. Due to the width of implement, **USE EXTRA CAUTION** on highways, far lanes and when approaching gates

**HWO
SERIES**



**WHEEL TYPE
OFFSET DISC HARROW**

**HEAVY DUTY
LOW PROFILE**



**ORCHARD &
OPEN FIELD**



DOMRIES ENTERPRISES, INC

12281 Road 29

Madera, California 93638

Office (559) 673-9143 Fax (559) 673-4110

Visit our website @ www.domries.com



HWO SPECIFICATIONS

MODEL	WIDTH	NO. BLADES	BLADE SIZE	SPACING	APPROX. WT. LBS.
HWO 5320	5'3"	14	24"	9"	2160
HWO 6020	6'0"	16	22"	9"	2240
HWO 6040	6'0"	16	24"	9"	2170
HWO 6920	6'9"	18	22"	9"	2210
HWO 6940	6'9"	18	24"	9"	2310
HWO 7620	7'6"	20	22"	9"	2510
HWO 7640	7'6"	20	24"	9"	2610
HWO 8320	8'3"	22	22"	9"	2780
HWO 8340	8'3"	22	24"	9"	2890
HWO 9020	9'0"	24	22"	9"	3040
HWO 9040	9'0"	24	24"	9"	3160
HWO 9940	9'9"	26	24"	9"	3397
HWO 10640	10'6"	28	24"	9"	4145
HWO 12040	12'0"	32	24"	9"	4430

NOTE. SEE PRICE SHEET FOR NOTCHED AND SMOOTH BLADES COMBINATIONS OFFERED.

OPTIONS

SPLIT AXLE ADJUSTMENT-ON 6'0" TO 9'9" SIZE

BEARINGS-TRIPLE SEALED BALL BEARINGS SELF ALIGNING

TIRES-7.60 X 15 - 6 PLY RIBBED /DUAL TIRES ON 10'6" AND 12'0"

GANG RODS- 1 1/2" SQ. PLOW STEEL

HYD. CYLINDER-HI PRESSURE 3" X 10"

GANG SETTING- REAR GANG SET LEFT OR RIGHT
BY PULLING OR BACKING TRACTOR

DEPTH SETTING - SET BAR WITH 19 DEPTH SETTINGS HOLES

CONSTRUCTION- MAIN FRAME AND GANG FRAMES, HEAVY ANGLE IRON
BRACED AND WELDED FOR MAXIMUM STRENGTH AND RIGIDITY

OPTIONAL

CLEANERS- DOUBLE BAR CONSTRUCTION

ADD-A-BLADE EXTENSIONS

DIRT SHIELDS

TOW HITCH-SINGLE LIP OR CLEVIS TYPE

DOMRIES ENTERPRISES, INC

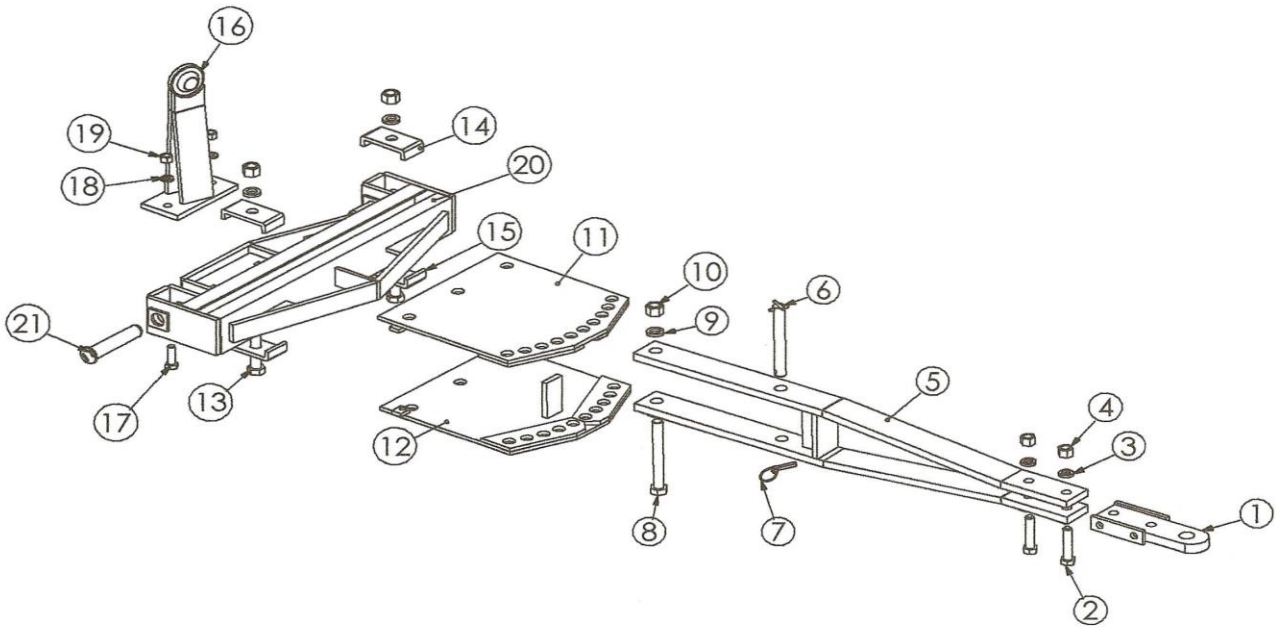
12281 Road 29

Madera, California 93638

Office (559) 673-9143 Fax (559) 673-4110

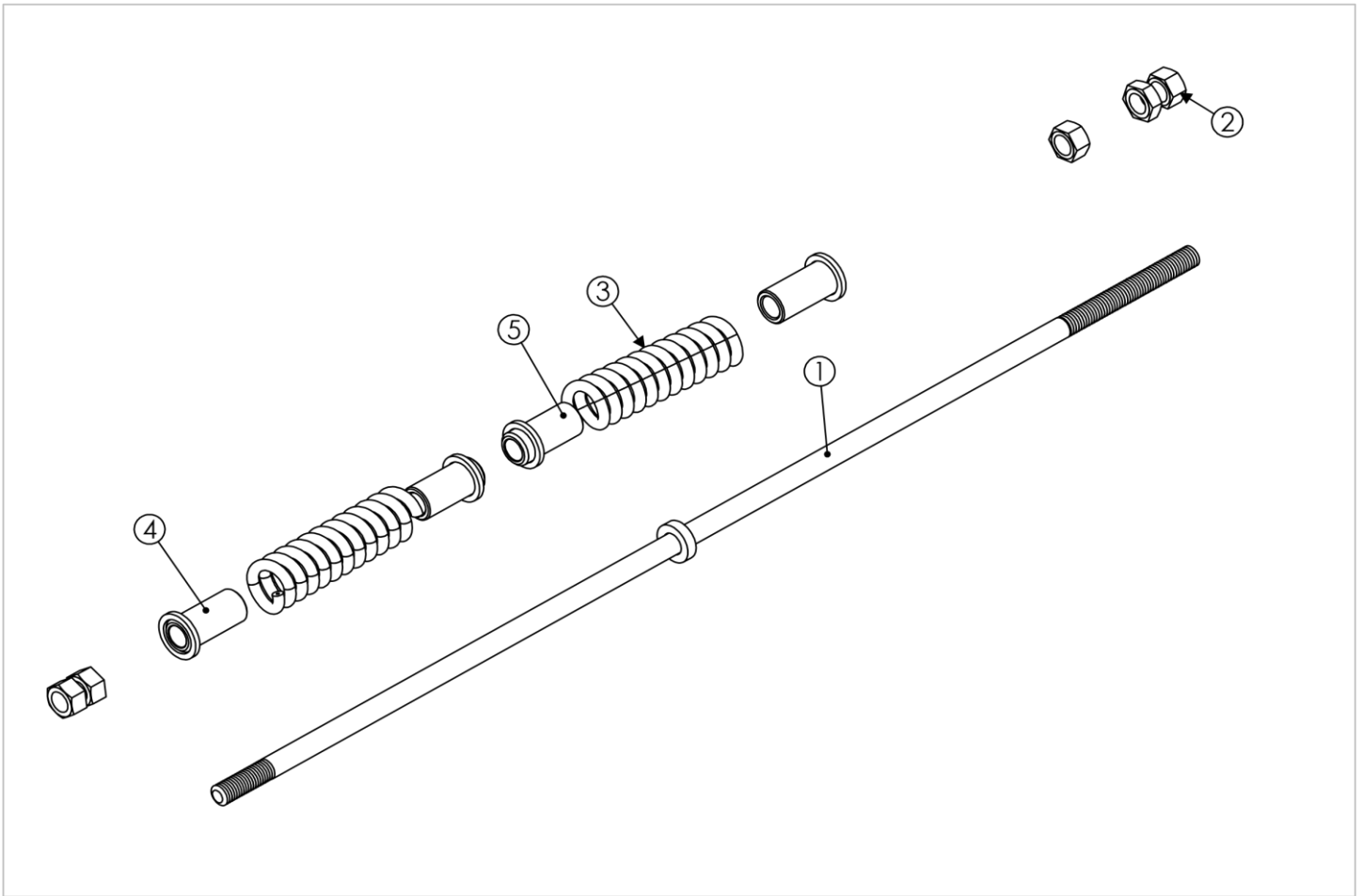
Visit our website @ www.domries.com





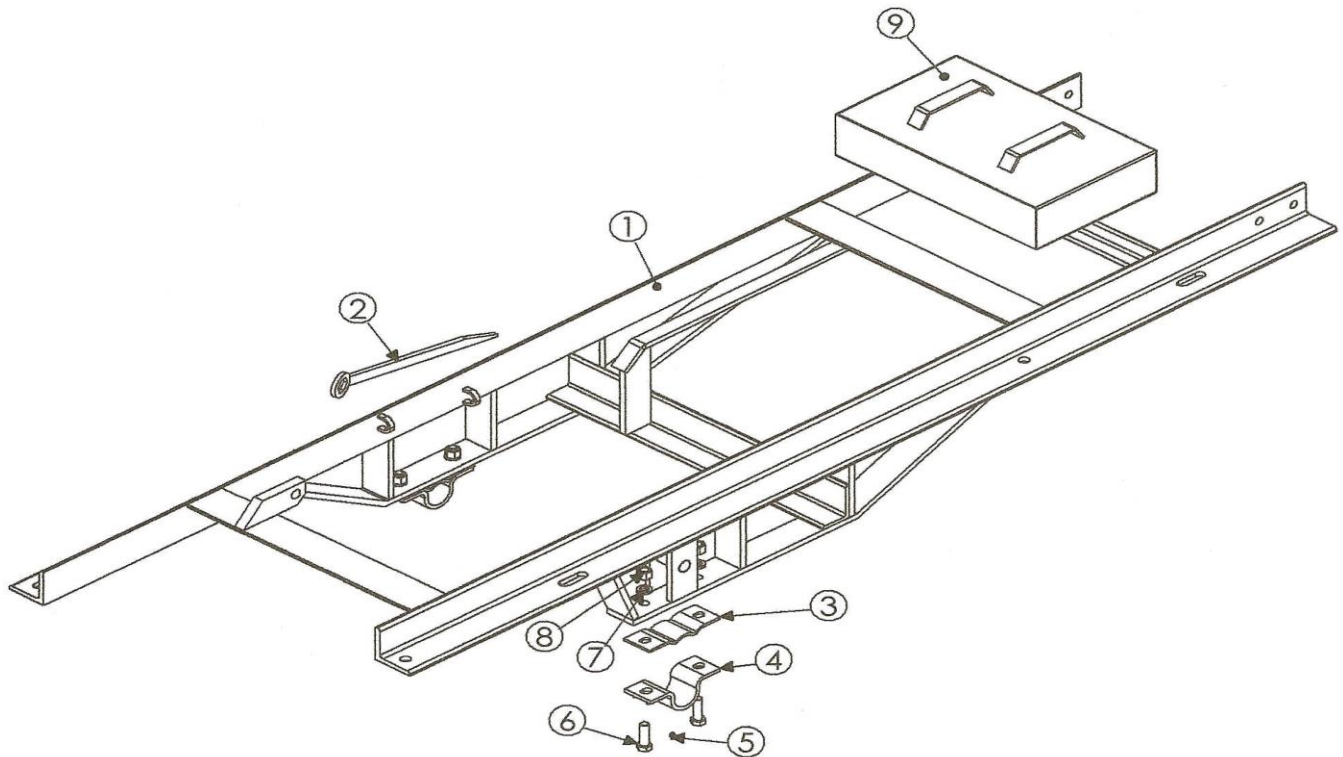
DRAW BAR, HITCH

REF #	PART #	DESCRIPTION	APPROX WT.
1	W1072	TONGUE	10.0
2	CS34312-5	BOLT - 3/4" NC. X 3 1/2" LG. GR. 5	N/A
3	LW34	LOCK WASHER - 3/4"	N/A
4	N34	NUT - 3/4"	N/A
5	W1070	DRAW BAR - 5'3" TO 9'9"	61.0
6	W1064	PIN - HITCH ANGLE SET	N/A
7	BLD-33	KLICK PIN - 7/16"	N/A
8	CS78712-5	BOLT - 7/8" NC. X 7 1/2" LG. GR. 5	N/A
9	LW78	LOCK WASHER - 7/8"	N/A
10	N78	NUT - 7/8"	N/A
11	W1062	PIVOT PLATE - TOP	30.3
12	W1063	PIVOT PLATE - BOTTOM	32.6
13	CS786-5	BOLT - 7/8" NC. X 6" LG. GR. 5	N/A
14	W1068	CLIP - CLAMP	1.5
15	W1069	CLIP - CLAMP, WELDED	1.7
16	W1120	BRACKET - FRONT	20.0
17	CS582-5	BOLT - 5/8" NC. X 2" LG.	N/A
18	LW58	LOCK WASHER - 5/8"	N/A
19	N58	NUT - 5/8"	N/A
20	W1057	CROSS MEMBER - 5'3"	N/A
	W1058	CROSS MEMBER - 6'0"	N/A
	W1050	CROSS MEMBER - 6'9"	N/A
	W1060	CROSS MEMBER - 7'6" TO 9'9"	N/A
21	W1039	PIN - CROSS MEMBER	N/A



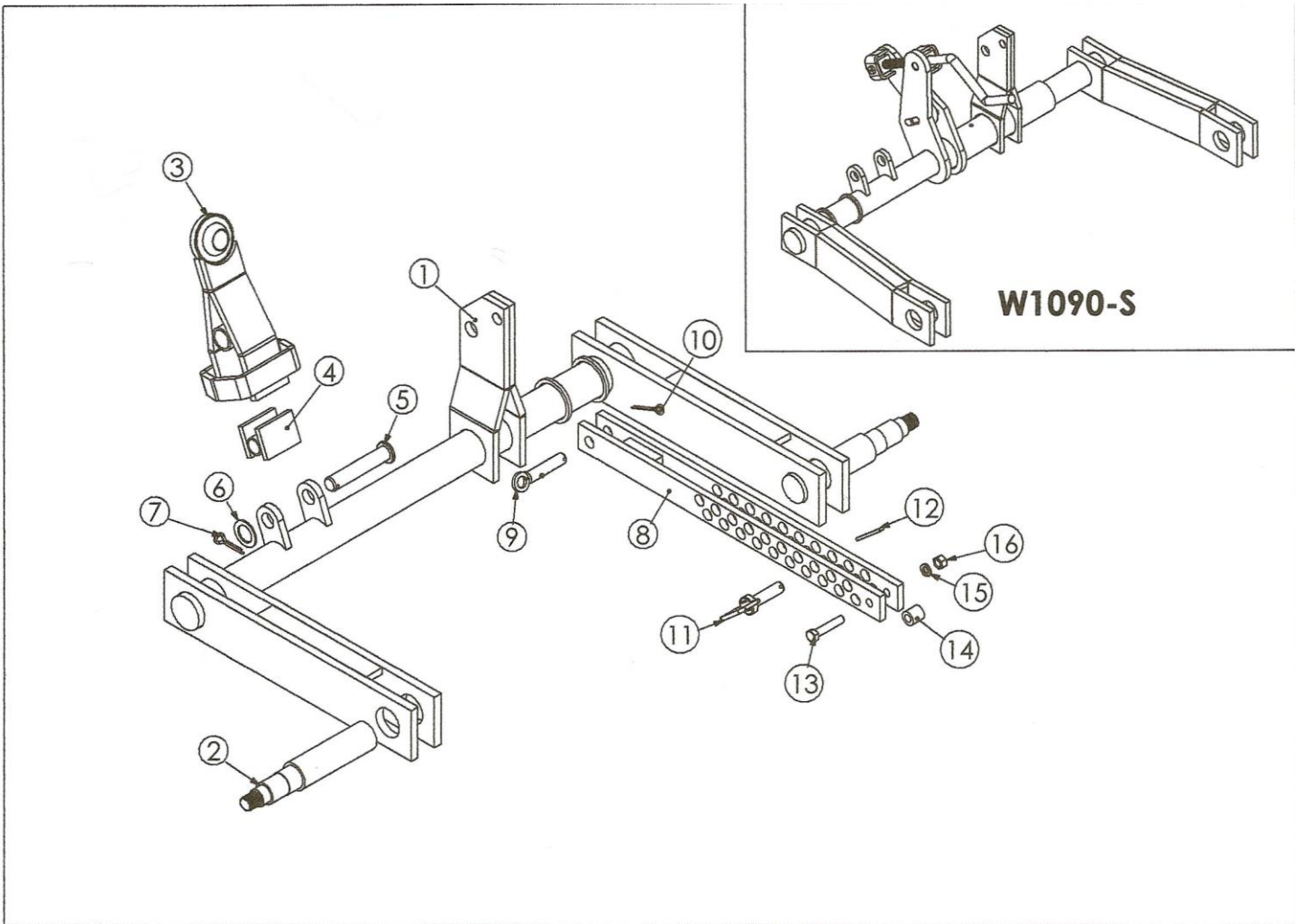
LEVELING ROD ASSEMBLY

REF #	PART #	DESCRIPTION	APPROX WT.
1	W112	LEVELING ROD 5'3" TO 9'9"	13.0
2	N1	NUT - 1" NC.	0.1
3	W1124	SPRING	3.3
4	W1133	COLLAR - SINGLE, SPRING	1.5
5	W1134	COLLAR - DOUBLE, SPRING	1.5



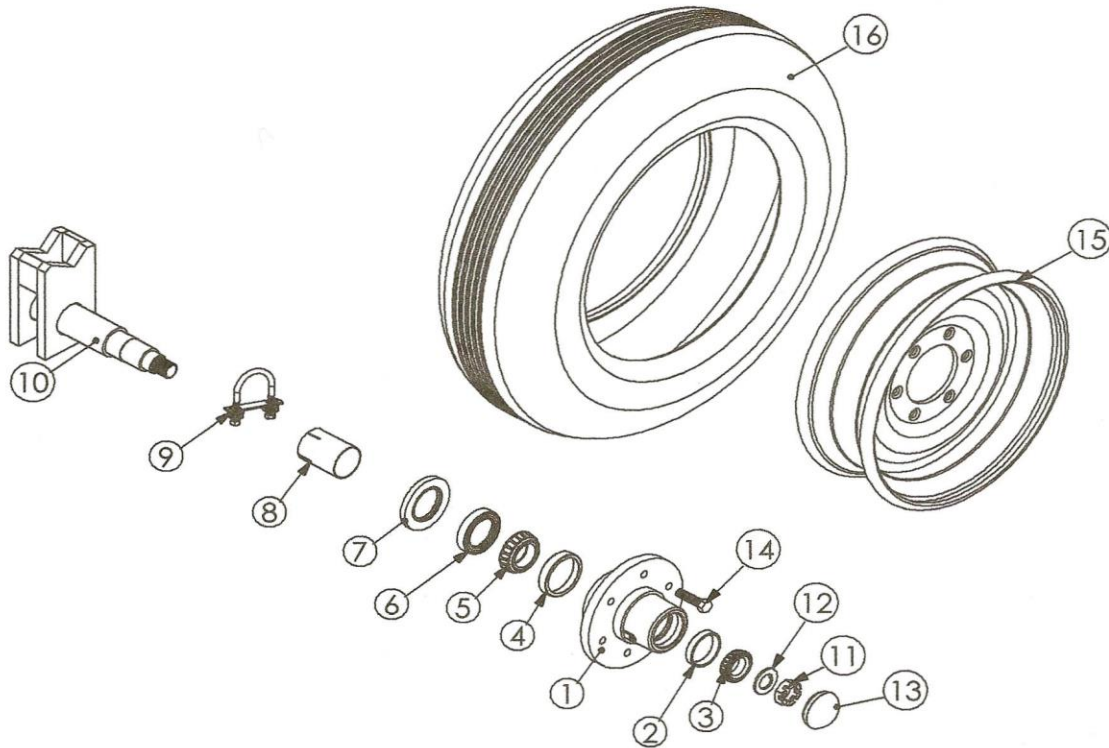
HWO - MAIN FRAME

REF #	PART #	DESCRIPTION	APPROX WT.
1	W1001	MAIN FRAME - 5'3" TO 9'9"	490.0
2	W1011	WRENCH - 7/8" BOLT	2.6
3	W1093	CLAMP - TOP (5'3" TO 9'9")	1.7
4	W1095	CLAMP - BOTTOM (5'3" TO 9'9")	3.6
5		GREASE KERK	N/A
6	CS34212-5	BOLT - 3/4" NC. X 2 1/2" LG.	N/A
7	LW34	LOCK WASHER - 3/4"	N/A
8	N34	NUT - 3/4"	N/A
9	W1007	WEIGHT BOX 5'3" TO 9'9"	150.0



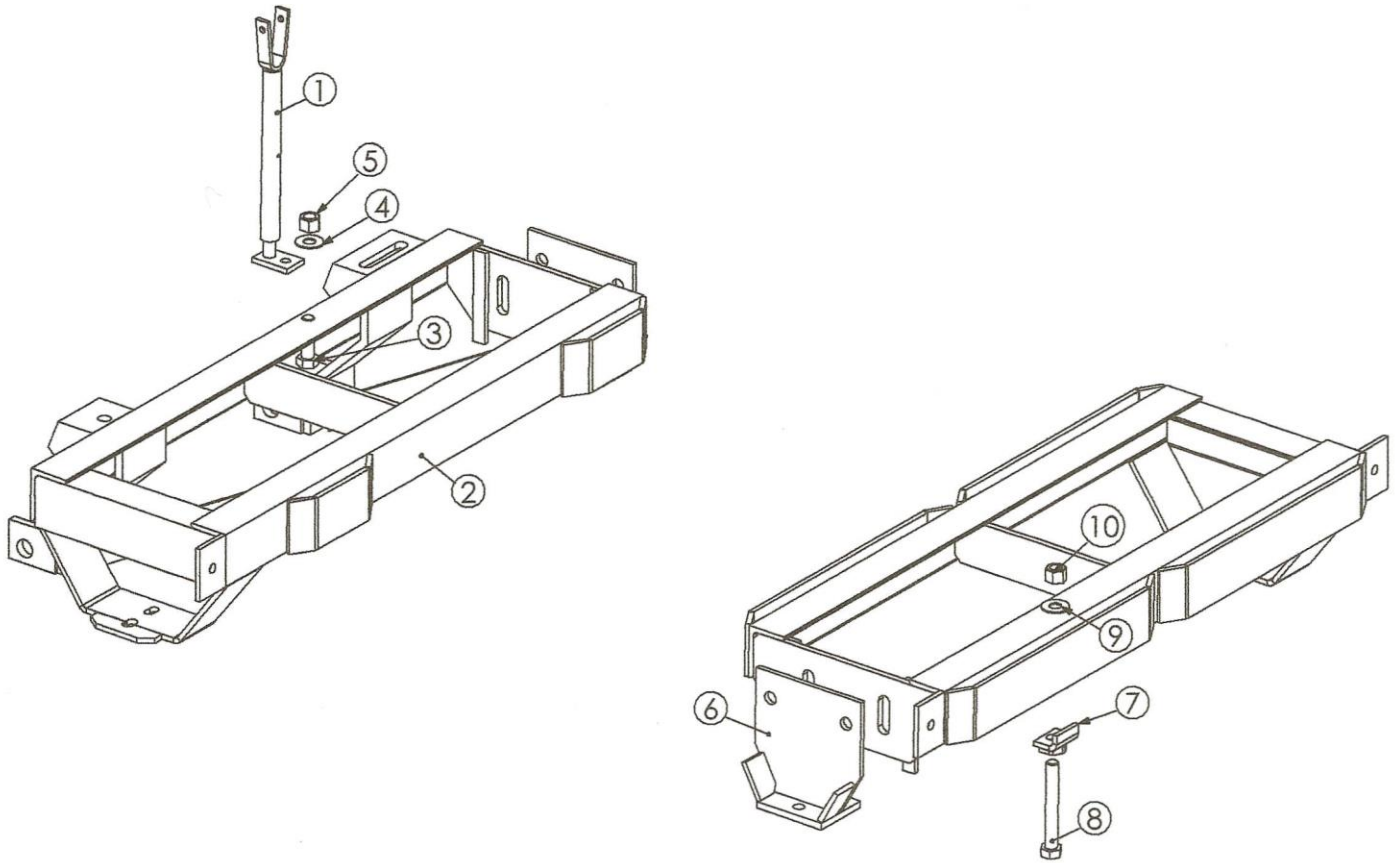
AXLE ASSEMBLY

REF #	PART #	DESCRIPTION	APPROX WT.
1	W1056	AXLE WELDMENT - SINGLE (5'3")	202.0
	W1090-S	AXLE ASSY. - ADJ., SPLIT TYPE	220.0
2	DSH-312-W	SPINDLE	N/A
3	W1121	REAR BRACKET - 5'3" TO 9'9"	13.0
4	W1107	BRACKET - ROCKER	1.9
5	W1108	PIN - ROCKER (1" X 5")	N/A
6	FW114S	FLAT WASHER - 1 1/4" NOM, SAE.	N/A
7	CP14134	COTTER PIN - 1/4" X 1 3/4" LG.	N/A
8	W1098	BAR - DEPTH SET, 5'3" TO 9'9"	13.0
9	W1101	PIN - ANCHOR, DEPTH SET BAR	N/A
10	CP3162	COTTER PIN - 3/16" X 2" LG.	N/A
11	W1100	PIN - DEPTH SET	N/A
12	HP6	COTTER - HAIR PIN TYPE #6	N/A
13	CS12212-5	BOLT - 1/2" NC. X 2 1/2" LG. GR. 5	N/A
14	W1106	SPACER - DEPTH SET BAR	N/A
15	LW12	LOCK WASHER - 1/2"	N/A
16	N12	NUT - 1/2"	N/A



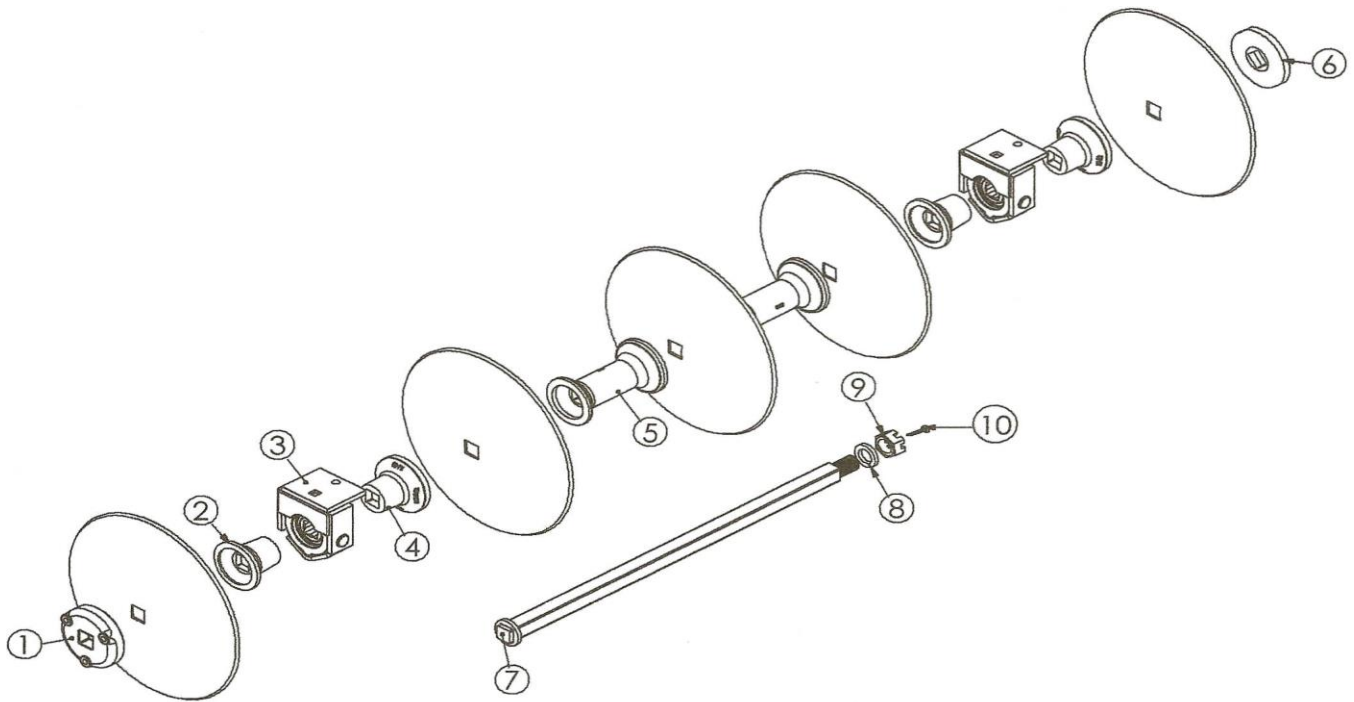
HWO-SPINDLE ASSEMBLY

REF #	PART #	DESCRIPTION	APPROX WT.
1	DSH-302	HUB	10.0
2	DSH-303	BEARING CUP, OUTER	0.1
3	DSH-304	BEARING CONE, OUTER	0.3
4	DSH-307	INNER SEAL	0.1
5	DSH-305	BEARING CUP, INNER	0.2
6	DSH-306	BEARING CONE, INNER	0.4
7	DSH-308	OUTER SEAL	0.1
8	DSH-309	TUBING SLEEVE	0.3
9	DSH-310	CLAMP ASSY.	0.3
10	DSH-312-W	WELD ON SPINDLE	9.0
11	DSH-313	SLOTTED NUT	0.1
12	DSH-314	SPINDLE WASHER	0.01
13	DSH-316	DUST CAP	0.2
14	DSH-318	LUG BOLT - (1/2" NF X 1" LG.)	0.1
15	JJ-19	WHEEL-15 X 6, 6 (1/2)	23.0
16	JJ-20	TIRE - 7.60-15, RIB 6 PLY	24.0



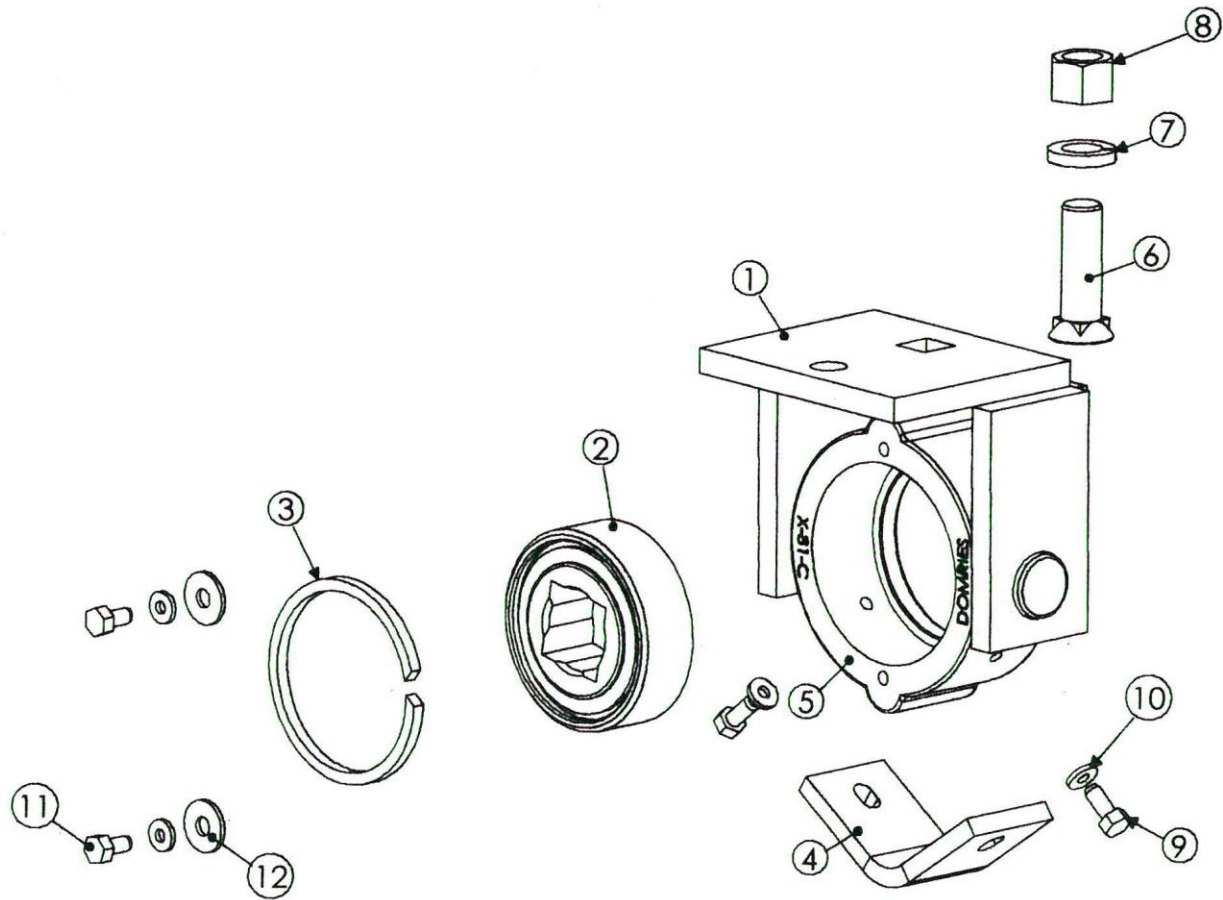
GANG FRAME ASSEMBLY

REF #	PART #	DESCRIPTION	APPROX WT.
1	W1005	HOSE GUIDE	3.0
2	W1054	FRONT GANG FRAME - 5'3"	170.0
	W1055	FRONT GANG FRAME - 6'0"	220.0
	W1020	FRONT GANG FRAME - 6'9"	270.0
	W1021	FRONT GANG FRAME - 7'6"	320.0
	W1022	FRONT GANG FRAME - 8'3"	370.0
	W1023	FRONT GANG FRAME - 9'0"	420.0
	W1051	FRONT GANG FRAME - 9'9"	470.0
3	CS783-5	BOLT - 7/8" NC. X 3" LG.	N/A
4	W1029	FLAT WASHER - 7/8"	N/A
5	N78H	NUT - 7/8" HEAVY	N/A
6	W1026	BRG. BRACKET - BOLT ON (5'3" ONLY)	12.7
7	W1036	CLIP - FRAME CLAMP	0.9
8	CS78612-5	BOLT - 7/8" NC. X 6 1/2" LG.	N/A
9	W1029	FLAT WASHER - 7/8"	N/A
10	N78H	NUT - 7/8" HEAVY	N/A
11	W1052	REAR GANG FRAME - 5'3"	233.0
	W1053	REAR GANG FRAME - 6'0"	256.0
	W1030	REAR GANG FRAME - 6'9"	279.0
	W1031	REAR GANG FRAME - 7'6"	280.0
	W1032	REAR GANG FRAME - 8'3"	303.0
	W1033	REAR GANG FRAME - 9'0"	326.0
	W1059	REAR GANG FRAME - 9'9"	368.0



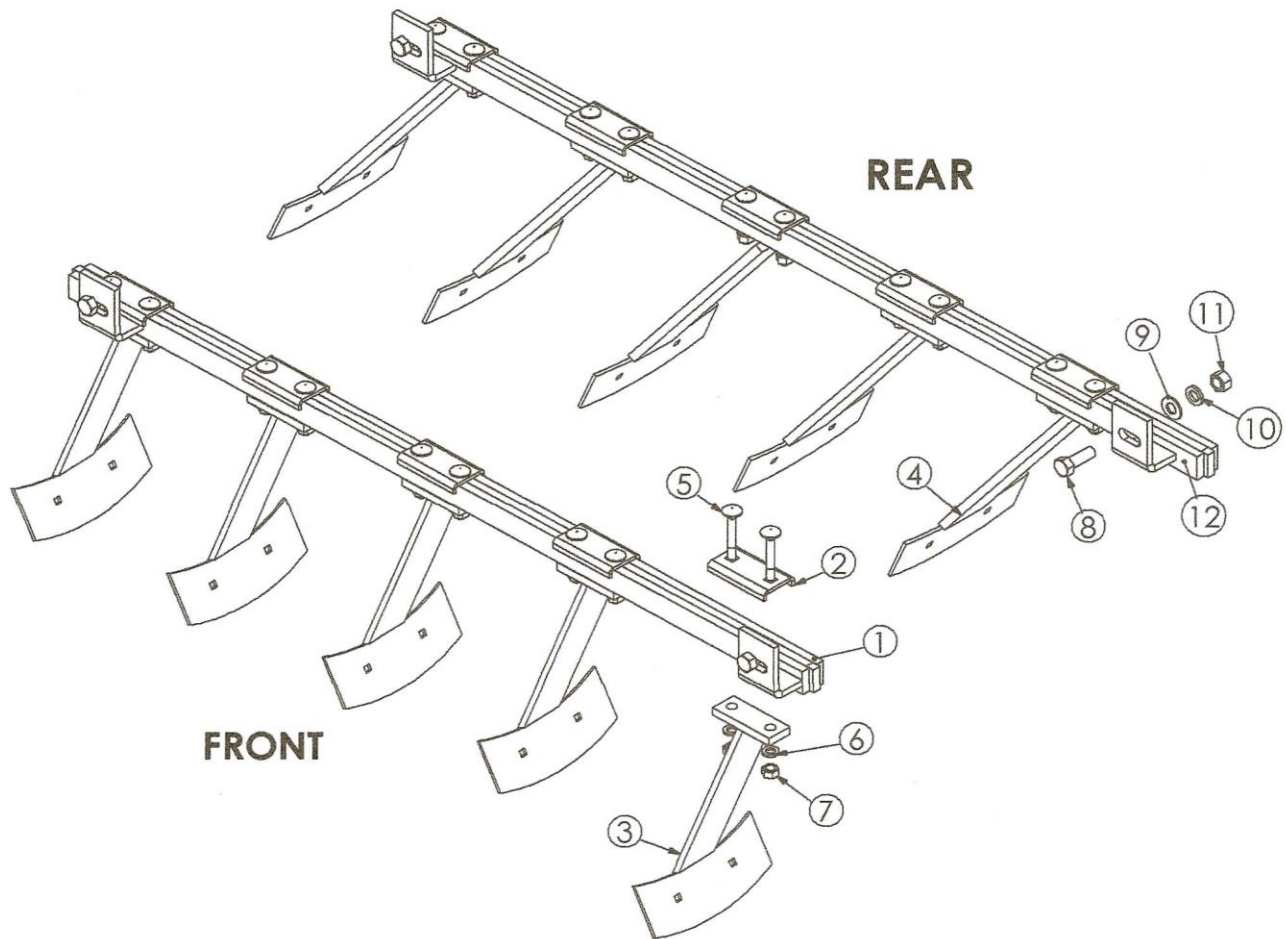
GANG ASSEMBLY

REF #	PART #	DESCRIPTION	APPROX WT.
1	JXE-19	EXT. WASHER - CCV., 1 1/2" SQ. (OUTSIDE OF BLADE)	N/A
	JXE-18	EXT. WASHER - CVX, 1 1/2" SQ. (INSIDE OF BLADE)	9.0 LBS.
2	XJ-84	HALF SPOOL - CVX, 1 1/2" SQ.	N/A
3	X-80-A-KIT	BEARING ASSEMBLY - 1 1/2" SQ.	N/A
4	XJ-83	HALF SPOOL - CCV., 1 1/2"	N/A
5	X-90	SPACER SPOOL - 1 1/2" SQ., 9" SPACING	12.0 LBS.
6	X-98	STEEL WASHER - UNIVERSAL	N/A
7	XGR-5	GANG ROD - 5 BLADE, 1 1/2" SQ. 41 1/4" LG.	N/A
	XGR-6	GANG ROD - 6 BLADE, 1 1/2" SQ. 41 1/4" LG.	N/A
	XGR-7	GANG ROD - 7 BLADE, 1 1/2" SQ. 41 1/4" LG.	N/A
	XGR-7L	GANG ROD - 7L BLADE, 1 1/2" SQ. 41 1/4" LG.	N/A
	XGR-8L	GANG ROD - 8L BLADE, 1 1/2" SQ. 41 1/4" LG.	N/A
	XGR-9L	GANG ROD - 9L BLADE, 1 1/2" SQ. 41 1/4" LG.	N/A
8	LW112	LOCK WASHER - 1 1/2"	N/A
9	SN112	SLOTTED NUT - 1 1/2"	N/A
10	CP14212	COTTER PIN - 1/4" X 2 1/2" LG.	N/A



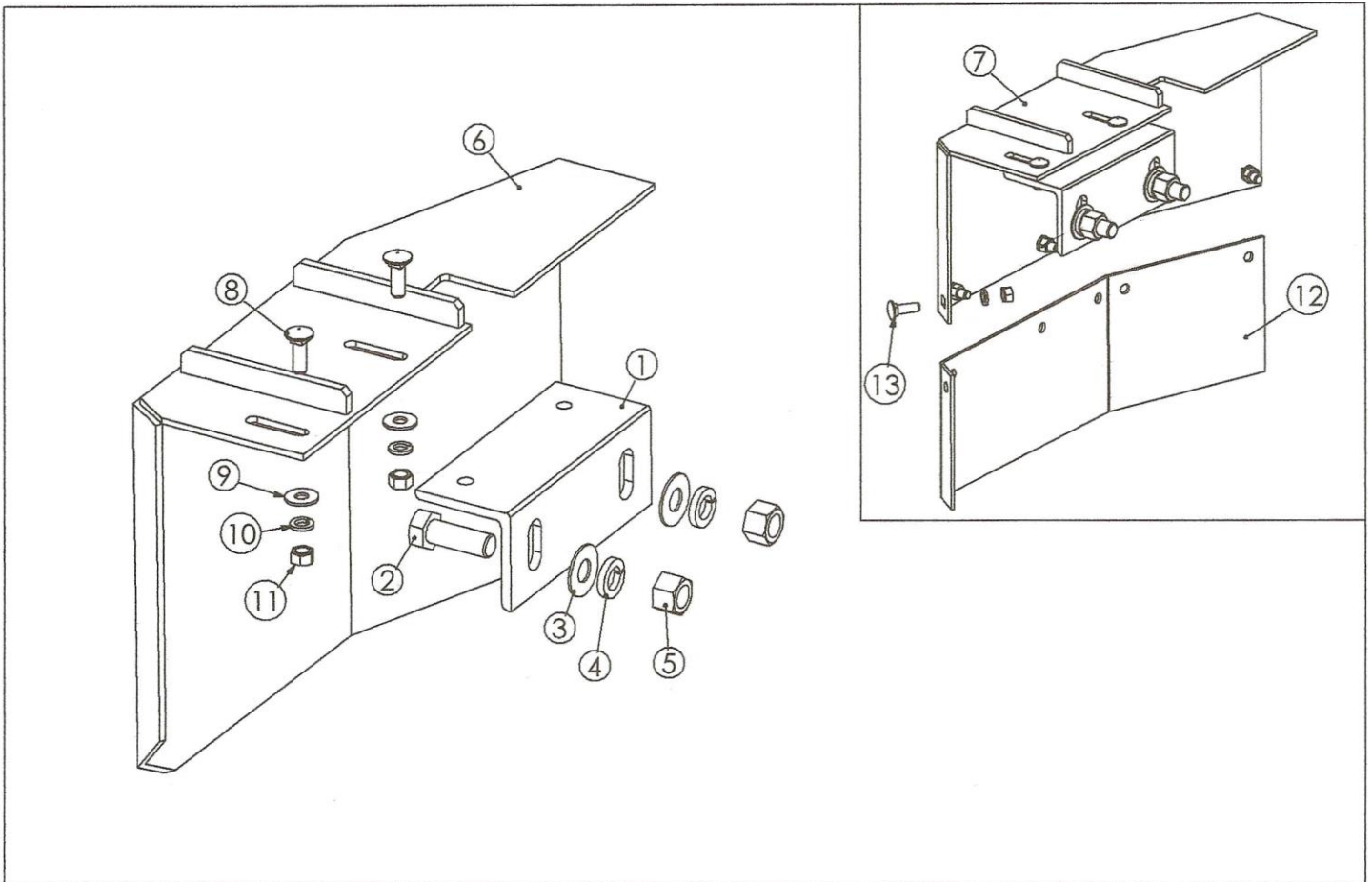
X - 80 - A - KIT

REF #	PART #	DESCRIPTION	APPROX WT.
1	X-81	BEARING HOUSING WELDMENT	12.0 LBS.
2	X-85	BEARING 1 1/2" SQ.	2.0 LBS.
3	X-86	STOP RING	0.2 LBS.
4	K-88	WEAR PLATE	2.0 LBS.
5	X-81-C	BEARING HOUSING CASTING ONLY	5.8 LBS.
6	PB34214-8	PLOW BOLT - 3/4" NC. X 2 1/4" LG. GR. 8	N/A
7	LW34	LOCK WASHER - 3/4"	N/A
8	N34	NUT - 3/4"	N/A
9	CS51634-5	BOLT - 5/16" NC. X 3/4" LG. GR. 5	N/A
10	FW14	FLAT WASHER - 1/4"	N/A
11	CS1658-5	BOLT - 5/16" NC. X 5/8" LG. GR. 5	N/A
12	FW38	FLAT WASHER - 1/4"	N/A



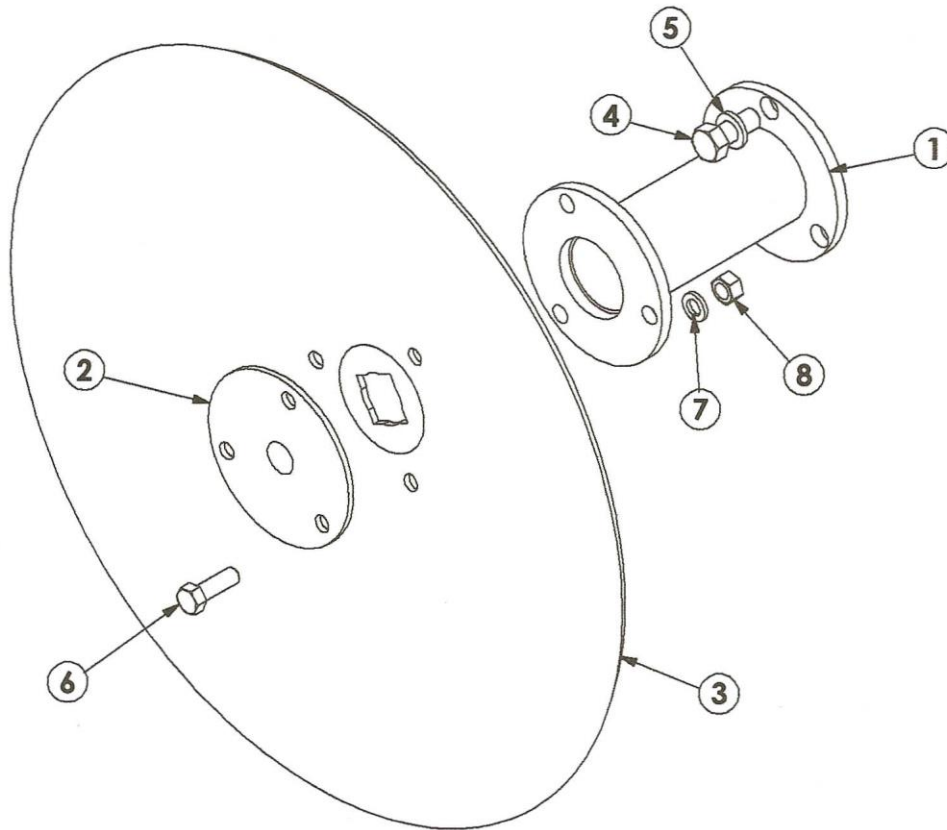
CLEANER ASSEMBLY

REF #	PART #	DESCRIPTION	APPROX WT.
1	WOC-53F	CLEANER BAR - FRONT 5' 3"	N/A
	WOC-60F	CLEANER BAR - FRONT 5' 3"	N/A
	WOC-69F	CLEANER BAR - FRONT 5' 3"	N/A
	WOC-76F	CLEANER BAR - FRONT 5' 3"	N/A
	WOC-83F	CLEANER BAR - FRONT 5' 3"	N/A
	WOC-90F	CLEANER BAR - FRONT 5' 3"	N/A
2	WOC-110	CLAMP - CLEANER ARM	N/A
3	WOC-111	CLEANER ARM - FRONT	N/A
4	WOC-112	CLEANER ARM - REAR	N/A
5	CB123-5	CARRIAGE BOLT - 1/2" NC. X 3" LG. GR. 5	N/A
6	LW12	LOCK WASHER - 1/2"	N/A
7	N12	NUT - 1/2"	N/A
8	CS58134-5	BOLT - 5/8" NC. X 1 3/4" LG. GR. 5	N/A
9	FW58	FLAT WASHER - 5/8"	N/A
10	LW58	LOCK WASHER - 5/8"	N/A
11	N58	NUT - 5/8"	N/A
12	WOC-53R	CLEANER BAR - REAR 5'3"	N/A
	WOC-60R	CLEANER BAR - REAR 6'0"	N/A
	WOC-76R	CLEANER BAR - REAR 7'6"	N/A
	WOC-83R	CLEANER BAR - REAR 8'3"	N/A
	WOC-90R	CLEANER BAR - REAR 9'0"	N/A



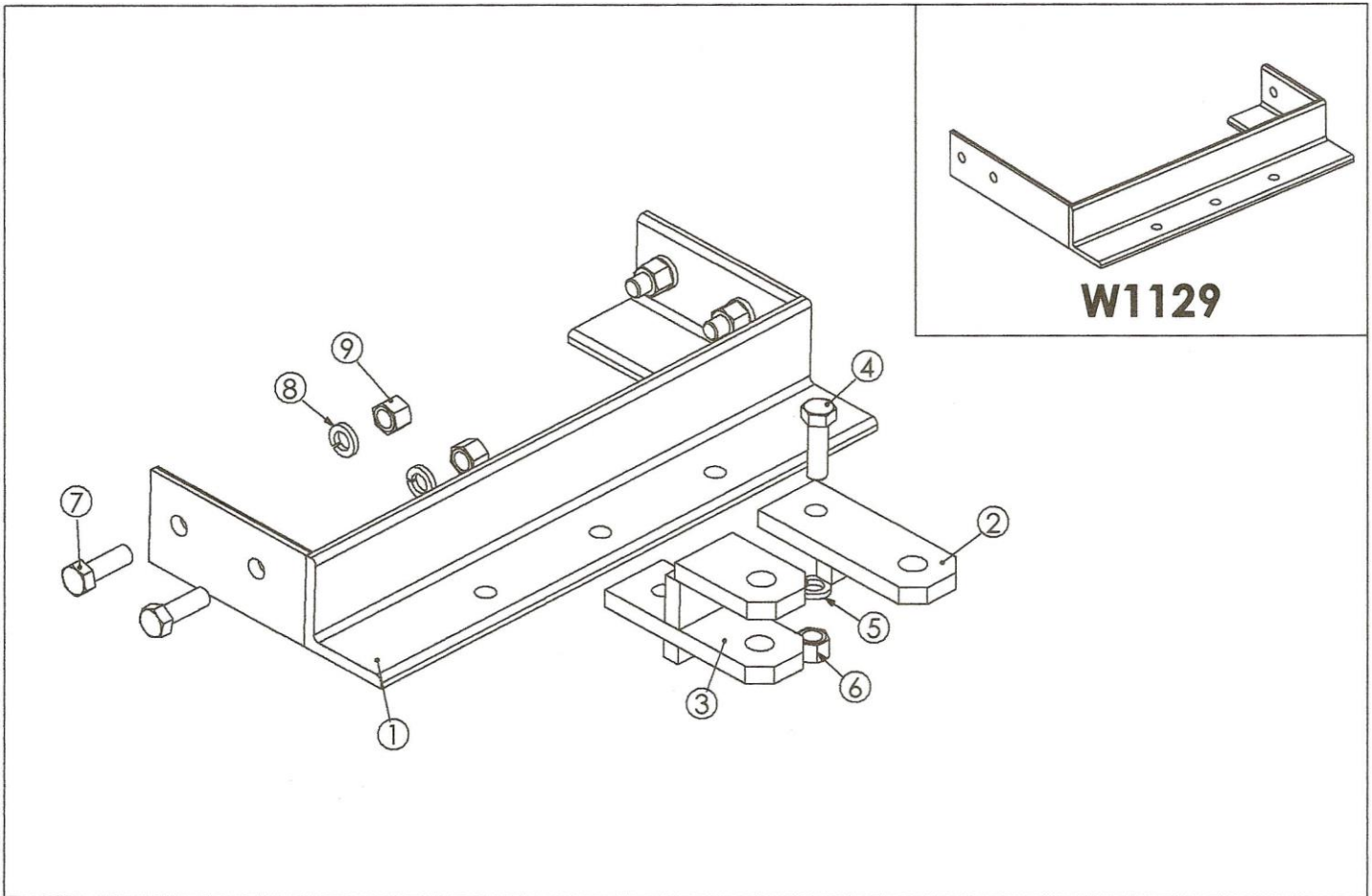
DIRT SHIELD ASSEMBLY

REF #	PART #	DESCRIPTION	APPROX WT.
1	W1132	ANGLE BRACKET DIRT SHIELD	N/A
2	CS78212-5	BOLT - 7/8" NC. X 2 1/2" LG.	N/A
3	FW78	FLAT WASHER - 7/8"	N/A
4	LW78	LOCK WASHER - 7/8"	N/A
5	N78	NUT - 7/8"	N/A
6	W1130	DIRT SHIELD - RIGHT FRONT	N/A
	W1131	DIRT SHIELD - LEFT REAR	N/A
7	W1130-B	DIRT SHIELD - RIGHT FRONT, BELTED (OPTIONAL)	N/A
	W1131-B	DIRT SHIELD - LEFT REAR, BELTED (OPTIONAL)	N/A
8	CB12112-5	CARRIAGE BOLT - 1/2" X 1 1/2" LG.	N/A
9	FW12	FLAT WASHER - 1/2"	N/A
10	LW12	LOCK WASHER - 1/2"	N/A
11	N12	NUT - 1/2"	N/A
12	W-RB	RUBBER BELT - BELTED DIRT SHIELDS	N/A
13	CB12112-5	CARRIAGE BOLT - 1/2" X 1 1/2" LG.	N/A



EXTENSION SPOOL ASSEMBLY

REF #	PART #	DESCRIPTION	APPROX WT.
1	JXE-16	EXT. SPOOL - (BLADE THROWS OUT) 9"	12.0
	JXE-17	EXT. SPOOL - (BLADE PULL IN) 9"	2.0
2	JXE-20	END CAP - UNIVERSAL	0.2
3	DISC BLADE	BLADE SIZE ON DISC	2.0
4	CS58134-5	BOLT - 5/8" NC. X 1 3/4" LG. GR. 5	5.8
5	LW58	LOCK WASHER - 5/8"	N/A
6	CS12112-5	BOLT - 1/2" NC. X 1 1/2" LG. GR. 5	N/A
7	LW12	LOCK WASHER - 1/4"	N/A
8	N12	NUT - 1/2"	N/A



TOW HITCH ASSEMBLY

REF #	PART #	DESCRIPTION	APPROX WT.
1	W1129-S	TOW HITCH FRAME - STANDARD (MADE AFTER 12/07)	18.0
	W1129	TOW HITCH FRAME - OLD STYLE	18.0
2	W1127	TONGUE SINGLE LIP	5.2
3	W1128	TONGUE CLEVIS	N/A
4	CS34212-5	BOLT - 3/4" NC. X 2 1/2" LG. GR. 5	N/A
5	LW34	LOCK WASHER - 3/4"	N/A
6	M34	NUT - 3/4"	N/A
7	CS34214-5	BOLT - 3/4" NC. X 2 1/4" LG. GR. 5	N/A
8	LW34	LOCK WASHER - 3/4"	N/A
9	N34	NUT - 3/4"	N/A



DOMRIES ENTERPRISES, INC.

12281 Road 29, Madera CA 93638 • (P) 559-673-9143 • (F) 559-673-4110

WARRANTY

Under this warranty Domries' obligation shall be limited to repairing or replacing, free of charge to the original purchaser, any defective part. Each part is subject to our assessment, and must show evidence of a manufacturing defect.

Product will be returned to Domries, routed through the dealer from whom the purchase was made. The cost of the repair or replacement shall not be higher than the purchase price of the product, excluding tax, shipping, and installation charges.

A claim for warranty must be made with a Domries Warranty Form with a work order number.

An authorized work order number is **REQUIRED** prior to any field/repair work to be done by Domries.

RETURN GOODS

Domries reserves the right of requiring the prepaid return of any parts claimed to be defective. However, **NO** parts shall be returned **without** Domries warranty form with a work order number. Goods shall be returned to such location as shall be designated by Domries.

Domries will at its discretion, either repair, replace, or freight outbound product from Domries factory. Domries will inspect all parts for defectiveness in materials and/or workmanship. Wear and tear that is determined to be defective, are subject to an adjustment based upon useful life.

REPAIR

Domries will not accept any charges other than its direct Dealer shop labor costs and parts required to repair such parts and/or workmanship at the Dealers place of business. The **WARRANTY** specifically excludes any charges for delivery, transportation, and/or shipping costs.

If the dealer is requested by the customer to travel or haul the machine to its shop or repair shop for the purpose of performing a warranty obligation or free inspection, it would be for the customer's convenience, and the cost of such a trip is to be paid by the customer. Any arrangement whereby the Dealer agrees to absorb all or a part of the cost is to be made **SOLELY** between the Dealer and the Customer (to be considered a courtesy to the customer by their Dealer).

LIMITED WARRANTY

Outside purchased equipment and accessories (not of Domries manufacture) are warranted only to the extent of the original manufacturer's warranty to Domries. Examples of limited items include, Hydraulic cylinders and hoses, Bearings, Disc Blades, Wheels, Tires, Tubes, and Seals.

NO WARRANTY

1. New product that has been subjected to operation in excess of recommended capacities, misused, negligence, lack of maintenance, an accident or have been *altered/repared in any manner not authorized by Domries*.
2. Sharp turns while machine/cutting parts are in the ground void warranty, with the exception of a drag disc.

Domries shall in no event be responsible for any delay or any other consequential or indirect damage in connection with fulfilling any obligation under this WARRANTY.

Domries reserves the right to make change at any time in designs, materials and/or specifications of its product without becoming liable or obligated in any way to make similar changes in previously manufactured products.

This ***WARRANTY IS IN LIEU OF ALL OTHER WARRANTIES COVERING DOMRIES PRODUCTS*** and no other warranties expressed or implied are made or authorized by Domries Enterprises, Inc.

DEALER/SALESMAN: _____ **DATE:** _____

DOMRIES REP.: _____ **DATE:** _____