

MODEL BTO. SERIES 1

**PARTS
AND
OPERATOR
MANUAL**

**Cutting
Widths**

**70"
to
10'0"**

Domries Enterprises, Inc

12281 Rd 29

Madera, California 93638

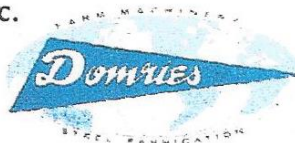
Phone (559) 673-9143

Fax (559) 673-4110

Visit our Web-Site at www.domries.com

Domries Enterprises, Inc.

12281 Road 29
Madera, CA 93637



Phone (559) 673-9143

Fax (559) 673-4110

www.domreisentinc.com

WARRANTY

Domries warrant's all products of its manufacture to be free of defects in material and workmanship under normal usage and maintenance for the period of one year from the date of delivery to the original purchaser.

RETURN GOODS

Domries shall have the option of requiring the prepaid return of any parts claimed defective, however, no parts shall be returned without Domries warranty form with good authorized number. Goods shall be returned to such location as shall be designed by Domries.

Domries will at its option, either repair or replace, F.O.B. Domries factory. Such parts as appear to Domries upon inspection, to have been defective in materials and/or workmanship. Wearing parts that are determined to be defective are subject to an adjustment based upon useful life.

REPAIRS

Any field or repairs must have the authorized repair number from Domries before any work is done. Claim for warranty must be made with a Domries warranty form and repair number.

Domries will not accept any charged other than its direct Dealer shop labor costs and part required to remedy such parts and/or workmanship at its Dealer place of business. The WARRANTY specifically excludes any charges for delivery, transportation, and/or shipping cost.

If the dealer is requested by the customer to travel or haul the machine to his shop or repair shop for the purpose of performing a warranty obligation or free inspection, it would be for the customers' convenience, and the cost of such a trip is to be paid by the customer. Any arrangement whereby the Dealer agrees to absorb all or a part of the cost is to be made between the Dealer and the customer. To be considered a courtesy to the Customer by their Dealer.

LIMITED WARRANTY

Outside purchase equipment and accessories (not of Domries manufacture) are warranted only to the extent of the original manufacturer's warranty to Domries.

Item Limited - Hydraulic cylinders and hose - Bearings - Disc Blades - Wheals - Tires - Tubes - Seals.

No Warranty shall be paid by Domries before the part or parts and labor have been paid to Domries by the manufacturer. Domries shall then compensate the dealer or customer.

NO WARRANTY

(1) New product that has been subjected to operation in excess in recommended capacities, misused, negligence, lack of maintenance or accident or have been altered or repaired in any manner not authorized by Domries.

(2) Sharp turns while machine is ground void warranty, with the exception of a drag disc.

Domries shall in no event be responsible for any delay or any other consequential or indirect damage in connection with fulfilling any obligation under this WARRANTY.

Domries reserves the right to make changes at any time in designs, materials and/or specifications of its product without becoming liable or obligated in any way to make similar changes in previously manufactured products.

This WARRANTY IS IN LIEU OF ALL OTHER WARRANTIES COVERING DOMRIES PRODUCTS and no other Warranties express or implied are made or authorized by Domries Enterprises, Inc.

This WARRANTY BECAME EFFECTIVE with shipments made on or after August 1st 1998

IMPORTANT! PLEASE READ!

TO OUR CUSTOMER – USER’S RESPONSIBILITY- WARRANTY

TO OUR CUSTOMER

The following pages and illustrations are printed to help supply you with the knowledge to better operate and service your new DOMRIES equipment.

We are proud to have you as a customer and feel you will be proud to be a DOMRIES owner.

Any piece of equipment needs and must have a certain amount of service and maintenance to keep it in top running condition. We have attempted to cover all the adjustments required to fit most conditions; however, there may be times special care must be taken to fit a condition.

Study this operator’s manual carefully and become acquainted with all the adjustments and operating procedures before attempting to operate your new equipment. Remember, it is a machine and has been designed and tested to do an efficient job in most operating conditions and will perform in relation to the service it receives.

If special attention is required for some conditions, ask your DOMRIES dealer; his Parts and Service Organization will be glad to help and answer any question on operation and service of your new machine.

ATTENTION! BECOME ALERT!

YOUR SAFETY IS INVOLVED

This symbol is used to call your attention to safety precautions that should be followed by the operator to avoid accidents. When you see this symbol – Heed Its Warning.

USER’S RESPONSIBILITY

It is the responsibility of the user to read the Operator’s Manual and understand the safe and correct operating procedures as pertains to the operation of the product, and to lubricate and maintain the product according to the maintenance schedule in the Operator’s Manual.

The user is responsible for inspecting his machine and for having parts repaired or replaced when continued use of the product would cause damage or excessive wear to the other parts. It is the user’s responsibility to deliver his machine to a DOMRIES dealer, for service or replacement of defective parts which are covered by the standard warranty. When requesting warranty service, you present your copy of delivery record.

MODEL# _____

SERIAL# _____



ATTENTION! BECOME ALERT!

YOUR SAFETY IS INVOLVED!

This Symbol is used to call your attention to safety precautions. That should be followed by the operator to avoid accidents. When you see this – Heed Its Warning.

Many hours of lost time and much suffering is caused by the failure to practice simple safety rules.

1. **READ** this manual carefully to acquaint your – self with the Disk Harrow. Opening unfamiliar equipment can cause accidents.
2. **Lower Implement** if possible, when adjusting maintenance work; otherwise **BLOCKS IT SECURELY** at a workable height.
3. **When Implement** and tractor is parked always lower disk to the ground and place a **FLAG OR OTHER WARNING DEVICE** on each corner as someone could run or bump into the implement.
4. Implement should be **DETACHED ONLY** in an area where Children **DO NOT PLAY**.
5. **DO NOT** wear loose fitting clothing that could catch on various parts.
6. Machinery should be **OPERATED ONLY** by those who are **RESPONSIBLE AND DELEGATED** to do so.
7. **ONLY ONE PERSON** – the operator – should be permitted on the tractor when implement is in operation, he should be thoroughly familiar with tractor and implement.
8. **MAKE CERTAIN** that everyone is clear before starting tractor and implement combination.
9. **BEFORE WORKING** under the any hydraulically controlled unit **MAKE SURE** it is **SECURELY BLOCKED**.
10. The **RATE OF SPEED** on hillsides or curves should be regulated so there is no danger of tipping.
11. **DO NOT** drive too close to the edge of a ditch or creek.
12. **REDUCE SPEED** when transporting unit to avoid bouncing and momentary loss of steer ability.
13. **MAKE CERTAIN** tractor is equipped with sufficient front-end weight to counter-balance the plow weight and maintain stability of front of tractor
14. **DO NOT** attempt to operate tractor and implement unless you are in the driver seat.
15. **ALWAYS** place transmission in **PARK or NEUTRAL, LOCK BRAKES, STOP ENGINE AND REMOVE START KEY** before dismounting from the tractor.
16. **NEVER** stand between tractor and disc when hitching.
17. **PROVIDE** a first aid kit. Treat all scratches, cuts, etc. with proper antiseptic immediately.
18. If **DECALS** become damaged or come off, they should be replaced immediately.
19. **REMEMBER** that safe operation is no accident.

ON HIGHWAY OPERATION

1. Use the **SLOW-MOVING** vehicle emblem in daytime and approved warning lights at night, or during other periods of poor visibility, to prevent highway accidents.
2. **COMPLY** with Local highway regulation concerning moving machinery on highways.
3. **MAINTAIN** complete control of machines at all times when traveling on the highway
4. Due to the width of implement, **USE EXTRA CAUTION** on highways, far lanes and when approaching gates

**BTO 1
SERIES**



**WHEEL TYPE
OFFSET DISC HARROW**



**CUTTING WIDTHS
5'6" TO 10'7"**



DOMRIES ENTERPRISES, INC

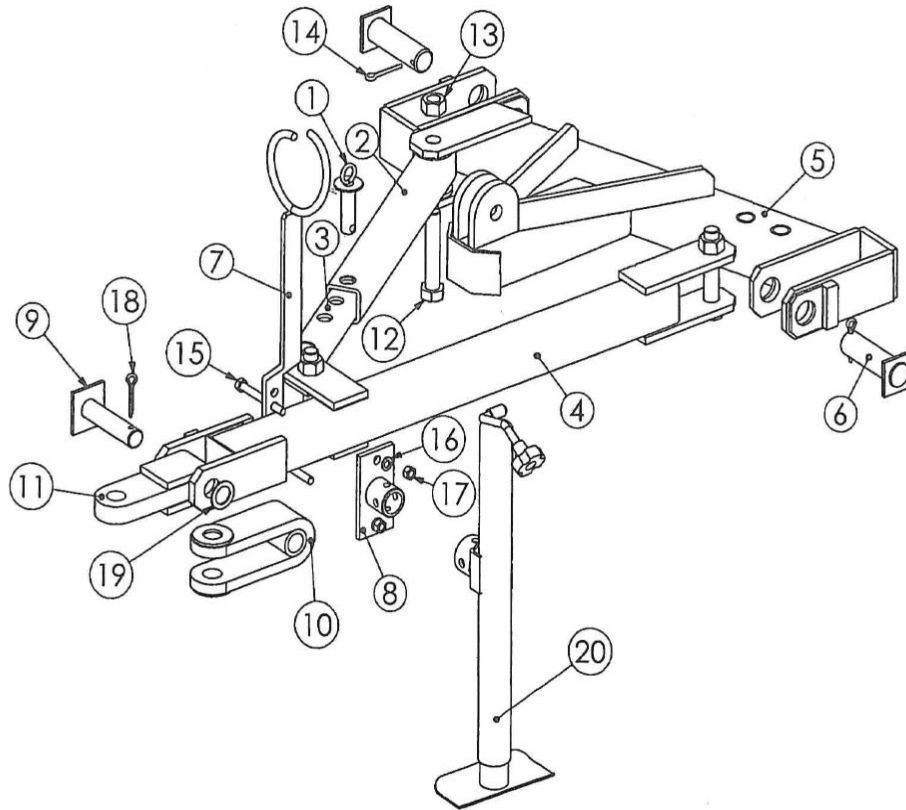
12281 Road 29

Madera, California 93638

Office (559) 673-9143 Fax (559) 673-4110

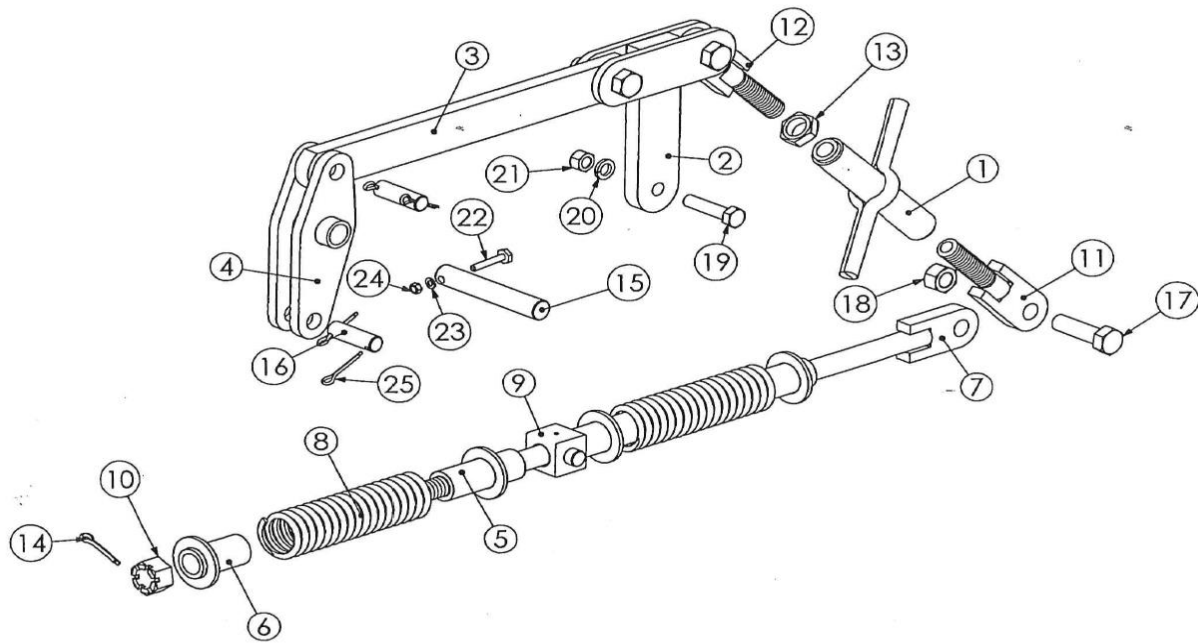
Visit our website @ www.domries.com





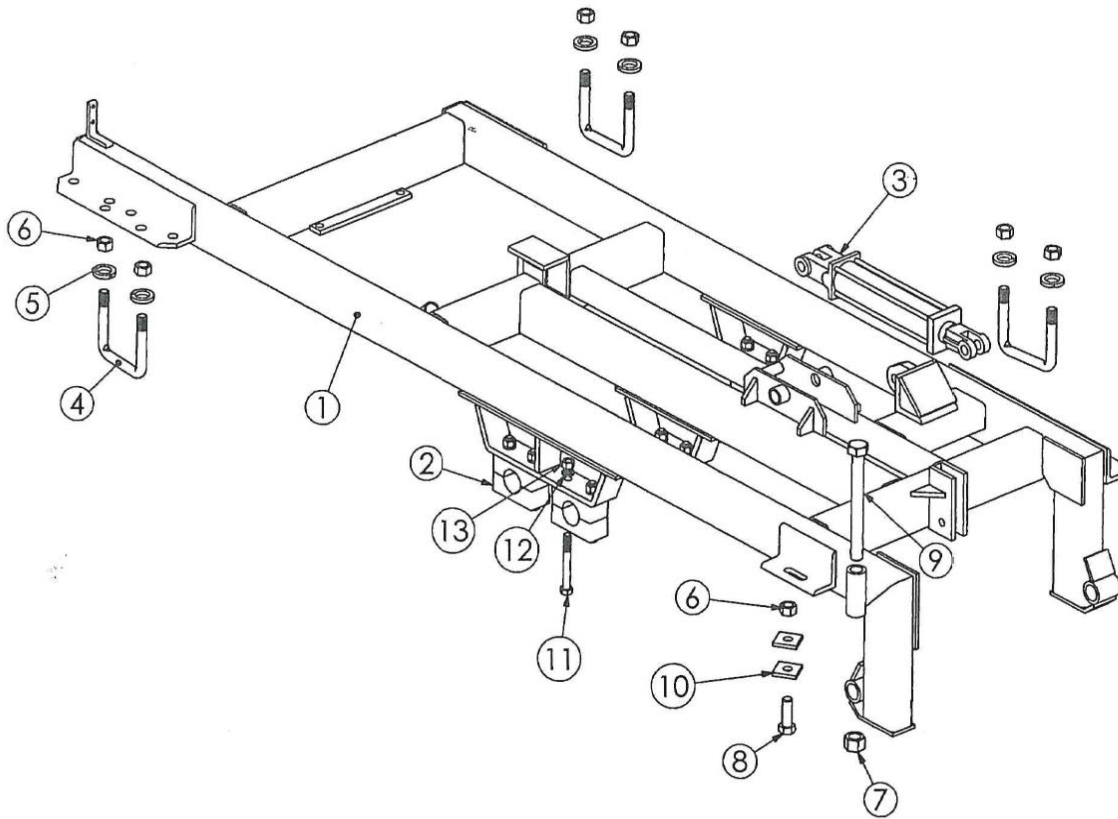
HITCH ASSEMBLY

REF #	PART #	DESCRIPTION	WT/LB.
1	BT-10-10	ANGLE SET HITCH PIN	2.0
2	BT-10-11	OUTER TUBE-DB ANGLE SET	25.6
3	BT-10-12	INNER TUBE-DB ANGLE SET	8.8
4	BT-10-13	DRAW BAR BTO SERIES 1 OFFSET	60.0
5	BT-10-14	CROSS MEMBER HITCH	102.0
6	BT-10-15	HITCH PIN BTO SERIES 1	5.0
7	OH-136	HOSE GUIDE	4.2
8	OH-138B	HOLD - JACK STAND	2.9
9	OL-133	TONGUE - PIN	3.1
10	OL-134	CLEVIS TYPE TONGUE	13.8
11	OL-135	SINGLE LIP TONGUE	11.0
12	CS1512-5	BOLT - 1" NC. X 5 1/2" LG. GR.-5	N/A
13	LN1	LOCK NUT - 1" NC., HEX	N/A
14	CP5163	COTTER PIN - 5/16" X 3" LG.	N/A
15	CS12412-5	BOLT - 1/2" NC. X 1/2" LG. GR.-5	N/A
16	LW12	LOCK WASHER - 1/2"	N/A
17	N12	NUT - 1/2" NC.	N/A
18	CP516212	COTTER PIN - 5/16" X 2 1/2" LG.	N/A
19	FW114	FLAT WASHER - 1 1/4"	N/A
20	VL-HJ	HITCH JACK - 2000 LBS.	N/A



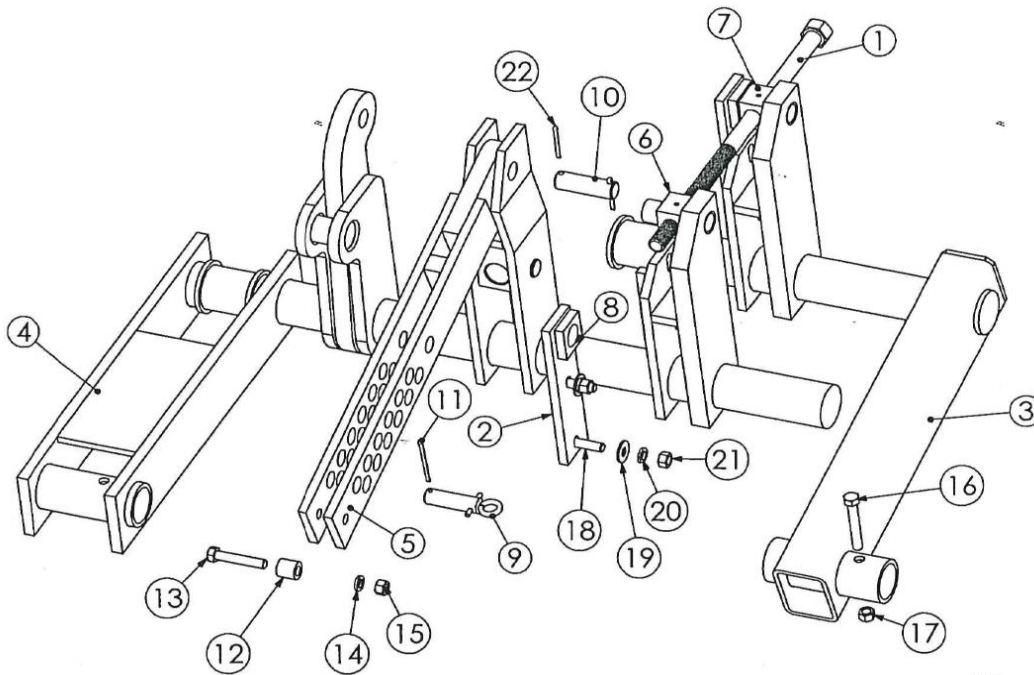
LEVELING ROD ASSEMBLY

REF #	PART #	DESCRIPTION	WT/LB.
1	BT-10-17	BODY - TURNBUCKLE	7.2
2	BT-10-27	HAMMER - LEVELING	17.0
3	BT-10-28	LINK - LEVELING	17.3
4	BT-10-29	ROCKER WELDMENT	13.9
5	BT-10-52	SPRING GUIDE - DOUBLE	1.9
6	BT-10-53	SPRING GUIDE - SINGLE	1.9
7	BT-10-149	LEVELING ROD	19.5
8	OH-150	SPRING LEVELING	5.8
9	BT-20-06-16	SWIVEL, LEVELINGROD	0.1
10	SN114	SLOTTED NUT - 1 1/4" NC., HEX	0.5
11	OH-140	ROD - TURNBUCKLE, LH. THD.	4.2
12	OH-143	ROD - TURNBUCKLE, RH. THD.	4.2
13	JN114	JAM NUT - 1 1/4" NC., HEX	N/A
14	CP14212	COTTER PIN - 1/4" X 2 1/2" LG.	N/A
15	OH-145	CROSS PIN	2.5
16	OH-148	ROCKER PIN	0.7
17	CS1312-5	BOLT - 1" NC. X 3 1/2" LG. GR.-5	N/A
18	LN1	LOCK NUT - 1"	N/A
19	CS34314-5	BOLT - 3/4" NC. X 3 1/4" LG. GR.-5	N/A
20	LW34	LOCK WASHER - 3/4"	N/A
21	N34	NUT - 3/4"	N/A
22	CS12214-5	BOLT - 3/8" NC. X 2 1/4" LG. GR.-5	N/A
23	LW12	LOCK WASHER - 3/8"	N/A
24	N12	NUT - 3/8" NC., HEX	N/A
25	CP14212	COTTER PIN - 1/4" X 2" LG.	N/A



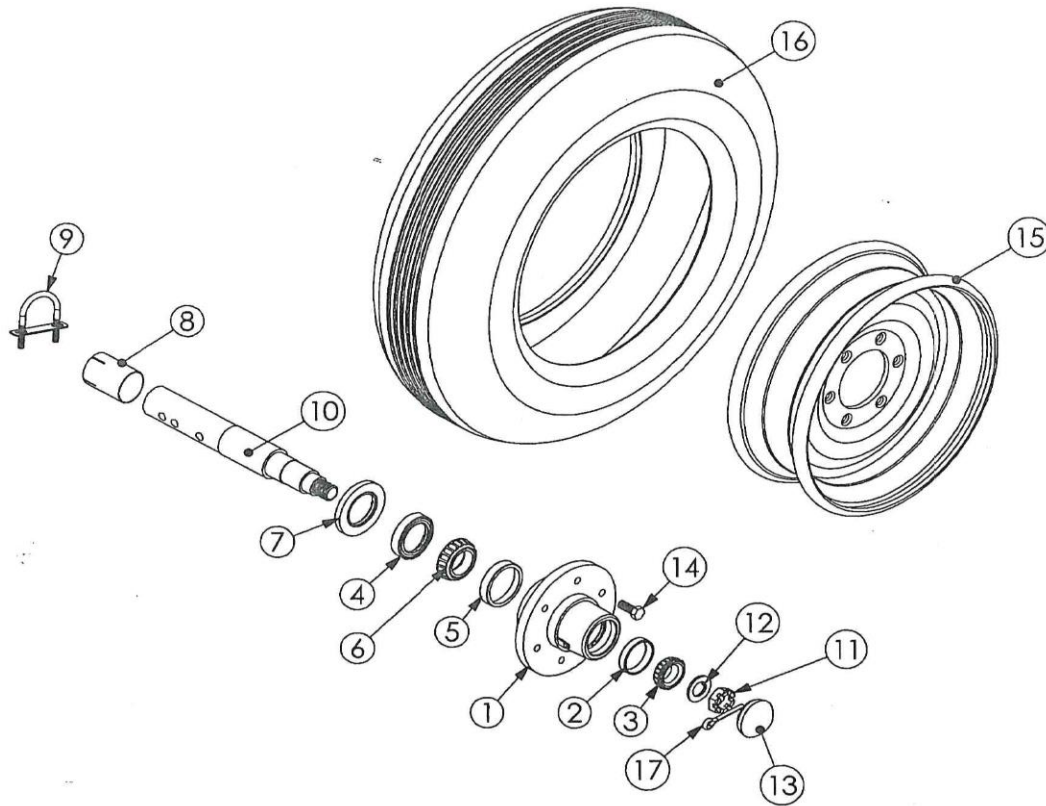
MAIN FRAME ASSEMBLY

REF #	PART #	DESCRIPTION	WT/LB.
1	BT-10-1	MAIN FRAME - BTO SERIES 1	635.0
2	JJ-16	AXLE - BLOCK, 2 1/2" DIA.	5.0
3	JJ-90	HYD. CYLINDER - 3" X 12" STROKE	30.0
4	RPO-136	U - BOLT - 1" DIA.	4.9
5	LW1	LOCK WASHER - 1"	0.1
6	N1	NUT - 1" NC. HEX	0.1
7	N114	NUT - 1 1/4" NC., HEX	0.6
8	CS13-5	BOLT - 1" NC. X 3" LG. GR-5	0.9
9	CS11412-5	BOLT - 1 1/4" NC. X 12" LG. GR-5	7.0
10	W1029	FLAT WASHER	0.3
11	CS346-5	BOLT - 3/4" NC. X 6" LG. GR-5	0.9
12	LW34	LOCK WASHER - 3/4"	0.1
13	N34	NUT - 3/4" NC., HEX	0.1



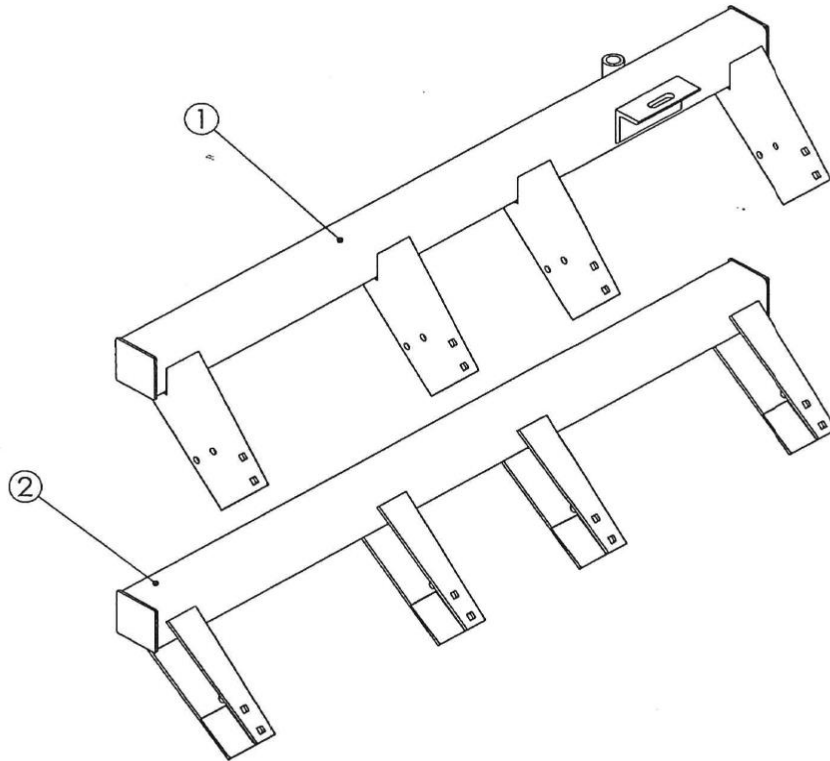
SPLIT AXLE ASSEMBLY

REF #	PART #	DESCRIPTION	WT/LB.
1	BT-10-01A	CRANK ASSY-SPLIT TYPE AXLE	6.0
2	BT-10-05	STRAP SWIVEL	5.3
3	BT-10-07	AXLE ASSY,-RH., SERIES 1 SHORT	75.0
4	BT-10-08	AXLE ASSY,-LH., SERIES 1 LONG	157.0
5	BT-10-63	SET BAR DEPTH CONTROL	23.5
6	BT-20-02	SWIVEL NUT - THREADED	1.6
7	BT-20-03	SWIVEL NUT- PLAIN	1.5
8	BT-20-06	BUSHING - CRANK SWIVEL	0.1
9	OH-126	SET BAR PIN	0.6
10	OH-148	PIN ROCKER	0.7
11	HP6	COTTER - HAIR PIN TYPE #6	N/A
12	CH-125-A	BUSHING - SPACER, SET BAR	N/A
13	CS12234-5	BOLT - 1/2" NC. X 2 3/4" LG. GR.-5	N/A
14	LW12	LOCK WASHER - SPRING - 1/2" NOM	N/A
15	N12	NUT - 1/2", HEX	N/A
16	CS12314-5	BOLT - 1/2" NC. X 3 1/4" LG. GR.-5	N/A
17	LN12	LOCK NUT - 1/2"	N/A
18	CS122-5	BOLT - 1/2" NC. X2" LG. GR.-5	N/A
19	FW12	FLAT WASHER - 1/2" NOM.	N/A
20	LW12	LOCK WASHER - SPRING 1/2" NOM.	N/A
21	N12	NUT - 1/2", HEX	N/A
22	CP142	COTTER - PIN - 1/4" X 2" LG.	N/A



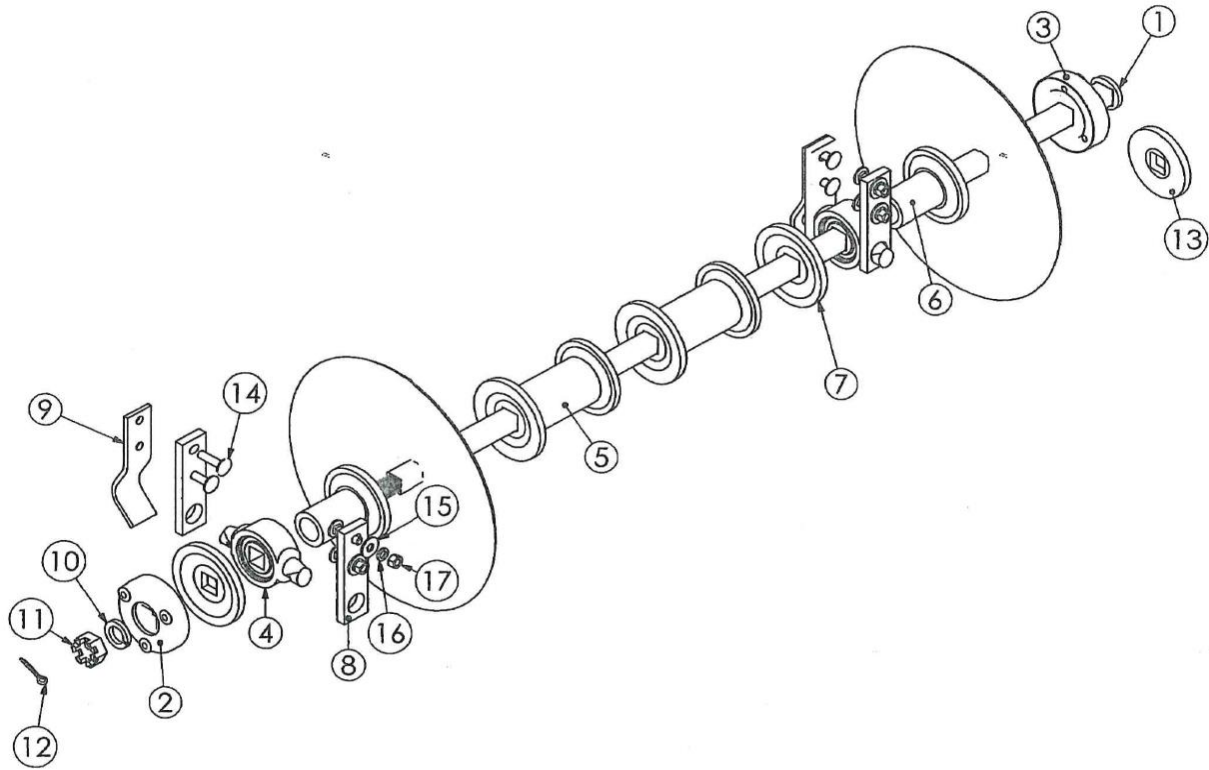
SPINDLE ASSEMBLY

REF #	PART #	DESCRIPTION	WT/LB.
1	DSH-302	HUB	10.0
2	DSH-303	BERING CUP, OUTER	0.1
3	DSH-304	BEARING CONE, OUTER	0.3
4	DSH-305	BEARING CUP, INNER	0.2
5	DSH-306	BEARING CONE, INNER	0.4
6	DSH-307	SEAL-INNER HUB	N/A
7	DSH-308	OUTER SEAL	0.1
8	DSH-309	TUBING SLEEVE	0.3
9	DSH-310	CLAMP ASSY	0.3
10	DSH-312-S	SLIP IN SPINDLE	9.0
11	DSH-313	SLOTTED NUT	0.1
12	DSH-314	SPINDLE WASHER	0.01
13	DSH-316	DUST CAP	0.2
14	DSH-318	LUG BOLT - (1/2" NF X 1" LG.)	0.1
15	JJ-19	WHEEL-15 X 6, 6 (1/2)	23.0
16	JJ-20	TIRE - 7.60-15, RIB 6 PLY	24.0
17	DSH-315	COTTER PIN - 1/8" X 1 1/2" LG.	N/A



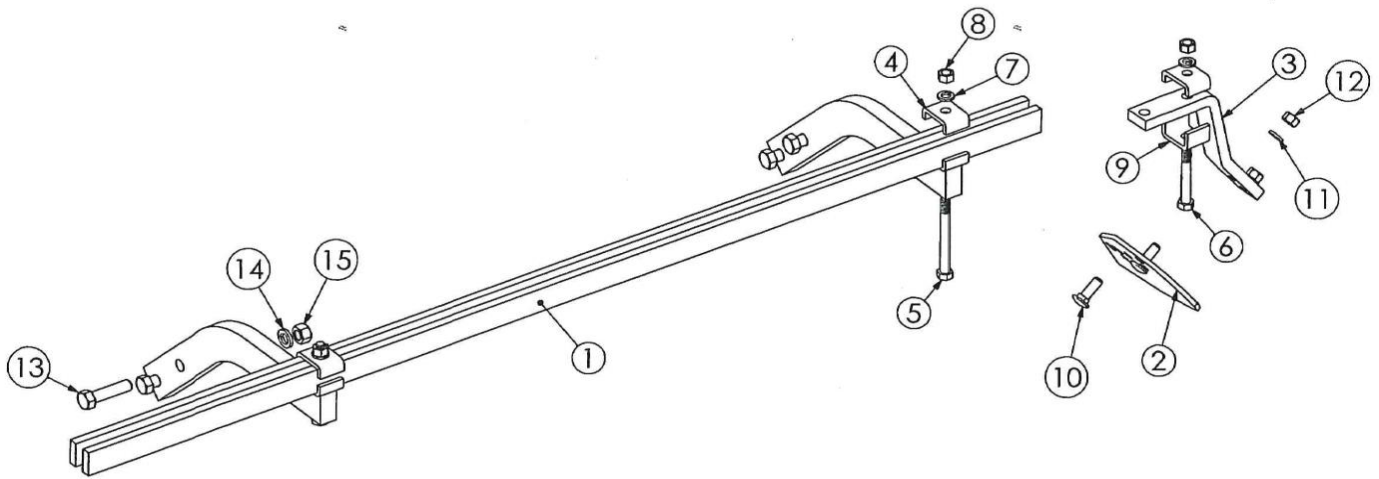
GANG FRAME

REF #	PART #	DESCRIPTION	WT/LB.
1	BT-10-16F	GANG FRAME - 8 BLADE, FRONT	202.0
	BT-10-18F	GANG FRAME - 9 BLADE, FRONT	218.0
	BT-10-20F	GANG FRAME - 10 BLADE, FRONT	234.0
	BT-10-22F	GANG FRAME - 11 BLADE, FRONT	250.0
	BT-10-24F	GANG FRAME - 12 BLADE, FRONT	267.0
	BT-10-26F	GANG FRAME - 13 BLADE, FRONT	284.0
	BT-10-28F	GANG FRAME - 14 BLADE, FRONT	301.0
2	BT-10-16R	GANG FRAME - 8 BLADE, REAR	192.0
	BT-10-18R	GANG FRAME - 9 BLADE, REAR	200.0
	BT-10-20R	GANG FRAME - 10 BLADE, REAR	225.0
	BT-10-22R	GANG FRAME - 11 BLADE, REAR	241.0
	BT-10-24R	GANG FRAME - 12 BLADE, REAR	258.0
	BT-10-26R	GANG FRAME - 13 BLADE, REAR	274.0
	BT-10-28R	GANG FRAME - 14 BLADE, REAR	290.0



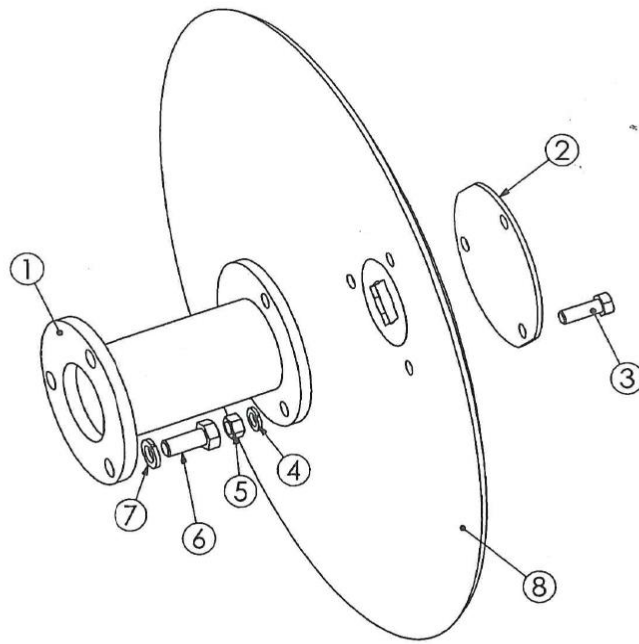
GANG ASSEMBLY

REF #	PART #	DESCRIPTION	WT/LB.
1	XGR-4	GANG ROD - 1 1/2" SQ., 4 BLADE,9"	20.0
	XGR-5	GANG ROD - 1 1/2" SQ., 5 BLADE,9"	26.0
	XGR-6	GANG ROD - 1 1/2" SQ., 6 BLADE,9"	32.0
	XGR-7	GANG ROD - 1 1/2" SQ., 7 BLADE,9"	38.0
	XGR-8EL	GANG ROD - 1 1/2" SQ., 8 BLADE,9"	44.2
	XGR-9EL	GANG ROD - 1 1/2" SQ., 9 BLADE,9"	50.2
2	JXE-18	EXT. WASHER -CVX 1 1/2" SQ	9.0
3	JXE-19	EXT. WASHER -CCV 1 2/2" SQ	8.0
4	RPO-129D-KIT	BRG. ASSY., 1 1/2" SQ. TYPE (DOMESTIC)	11.4
	RPO-129I-KIT	BRG. ASSY., 1 1/2" SQ. TYPE (IMPORT)	N/A
5	RPO-104	FULL SPOOL 1 1/2" SQ. 9"	19.4
6	RPO-113	HALF SPOOL - CVX, 1 1/2" SQ.	10.7
7	RPO-114	HALF SPOOL - CCV., 1 1/2" SQ.	5.8
8	RPO-117	MTH. STRAP-FLAT, BRG.	3.7
9	RPO-113	OFFSET BEARING GUARD	7.5
10	LW112	LOCK WASHER - 1 1/2"	0.2
11	SN112	SLOTTED NUT - 1 1/2" NC.	0.8
12	CP14	COTTER PIN	N/A
13	X98	END WASHER - UNIVERSAL 1 1/2" SQ	4.7
14	CB58212-5	BOLT - 5/8" NC. X 2 1/2" LG. GR-5	N/A
15	FW58	FLAT WASHER - 5/8"	N/A
16	LW58	LOCK WASHER - 5/8"	N/A
17	N58	NUT - 5/8" NC., HEX	N/A



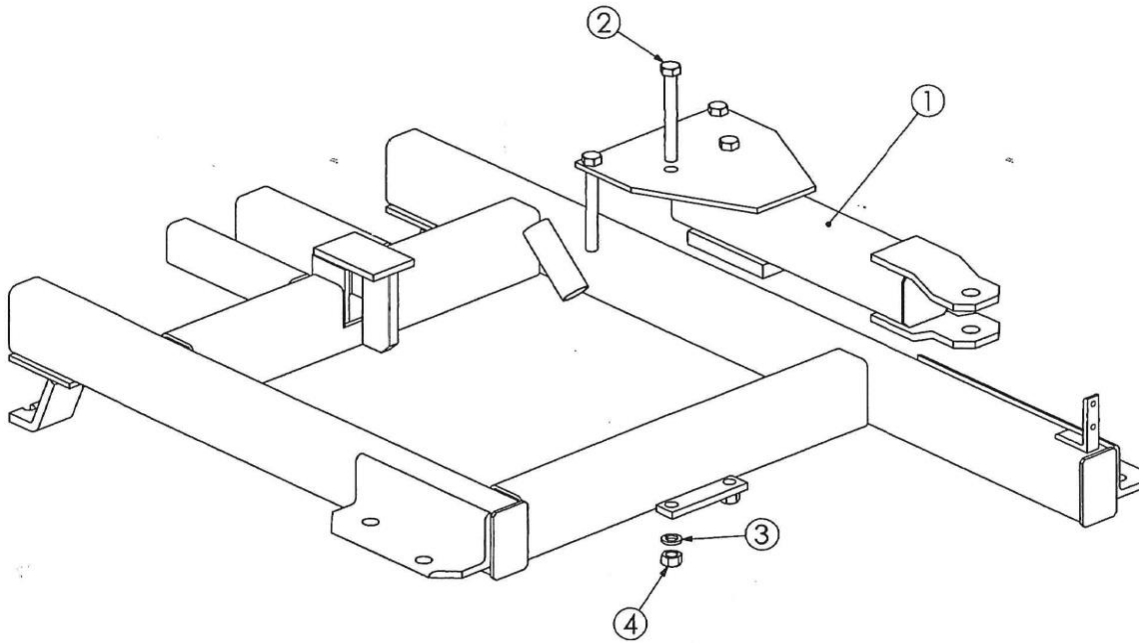
CLEANER BAR ASSEMBLY

REF #	PART #	DESCRIPTION	WT/LB.
1	BT-308	SCRAPER-BAR	13.4
	BT-309	SCRAPER-BAR	15.3
	BT-310	SCRAPER-BAR	17.2
	BT-311	SCRAPER-BAR	19.2
	BT-312	SCRAPER-BAR	21.2
	BT-313	SCRAPER-BAR	23.2
	BT-314	SCRAPER-BAR	24.2
2	RPO-115	SCRAPER-BLADE	2.5
3	RPO-116+CLIP	SCRAPER-ARM W/RPO-116-A CLIP	3.0
4	RPO-120	SCRAPER-CLIP ARM	0.4
5	CS125-5	BOLT - 1/2" NC. X 5" LG. GR.-5	0.3
6	CS12312-5	BOLT - 1/2" NC. X 3 1/2" LG. GR-5	0.3
7	LW12	LOCK WASHER - 1/2"	0.1
8	N12	NUT - 1/2" NC., HEX	0.1
9	RPO-116-A	CLIP-ONLY	N/A
10	CB12112-5	CARRIAGE BOLT - 1/2" NC, X 1 1/2" LG. GR.-5	N/A
11	LW12	LOCK WASHER - 1/2"	N/A
12	N12	NUT - 1/2" NC., HEX	N/A
13	CS58212-5	BOLT - 5/8" NC. X 2 1/2" LG. GR-5	N/A
14	LW58	LOCK WASHER - 5/8"	N/A
15	N58	NUT - 5/8" NC., HEX	N/A



EXTENSION SPOOL ASSEMBLY

REF #	PART #	DESCRIPTION	WT/LB.
1	JXE-16	EXT. SPOOL - (BLADE THROWS OUT) 9"	11.0
	JXE-17	EXT. SPOOL - (BLADE PULL IN) 9"	11.0
2	JXE-20	CAP-EXT. SPOOL, UNIVERSAL, 1 1/2"	3.0
3	CS12112-5	BOLT - 1/2" NC. X 1 1/2" LG. GR-5	0.1
4	LW12	Lock washer - 1/2"	0.1
5	N12	Nut - 1/2" NC., HEX	0.1
6	CS58112-5	BOLT - 5/8" NC. X 1 1/2" LG. GR-5	0.3
7	LW58	LOCK WASHER - 5/8"	0.1
8	EXB-24"	EXT. BLADE - 24" DIA., SOLID EDGE, 1 1/2" SQ.	25.0
	EXB-24N	EXT. BLADE - 24" DIA. NTCHED EDGE, 1 1/2" SQ.	23.0
	EXB-26"	EXT. BLADE - 26" DIA., SOLID EDGE, 1 1/2" SQ.	31.5



UTILITY HITCH ASSEMBLY

REF #	PART #	DESCRIPTION	WT/LB.
1	BT-10-UH-C	UTILITY HITCH CLEVIS	N/A
	BT-10-UH-S	UTILITY HITCH SINGLE LIP	N/A
2	CS34612-5	BOLT - 3/4" NC. X 6 1/2" LG. GR-5	N/A
3	LW34	LOCK WASHER - 3/4" NOM.	N/A
4	N34	NUT - 3/4" HEX	N/A



DOMRIES ENTERPRISES, INC.

12281 Road 29, Madera CA 93638 • (P) 559-673-9143 • (F) 559-673-4110

WARRANTY

Under this warranty Domries' obligation shall be limited to repairing or replacing, free of charge to the original purchaser, any defective part. Each part is subject to our assessment, and must show evidence of a manufacturing defect.

Product will be returned to Domries, routed through the dealer from whom the purchase was made. The cost of the repair or replacement shall not be higher than the purchase price of the product, excluding tax, shipping, and installation charges.

A claim for warranty must be made with a Domries Warranty Form with a work order number.

An authorized work order number is **REQUIRED** prior to any field/repair work to be done by Domries.

RETURN GOODS

Domries reserves the right of requiring the prepaid return of any parts claimed to be defective. However, **NO** parts shall be returned **without** Domries warranty form with a work order number. Goods shall be returned to such location as shall be designated by Domries.

Domries will at its discretion, either repair, replace, or freight outbound product from Domries factory. Domries will inspect all parts for defectiveness in materials and/or workmanship. Wear and tear that is determined to be defective, are subject to an adjustment based upon useful life.

REPAIR

Domries will not accept any charges other than its direct Dealer shop labor costs and parts required to repair such parts and/or workmanship at the Dealers place of business. The **WARRANTY** specifically excludes any charges for delivery, transportation, and/or shipping costs.

If the dealer is requested by the customer to travel or haul the machine to its shop or repair shop for the purpose of performing a warranty obligation or free inspection, it would be for the customer's convenience, and the cost of such a trip is to be paid by the customer. Any arrangement whereby the Dealer agrees to absorb all or a part of the cost is to be made **SOLELY** between the Dealer and the Customer (to be considered a courtesy to the customer by their Dealer).

LIMITED WARRANTY

Outside purchased equipment and accessories (not of Domries manufacture) are warranted only to the extent of the original manufacturer's warranty to Domries. Examples of limited items include, Hydraulic cylinders and hoses, Bearings, Disc Blades, Wheels, Tires, Tubes, and Seals.

NO WARRANTY

1. New product that has been subjected to operation in excess of recommended capacities, misused, negligence, lack of maintenance, an accident or have been ***altered/repared in any manner not authorized by Domries.***
2. Sharp turns while machine/cutting parts are in the ground void warranty, with the exception of a drag disc.

Domries shall in no event be responsible for any delay or any other consequential or indirect damage in connection with fulfilling any obligation under this WARRANTY.

Domries reserves the right to make change at any time in designs, materials and/or specifications of its product without becoming liable or obligated in any way to make similar changes in previously manufactured products.

This ***WARRANTY IS IN LIEU OF ALL OTHER WARRANTIES COVERING DOMRIES PRODUCTS*** and no other warranties expressed or implied are made or authorized by Domries Enterprises, Inc.

DEALER/SALESMAN: _____ **DATE:** _____

DOMRIES REP.: _____ **DATE:** _____