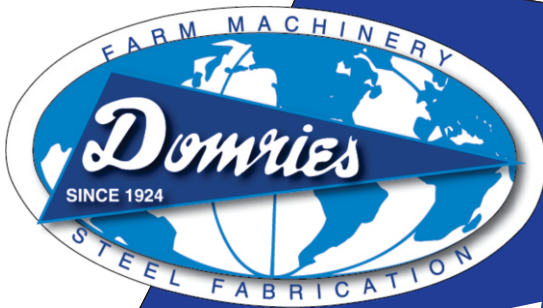


**BTO
SERIES II**



**WHEEL TYPE
OFFSET WHEEL DISC**

**A SUPER OFFSET
10'7" TO 15' 0"**



Low Profile Dual Tires

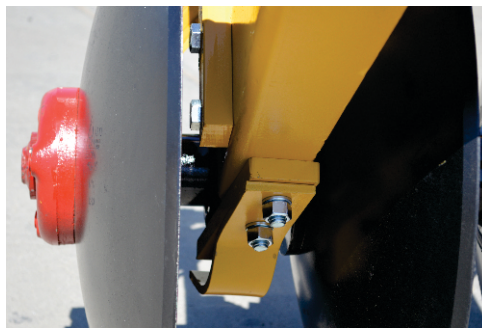
DOMRIES ENTERPRISES, INC
12281 Road 29
Madera, California 93638
Office (559) 673-9143 Fax (559) 673-4110
Visit our website @ www.domries.com



BTO II DISC FEATURES



DEPTH CONTROL



HEAVY DUTY WEAR PLATE AND
BLADE EXTENSION IS STANDARD



SINGLE TONGUE STANDARD
DOUBLE IS OPTIONAL

BTO II DISC MODEL

MODEL	A.S.A.E. WIDTH OF CUT	NO. OF BLADES	BLADE SIZE	BLADE EDGE		NO. OF BLADES		WT. LBS.
				FRONT	REAR	FRONT	REAR	
BTO-20-2840	10'7"	28	24	SM	SM	14	14	5019
BTO-20-2860	10'8"	28	26	SM	SM	14	14	5161
BTO-20-3040	11'4"	30	24	SM	SM	15	15	5122
BTO-20-3060	11'5"	30	26	SM	SM	15	15	5274
BTO-20-3240	12'1"	32	24	SM	SM	16	16	5225
BTO-20-3260	12'2"	32	26	SM	SM	16	16	5387
BTO-20-3440	12'10"	34	24	SM	SM	17	17	5435
BTO-20-3460	12'11"	34	26	SM	SM	17	17	5607
BTO-20-3640	13'6"	36	24	SM	SM	18	18	5538
BTO-20-3660	13'7"	36	26	SM	SM	18	18	5721
BTO-20-3840	14'3"	38	24	SM	SM	19	19	5641
BTO-20-3860	14'4"	38	26	SM	SM	19	19	5834

SEE PRICE SHEET FOR NOTCHED OR SMOOTH BLADE COMBINATIONS

DOMRIES ENTERPRISES, INC

12281 Road 29
Madera, California 93638
Office (559) 673-9143 Fax (559) 673-4110
Visit our website @ www.domries.com



Domries reserves the right to make changes and/or improvements in design and construction of parts and/or machines shown herein without notice or obligation